



B&P MANUFACTURING

Engineered Delivery Products

Material Handling and Delivery Products Catalog

XCELORATOR



Liberator



www.bpmfg.com



B&P MANUFACTURING

Engineered Delivery Products

OUR HISTORY

B&P Manufacturing has been engineering and building the highest quality material handling products since 1943 where we began as Brooks and Perkins. Since then our products and processes have seen dramatic changes in order to keep in step with rapid advances in the industries our products serve.

PURCHASING

Our streamlined process and inventory levels of both raw materials and completed goods are expertly maintained. Whether you need one handle or 5,000 hand trucks, we respond quickly to your needs.

ENGINEERING

By continuing to work with those who utilize our products, including drivers all over the country, we are able to engineer our products to be more ergonomically correct, reducing driver fatigue and risk of injury. Our products allow drivers to deliver more product, with increased efficiency. Quite simply, our goal is to solve our customers toughest delivery challenges with the highest quality products made by our dedicated team of men and women here in Northern Michigan.

SALES

Not sure what product best fits your needs? Do you have a customized concept? Let our experienced Sales Team guide you through the process to not only educate you about our offerings but also assist you in finding the right product for the task at hand.

CUSTOMER SERVICE

Customer service is a top priority! Our professional and knowledgeable Customer Service team is here to support and assist you with any questions that arise before, during and after you place your order and take delivery. Our goal is to provide you with prompt and effective solutions. Let us know how we can help.



www.bpmfg.com



bpsales@bpmfg.com



(800) 334-7141



8051 E. Boon Rd.
Cadillac, MI 49601

TABLE OF CONTENTS

Popular Configurations	4-5
Build A Liberator Hand Truck.....	6-14
Liberator Brake Types	15
Build A Liberator Convertible.....	16-17
Xcelerator	18-23
Powder Coat/American Pride	24
Liberator Snack/Bakery Trucks	25-26
Liberator Specialty Trucks.....	27-29
Build A Crusader Tubular Frame Truck	30-34
Build A Route Delivery Cart	35-36
Preconfigured Route Delivery Carts	37-38
Build A Platform Truck	39
Dock And Warehouse.....	40
Curb And Defender Walk Ramps	41-43
Custom Solutions	44-46
B&P 2+1 Warranty.....	47

B&P GRAND PROMISE

B&P Manufacturing truly cares about our customers, our products, our community, and our employees.

We hold ourselves accountable to a high level of standards in all aspects of our business from start to completion, including after sales service. Our team of professionals in Cadillac, MI is comprised of dedicated experts who bring unique skill sets in their respective fields. At B&P, we take great pride in designing, engineering, and building American made fabricated products of the highest level of quality and in value.

Companywide, we strive to be philanthropists within our local community, a trusted corporate partner, and conduct business with integrity. We believe strongly in moral and ethical best practices and at the end of the day, we are a company that ensures we do the right thing for our customers and our company!

Our Grand Promise is a declaration of assurance that as we grow and evolve, B&P Manufacturing will continue to build upon our strong foundation and relationships with our valued partners and community.

CERTIFICATIONS/COMPLIANCES/MEMBERSHIPS:

Helping you achieve your supplier diversity goals with the best quality standards.

ISO 9001:
2015 Registered
QMS



POPULAR CONFIGURATIONS

The Liberator sets the standard for Modular Aluminum Hand Trucks in performance, reliability, and reduced operation costs. Choose from the models shown or customize your own from components on pages 6-15.

STRAIGHT HAND TRUCKS

A11-B1-C6-D5-E1L-E60



A8-B1-C6-D6SS



A5-B1-C8-D6



BRAKE HAND TRUCKS

A11-B1-C6-D6SS-E1E-E60-BTC



A42-B3-C8-D5-E1EB-E46E-E47E-BDC



A5-B2-C6-D5-E1EB-E46E-E47E-BDC



CURVED HAND TRUCKS

A5-B5-C2-D6SS-E1E



A65-B5MK-C29-D16-E44E-NA



A10-B5-C5-D6-E1L-E9



Our exclusive, no nonsense two-year warranty on all Hand Trucks and full line of interchangeable parts sets another standard in our commitment to provide you with the best Hand Trucks and replacement parts available.

CONVERTIBLE HAND TRUCKS

A1-B80-CA2-D5



A13-B81-C6-D15



B70-CA1-D5



STANDARD CAPACITY HAND TRUCKS [S-SERIES]



S-500

S-502

S-503

Part #	Standard Capacity Hand Trucks	Weight	Capacity
S-500	A1-B10-C12-D16	17 lb	500 lb
S-502	A1-B10-C12-D15	19 lb	500 lb
S-503	A11-B10-C13-D5	25 lb	500 lb

FAQ for Liberator Hand Trucks:

Q If I don't like a product or it doesn't fit my needs, can I return it?

A Yes, normally with a 20% restock fee within 30 days of purchase. Return freight will be the customer's responsibility. Also, if the product is used, damaged or otherwise cannot be resold, we will issue only scrap value for the returned product. Please note, some products are non-returnable. Consult our customer service group for more information.

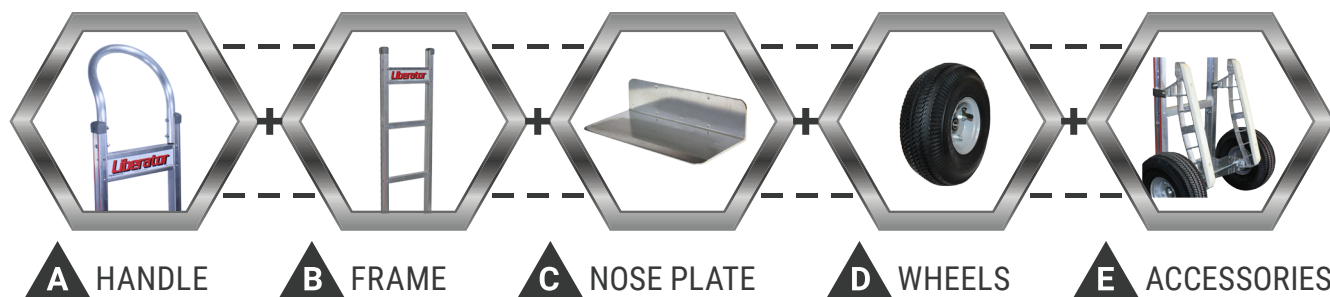
Q Does B&P have all the same hand truck components that competitors have?

A B&P offers almost everything our competitors offer and much more. We provide many more options to customize hand trucks specific to how you want them.

Q Do B&P Liberator parts work on other brands of hand trucks?

A Yes, they do interchange with most other brands of modular aluminum hand trucks.

BUILD A LIBERATOR HAND TRUCK



A - HANDLE



A1 A14 A37

Part #	Standard Loop	Overall Height
A1	Standard Loop	50"
A13	Standard Loop w/ Comfort Sleeve	50"
A2	Standard Loop w/ U-Brace	50"
A14	Standard Loop w/ U-Brace & Comfort Sleeve	50"
A37	Standard Loop, Square Top w/ Comfort Sleeve	50"



A11 A41 A19

Part #	Flared Double Grips	Overall Height
A11	Standard Double Grip w/ U-Brace	48"
A40	Square Loop w/ Flared Double Grips & Cross Member	52"
A41	Square Loop w/ Flared Double Grips & Cross Member	55"
A42	Square Loop w/ Flared Double Grips & 2 Cross Members	62"
A19	Square Loop w/ Flared Double Grips & No Cross Members	62"



A7 A8 A51

Part #	Straight Loop, Vertical Grip	Overall Height
A7	Straight Loop, Vertical Grip	52"
A10	Straight Loop, Vertical Grip for Curved Frames	52"
A8	Straight Loop, Vertical Grip at 52"	60"
A25	Straight Loop, Vertical Grip at 52" for Curved Frames	60"
A51	Straight Loop, Vertical Grip & 2 Curved Cross Members	60"
A9	Straight Loop, Vertical Grip at 52"	68"



A52 A67 A67M

Part #	Square Loop with Horizontal Grip		Overall Height
A52	Square Loop w/ Horizontal Grip, Brace & 2 Cross Members	⚠	62"
A67	Square Loop w/ Horizontal Grip, Brace, 2 Cross Members & Pull Back Loop	⚠	62"
A67M	Square Loop w/ Horizontal Grip, Brace, 2 Cross Members & 2 Pull Back Loops	⚠	62"



A12 A4 A65

Part #	Square Loop, Single Pin Grip		Overall Height
A12	Square Loop, Single Pin Grip	⚠	52"
A3	Square Loop, Single Pin Grip at 46"	⚠	52"
A4	Square Loop, Single Pin Grip at 46"	⚠	55"
A49	Square Loop w/ Curved Cross Member, Single Pin Grip at 46"	⊗ ⚠	55"
A5	Square Loop, Single Pin Grip at 46"	⚠	62"
A65	Square Loop w/ Loop Cross Member, Single Pin Grip at 46"	⚠	62"
A64	Square Loop w/ Straight & Loop Cross Member, Single Pin at 46"	⊗ ⚠	62"
A6	Square Loop, Single Pin Grip at 46"	⚠	68"



A47 A56S A69S

Part #	Square Loop with Double Vertical Grips		Overall Height
A47	Square Loop w/ Double Vertical Grips & Cross Member	⚠	55"
A31S	Square Loop w/ Double Vertical Grips	⚠	55"
A56S	Square Loop w/ Double Vertical Grips	⚠	62"
A57S	Square Loop w/ Double Vertical Grips, & 2 Cross Members	⚠	62"
A57SM*	Square Loop w/ Double Vertical Grips, 2 Cross Members & Top Pin	⚠	62"
A69S	Square Loop w/ Double Vertical Grips, 2 Cross Members & Pull Back Loop	⚠	62"
A66	Square Loop w/ Double Vertical Grips, Cross Member & Single Pin Grip at 46"	⚠	62"
A70S	Square Loop w/ Double Vertical Grips, 3 Cross Members & Pull Back Loop	⚠	68"

*Height is without pin



A15 A16

Part #	Flared Double Loop Grips		Overall Height
A15	Straight Loop w/ Flared Double Vertical Loop Grips	⊗	55"
A16	Straight Loop w/ Flared Double Vertical Loop Grips	⊗	60"

⊗ Not Compatible w/ Brakes ⚠ Heat Treated

BUILD A LIBERATOR HAND TRUCK

B - FRAME



Part #	Straight Back
B1	Standard Straight Back, No Strap
B2	Straight Back w/ 1 Vertical Strap
B3	Straight Back w/ 2 Vertical Straps
B10*	Straight Back, No Logo Channel & No Red Striping

* B10 frame has a **500 lb** capacity



Part #	Curved Back
B4	Curved Back w/ 1 Vertical Strap
B5	Curved Back, No Vertical Strap
B5K	Curved Back w/ Sliding Keg Hook
B5MK	Curved Back w/ Adjustable Sliding Keg Hook



Part #	Combination Back and Ergo
B6	Combination Back w/ 2 Straight & 1 Curved
B7	Combination Back w/ 1 Straight & 2 Curved
B17*	Straight Back, Ergo
B18*	Straight Back, Ergo w/ 1 Vertical Strap

* Ergo Frames add 6 $\frac{5}{16}$ " to overall hand truck height



Part #	Severe Duty
B1SD	Severe Duty, Straight Back, No Strap
B2SD	Severe Duty, Straight Back w/ 1 Vertical Strap
B17SD*	Severe Duty, Straight Back Ergo
B18SD*	Severe Duty, Straight Back Ergo w/ 1 Vertical Strap

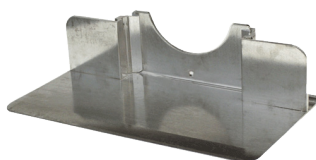
* Ergo frames add 6 $\frac{5}{16}$ " to overall hand truck height

Frames are 600 lb. capacity unless otherwise noted.

C - NOSE PLATE



C1

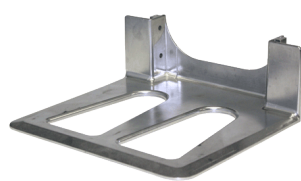


C20

Part #	Extruded Recessed Heel	Width x Depth
C1	Recessed Heel w/ Cutouts, Extruded Aluminum	14" x 7.5"
C19	Recessed Heel, Extruded Aluminum	14" x 7.5"
C7	Recessed Heel w/ Cutouts, Extruded Aluminum	14" x 10.5"
C2	Recessed Heel w/ Cutouts, Extruded Aluminum	18" x 7.5"
C20	Recessed Heel, Extruded Aluminum	18" x 7.5"
C15	Recessed Heel w/ Cutouts, Extruded Aluminum	18" x 10.5"



CA1



CA3

Part #	Cast Recessed Heel	Width x Depth
CA1*	Recessed Heel w/ Cutouts, Cast	14" x 7.5"
CA2*	Recessed Heel w/ Cutouts, Cast	18" x 7.5"
CA3*	Recessed Heel w/ Cutouts, Cast	14" x 12"

**All cast aluminum nose plates have a 500 lb capacity and 1 year warranty*



C16



C13

Part #	Extruded Front Mount	Width x Depth
C16	Front Mount, Extruded Aluminum	14" x 7.5"
C12	Front Mount w/ Cutouts, Extruded Aluminum	14" x 7.5"
C4*	Front Mount, Extruded Aluminum	14" x 9"
C8	Front Mount, Extruded Aluminum	16" x 12"
C17	Front Mount, Extruded Aluminum	18" x 7.5"
C13	Front Mount w/ Cutouts, Extruded Aluminum	18" x 7.5"
C6*	Front Mount, Extruded Aluminum	18" x 9"
C26	Front Mount w/ Cutouts, Extruded Aluminum	18" x 9"
C14	Front Mount, Extruded Aluminum	18" x 12"
C10*	Front Mount, Extruded Aluminum	20" x 9"
C9*	Front Mount, Extruded Aluminum	20" x 12"

** Available w/ countersunk nose plate bolts*



C26



C9



C3



C5

Part #	Extruded Rear Mount	Width x Depth
C3	Rear Mount, Extruded Aluminum	14" x 7.5"
C5	Rear Mount, Extruded Aluminum	18" x 7.5"



C29



C22

Part #	Steel Recessed or Front Mount	Width x Depth
C29	Recessed Mount, Steel	14" x 7.5"
C28	Recessed Mount, Steel	18" x 7.5"
C21	Front Mount, Steel	14" x 9"
C22	Front Mount, Steel	18" x 9"

Nose Plates are 600 lb. capacity unless otherwise noted.

BUILD A LIBERATOR HAND TRUCK

D - WHEELS



Part #	Pneumatic Wheel	Diameter x Width	Weight
D5	4 Ply Pneumatic, 3 pc. Steel Hub, Precision Bearings	10" x 3.5"	4.4 lb
D5F	D5 Foam Filled - Can't Go Flat	10" x 3.5"	7.0 lb
D5S	D5 w/ Slime Sealant	10" x 3.5"	5.0 lb

Capacity: 350 lb per wheel

Recommended uses:

- ▶ Outdoor surfaces such as gravel, grass & sand
- ▶ Inclement conditions such as snow, slush or mud
- ▶ Rough or uneven surfaces
- ▶ Applications requiring superior shock absorption

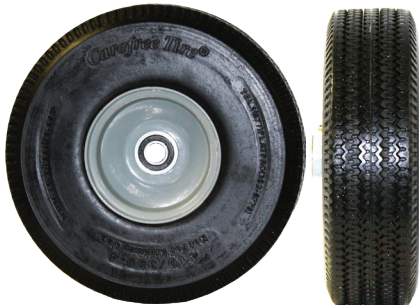


Part #	Pneumatic Wheel	Diameter x Width	Weight
D5G	D5 in Gray Color, Non-Marking	10" x 3.5"	4.4 lb

Capacity: 350 lb per wheel

Recommended uses:

- ▶ Outdoor surfaces such as gravel, grass & sand
- ▶ Inclement conditions such as snow, slush or mud
- ▶ Rough or uneven surfaces
- ▶ Applications requiring superior shock absorption



Part #	Carefree® Wheel	Diameter x Width	Weight
D6	No Flat Solid Foam, Non-Marking	10" x 3"	4.2 lb

Capacity: 350 lb per wheel

Recommended uses:

- ▶ Outdoor surfaces such as gravel, grass & sand
- ▶ Inclement conditions such as snow, slush or mud
- ▶ Rough or uneven surfaces



Part #	Pneumatic Wheel	Diameter x Width	Weight
D9	Pneumatic, 2 pc. Steel Hub	8" x 2.5"	2.9 lb

Capacity: 300 lb per wheel

Recommended uses:

- ▶ Smooth/semi smooth, hard surface
- ▶ General purpose



Part #	Carefree® Wheel	Diameter x Width	Weight
D6SS	Poly Hub, Non-Marking	10" x 3"	3.1 lb

Capacity: 350 lb per wheel

Recommended uses:

- ▶ Outdoor surfaces such as gravel, grass & sand
- ▶ Inclement conditions such as snow, slush or mud
- ▶ Rough or uneven surfaces



Part #	Balloon Cushion Wheel	Diameter x Width	Weight
D15	Poly Hub, Precision Bearings, Dark Gray, Non-Marking	10" x 2.125"	2.3 lb
D16	Poly Hub, Precision Bearings, Dark Gray, Non-Marking	8" x 2.125"	1.6 lb

Capacity: 350 lb per wheel

Recommended uses:

- ▶ Smooth/semi smooth, hard surfaces
- ▶ General purpose
- ▶ City deliveries - side walk & concrete
- ▶ Delicate floor, tile & carpet



Part #	Performance TPR Wheel	Diameter x Width	Weight
D1	High Performance, in Gray Color, Non-Marking	8" x 2"	2 lb

Capacity: 500 lb per wheel

Recommended uses:

- ▶ Smooth/semi smooth, hard surfaces
- ▶ General purpose



Part #	Rubber Wheel Description	Diameter x Width	Weight
D12	Mold on Rubber on Aluminum, Offset Hub	8" x 1.625"	2.1 lb

Capacity: 250 lb per wheel

Recommended uses:

- ▶ Smooth/semi smooth, hard surfaces
- ▶ General purpose

Safety Note: Never exceed rated hand truck capacity (600 lb, unless otherwise noted).

BUILD A LIBERATOR HAND TRUCK

E - ACCESSORIES



E62S E68SL
(Shown with A13 handle)

Part #	Tubular Frame Extension	Overall Height
E62S	Tubular Frame Extension w/ 2 Straps	62"
E62SL	Tubular Frame Extension w/ 2 Straps, & 1 Diagonal Loop	62"
E68S	Tubular Frame Extension w/ 2 Straps	68"
E68SL	Tubular Frame Extension w/ 2 Straps, & 1 Diagonal Loop	68"

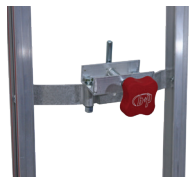
Fits A1, A2, A11, A13, A14, A37 handles, and some competitors hand trucks



E45 E52 E60 E11
(Shown with A1 handle)

Part #	Extruded Frame Extension	Overall Height
E45	U-Brace, Extruded Frame Extension	45"
E52	Extruded Frame Extension	52"
E55	Extruded Frame Extension	55"
E60	Extruded Frame Extension	60"
E68	Extruded Frame Extension	68"
E11	Frame Extension Foam Sleeve	N/A

Fits A1, A2, A11, A13, A14, A37 handles, and some competitors hand trucks



Part #	Keg Hook
E9*	Keg Hook for Sankey Style 1/2 Barrel

**For curved back frames only*



Part #	Frame Wings	Length x Width
E30	Standard Frame Wings	34" x 2"
E31	Standard Frame Wings, Large	45" x 2"
E30SD	Severe Duty Frame Wings	34" x 2"
E30ESD	"Ergo" Severe Duty Frame Wings, Large	40.5" x 2"



Part #	Pull Bar	Diameter
E29	Pull Bar w/ Red Plastic Sleeve for E1L, E1E Stair Climbers	.63"

 Heat Treated



E1E

E1L

Part #	Extruded Stair Climbers		Angle
E1E	Extruded Aluminum Ergo Stair Climbers		10°
E1L	Extruded Aluminum Stair Climbers w/ Replaceable Wear Strips		18°



Part #	Cast Stair Climbers	
E1C*	Cast Aluminum Stair Climbers	

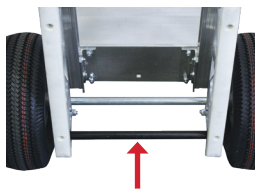
*1 Year Warranty



Part #	Appliance Stair Climbers	
E72	30" Skids, Appliance Style w/ Plastic Wear Strip	



Part #	Aluminum Kick Bar	Diameter
E13	Aluminum Kick Bar for E1L Stair Climbers w/ 10" Wheels	1.49"



Part #	Steel Kick Bar	Diameter
E46	Steel Kick Bar for E1L Stair Climbers w/ 10" Wheels	.63"
E26	Steel Kick Bar for E1L Stair Climbers w/ 8" Wheels	.63"
E46E	Steel Kick Bar for E1E "Ergo" Stair Climbers	.63"



8218-001



8218-002

Part #	Accessory Bag	Length x Width x Depth
8218-001	Hand Truck Accessory Bag	18" x 12" x 2"
8218-002	Hand Truck Accessory Bag	18" x 12" x 3"

BUILD A LIBERATOR HAND TRUCK

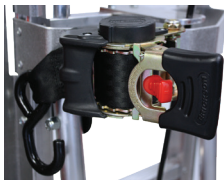
E - ACCESSORIES CONTINUED



Part #	Pull Back Bar
E47	Pull Back Bar for E1L Stair Climbers
E47E	Pull Back Bar for E1E "Ergo" Stair Climbers



Part #	Wheel Guards	Length x Width
E8	Wheel Guards	7.38" x 2.5"
E8L	Wheel Guards	12" x 4"
E8D	Wheel Guards for Disc Brakes	12" x 4.38"

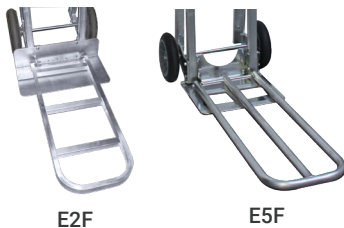


Part #	Ratchet Strap	Length x Width
E73	9' Retractable Ratchet Strap	9' x 2"
E75	13' Retractable Ratchet Strap	13' x 2"



Part #	Fourth Wheel
E37L*	Fourth Wheel Attachment, w/ Latch

* Not compatible with stair climbers or convertible hand trucks



E2F

E5F

Part #	Folding Noses	Capacity
E2F or E2R	Full Channel Extruded Folding Nose, 20"	300 lb
E3F or E3R	Full Channel Extruded, Folding Nose, 30"	300 lb
E4F or E4R	Tubular Folding Nose, 44"	110 lb
E5F or E5R	Tubular Folding Nose, 36"	110 lb
E6F or E6R	Tubular Folding Nose, 30"	110 lb
E10F or E10R	Tubular Folding Nose, 34"	110 lb

Order "F" for use with front mount nose plates

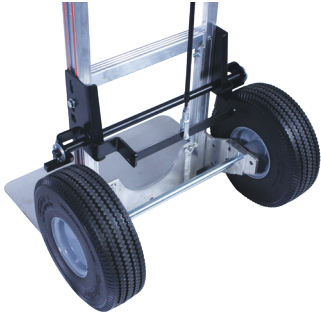
Order "R" for use with recessed heel or rear mount nose plates



E44E

Part #	Narrow Aisle Configuration (15.25" Wheel Base)
NA	Narrow Aisle Brackets
E44E	Narrow Aisle Stair Climbers

LIBERATOR BRAKE TYPES



Part #	Tread Brakes
BTC	Brakes, Tread w/ Cable Lever
BTT	Brakes, Tread w/ T-Rod

Add -P/N from the table above to the end of your custom Liberator part number to add tread brakes to your hand truck.

Recommended when you need light weight load control.



Part #	Disc Brakes
BDC	Brakes, Double Disc w/ Cable Lever
BDT	Brakes, Double Disc w/ T-Rod

Add -P/N from the table above to the end of your custom Liberator part number to add disc brakes to your hand truck.

Recommended when you need total, safe stopping power.

Only available w/ D5, D5G, D5S, D5F, D6 and D6SS.



Part #	Spare Disc Brake Wheels	Diameter x Width	Weight
2006-156	D5G, Spare Wheel Assy, 3/4" Disc Brake	10" x 3.5"	4.4 lb
2006-157	D5, Spare Wheel Assy, 3/4" Disc Brake	10" x 3.5"	4.4 lb
2006-167	D5F, Spare Wheel Assy, 3/4" Disc Brake	10" x 3.5"	7.0 lb
2006-158	D6, Spare Wheel Assy, 3/4" Disc Brake	10" x 3"	4.2 lb

Capacity: 350 lb per wheel

Lower cost alternative to replacing entire wheel assembly.

Brake Lever Orientation

Lever styles and orientation depends on the combination of handle and activator mechanism. No matter which you choose from, know you are getting the best in ergonomics!



BUILD A LIBERATOR CONVERTIBLE

A-B - HANDLE & FRAME



A1-B81
A13-B81



A1-B80W
A13-B80W

Part #	Senior Convertible Handle and Frame	Capacity (Up/ Down)
A1-B80	Standard Loop & Sr. Convertible Frame w/ 3 Cross Members	500/1000 lb
A13-B80	Standard Loop w/ Comfort Sleeve & Sr. Convertible Frame w/ 3 Cross Members	500/1000 lb
A1-B81	Standard Loop & Sr. Convertible Frame w/ 5 Cross Members	600/1200 lb
A13-B81	Standard Loop w/ Comfort Sleeve & Sr. Convertible Frame w/ 5 Cross Members	600/1200 lb
A1-B88F	Standard Loop & Sr. Convertible Frame w/ 5 Cross Members and Center Strap	600/1200 lb
A13-B88F	Standard Loop w/ Comfort Sleeve & Sr. Convertible Frame w/ 5 Cross Members and Center Strap	600/1200 lb



B70



B75

Part #	Junior Convertible Handle and Frame	Capacity (Up/ Down)
B70	Junior Convertible Frame w/ 4 Cross Members	600/1200 lb
B75	Junior Convertible Frame w/ 2 Cross Members	500/1000 lb

C - NOSE PLATE



CA2



C6

Part #	Nose Plates	Width x Depth
CA1*	Recessed Heel w/ Cutouts, Cast	14" x 7.5"
CA2*	Recessed Heel w/ Cutouts, Cast	18" x 7.5"
C2	Recessed Heel w/ Cutouts, Extruded Aluminum	18" x 7.5"
C6	Front Mount, Extruded Aluminum	18" x 9"

* All cast aluminum nose plates have a **500 lb capacity** and **1 year warranty**

D - WHEELS



Part #	Wheels	Diameter x Width	Weight
D5	4 Ply Pneumatic, 3 pc. Steel Hub, Precision Bearings	10" x 3.5"	4.4 lb
D6	No Flat Solid Foam, Hub, Precision Bearings, Non-Marking	10" x 3"	4.2 lb
D6SS	Poly Hub, Precision Bearings, Non-Marking	10" x 3"	3.1 lb
D15	Poly Hub, Precision Bearings, Dark Gray	10" x 2.125"	2.3 lb

E - ACCESSORIES



E2F



E5F

Part #	Folding Noses	Capacity
E2F or E2R	Full Channel Extruded Folding Nose, 20"	300 lb
E3F or E3R	Full Channel Extruded, Folding Nose, 30"	300 lb
E5F or E5R	Tubular Folding Nose, 36"	110 lb
E6F or E6R	Tubular Folding Nose, 30"	110 lb

Order "F" for use with front mount nose plates.
Order "R" for use with recessed heel or rear mount nose plates.



E32



E32J

Part #	Wings
E32	Frame Wings, Senior Only, 44.25" x 2.5", 17" Overall Width
E32J	Frame Wings, Junior Only, 31.75" x 2", 16" Overall Width



E87



E23L



E25LP

Part #	Senior Decks
E23L	Solid Deck, 12", Senior, Snap On
E25L	Solid Deck, 12", Senior, Permanent
E50	Solid Deck, 18", Senior, Snap On
E49	Solid Deck, 18", Senior, Permanent
E25LP	Perforated Deck, 12", Senior, Permanent
E49P	Perforated Deck, 18", Senior, Permanent
E87	Senior Convertible Pan Kit

Part #	Junior Decks
E22L	Solid Deck, 12", Junior, Snap On
E24L	Solid Deck, 12", Junior, Permanent
E50J	Solid Deck, 18", Junior, Snap On
E24LP	Perforated Deck, 12", Junior, Permanent



SJR-2



SSR-2



SSR-5

Part #	Standard Capacity Convertible Hand Trucks	Weight	Capacity*
SSR	A1-B80-C17-D5	46 lb	500 lb/1,000 lb
SSR-2	A1-B80-CA2-D5	46 lb	500 lb/1,000 lb
SSR-3	A1-B80-CA2-D6SS	44 lb	500 lb/1,000 lb
SSR-4	A1-B80-C6-D5	46 lb	500 lb/1,000 lb
SSR-5	A1-B80-C6-D6SS	46 lb	500 lb/1,000 lb
SJR	B75-C17-D5	42 lb	500 lb/1,000 lb
SJR-2	B75-CA2-D5	42 lb	500 lb/1,000 lb
SJR-3	B75-CA2-D6SS	42 lb	500 lb/1,000 lb

* 500 lb Capacity in upright position. 1,000 lb Capacity in down position.

NEW!



Putting safety at the forefront, your drivers can concentrate on maximum output, with less effort. The NEW XCELORATOR hand truck seamlessly transitions from manual or physical push/pull actions to powered with ease.

Drivers can simply go from powered to unpowered with the simple use of a throttle.

KEY FEATURES & BENEFITS:

- ▶ Use with heavy loads on inclines like loading dock ramps, sidewalk aprons, curbs, and to reduce fatigue on long runs.
- ▶ Customizable powered hand truck options allow for various height drivers and different types of uses.
- ▶ The battery is easily interchangeable and can be charged in the cab or at the warehouse.
- ▶ The truck is light in weight and has a very low center of gravity centered around the wheel axle.
- ▶ Very low rolling resistance even with a dead battery, or without a battery entirely, hand truck is completely operable.
- ▶ Power driven assist wheels will not interfere with driver's legs or feet.
- ▶ Many modular B&P parts and components can be used to build to suit.
- ▶ Motor kit adds minimal weight (less than 17 lb. to its standard counterpart).



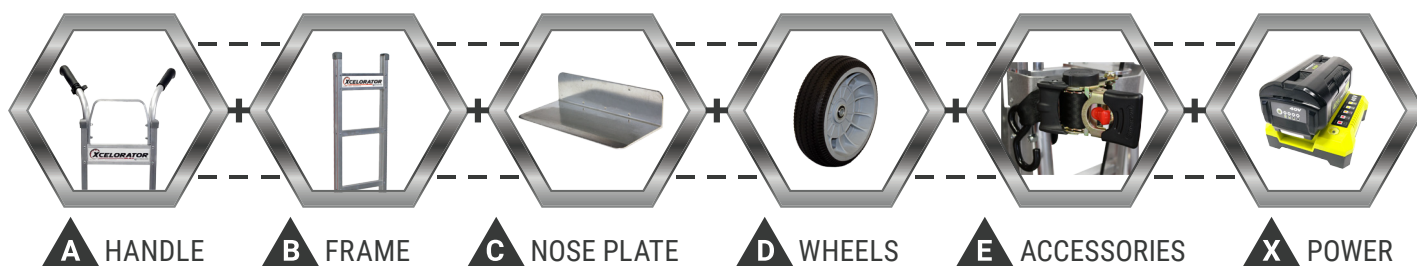
A11X-B1X-C6-D6SS-PWR



A9X-B1X-C6-D6SS-BTT-PWR

When ordering Xcelerator, use PWR for Standard model or BTT-PWR for Tread Brake Truck model.

Power assist, for a little or a lot of extra help... only when you need it!



A - HANDLE



Part #	Standard Loop (Standard or BTT)	Overall Height
A37X	Squared Loop, w/ Throttle Guard	50"



Part #	Flared Double Grips (Standard or BTT)	Overall Height
A11X	Flared Double Grip w/ U-Brace, Grip Height 48"	48"
A40X	Squared Loop, Flared Double Grips at 48", 1 Crossmember	52"
A42X	Squared Loop, Flared Double Grips at 48", 2 Crossmembers	62"



Part #	Straight Loop, Vertical Grip (Standard Only)	Overall Height
A7X	Straight Loop, Vertical Grip at 52"	52"
A10X	Straight Loop, Vertical Grip at 52" for B4/B5 Frame	52"
A8X	Straight Loop, Vertical Grip at 52"	60"
A25X	Straight Loop, Vertical Grip at 52" for B4/B5 Frame	60"
A9X	Straight Loop, Vertical Grip at 52"	68"

Part #	Straight Loop, Vertical Grip (BTT Only)	Overall Height
A7XT	Straight Loop, Vertical Grip at 52" w/ Brake Handle Bracket	52"
A8XT	Straight Loop, Vertical Grip at 52" w/ Brake Handle Bracket	60"
A9XT	Straight Loop, Vertical Grip at 52" w/ Brake Handle Bracket	68"



Part #	Square Loop, Single Pin Grip (Standard or BTT)	Overall Height
A12X	Squared Loop, Single Pin Grip at 52"	52"
A3X	Squared Loop, Single Pin Grip at 46"	52"
A4X	Squared Loop, Single Pin Grip at 46"	55"
A5X	Squared Loop, Single Pin Grip at 46"	62"
A6X	Squared Loop, Single Pin Grip at 46"	68"

Heat Treated BTT = Tread Brake Truck

B - FRAME



B1X

B2X

B3X

B10X

Part #	Straight Back (Standard or BTT)	
B1X	Standard Straight Back, No Strap	P
B2X	Straight Back w/ 1 Vertical Strap	P
B3X	Straight Back w/ 2 Vertical Straps	P
B10X*	Straight Back, No Logo Channel & No Red Striping	P

* B10X frame has a **500 lb** capacity



B4

B5

B5K

B5MK

Part #	Curved Back (Standard or BTT)
B4	Curved Back w/ 1 Vertical Strap
B5	Curved Back, No Vertical Strap

Part #	Curved Back (Standard Only)
B5K	Curved Back w/ Sliding Keg Hook
B5MK	Curved Back w/ Mini Keg Hook



B6X

B7X

B17X

B18X

Part #	Combination Back and Ergo (Standard Only)	
B6X	Top 2 Crossbars Straight, Bottom Crossbar Curved	
B7X	Top Crossbar Straight, 2 Bottom Crossbars Curved	
B17X*	Straight Back, Tall Ergo	P
B18X*	Straight Back, Tall Ergo w/ 1 Vertical Strap	P

* Ergo Frames add 6 5/16" to overall hand truck height

Part #	Combination Back and Ergo (BTT Only)
B6XD	Top 2 Crossbars Straight, Bottom Crossbar Curved
B7XD	Top Crossbar Straight, 2 Bottom Crossbars Curved

C - NOSE PLATE



C1

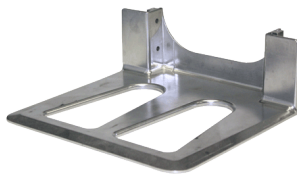


C20

Part #	Extruded Recessed Heel (Standard or BTT)	Width x Depth
C1	Recessed Heel w/ Cutouts, Extruded Aluminum	14" x 7.5"
C19	Recessed Heel, Extruded Aluminum	14" x 7.5"
C7	Recessed Heel w/ Cutouts, Extruded Aluminum	14" x 10.5"
C2	Recessed Heel w/ Cutouts, Extruded Aluminum	18" x 7.5"
C20	Recessed Heel, Extruded Aluminum	18" x 7.5"
C15	Recessed Heel w/ Cutouts, Extruded Aluminum	18" x 10.5"



CA1



CA3

Part #	Cast Recessed Heel (Standard or BTT)	Width x Depth
CA1*	Recessed Heel w/ Cutouts, Cast	14" x 7.5"
CA2*	Recessed Heel w/ Cutouts, Cast	18" x 7.5"
CA3*	Recessed Heel w/ Cutouts, Cast	14" x 12"

** All cast aluminum nose plates have a 500 lb capacity and 1 year warranty*



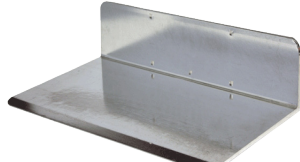
C16



C13



C26



C9

Part #	Extruded Front Mount (Standard or BTT)	Width x Depth
C16	Front Mount, Extruded Aluminum	14" x 7.5"
C12	Front Mount w/ Cutouts, Extruded Aluminum	14" x 7.5"
C4	Front Mount, Extruded Aluminum	14" x 9"
C8	Front Mount, Extruded Aluminum	16" x 12"
C17	Front Mount, Extruded Aluminum	18" x 7.5"
C13	Front Mount w/ Cutouts, Extruded Aluminum	18" x 7.5"
C6	Front Mount, Extruded Aluminum	18" x 9"
C6C	C6 w/ Countersunk Holes	18" x 9"
C26	Front Mount w/ Cutouts, Extruded Aluminum	18" x 9"
C14	Front Mount, Extruded Aluminum	18" x 12"
C10	Front Mount, Extruded Aluminum	20" x 9"
C10C	C10 w/ Countersunk Holes	20" x 9"
C9	Front Mount, Extruded Aluminum	20" x 12"
C9C	C9 w/ Countersunk Holes	14" x 7.5"
C32	Solid Front Mount, Extruded Aluminum	32" x 12"

Nose Plates are 600 lb. capacity unless otherwise noted. BTT = Tread Brake Truck

C - NOSE PLATE CONTINUED



C37C



C37CC

Part #	Extruded Front Mount (Standard or BTT)	Width x Depth
C37	Solid Front Mount, Extruded Aluminum	14" x 5.5"
C37C	C37 w/ Countersunk Holes	14" x 5.5"
C37CC	C37 w/ Countersunk Holes and Carpeted Back	14" x 5.5"
C38	Solid Front Mount, Extruded Aluminum	16" x 5.5"
C38C	C38 w/ Countersunk Holes	16" x 5.5"
C38CC	C38 w/ Countersunk Holes and Carpeted Back	16" x 5.5"
C39	Solid Front Mount, Extruded Aluminum	18" x 5.5"
C39C	C39 with Countersunk Holes	18" x 5.5"
C39CC	C39 w/ Countersunk Holes and Carpeted Back	18" x 5.5"
C41	Solid Front Mount, Extruded Aluminum	20" x 5.5"
C41C	Solid Front Mount, Extruded Aluminum	20" x 5.5"
C41CC	C41 w/ Countersunk Holes	20" x 5.5"
C45	Solid Front Mount, Extruded Aluminum	14" x 12"



C29



C22

Part #	Steel Recessed or Front Mount (Standard or BTT)	Width x Depth
C29	Recessed Mount, Steel	14" x 7.5"
C28	Recessed Mount, Steel	18" x 7.5"
C21	Front Mount, Steel	14" x 9"
C22	Front Mount, Steel	18" x 9"

D - WHEELS



D5



D5G



D6SS

Part #	Wheels (Standard or BTT)	Diameter x Width	Weight
D5	4 Ply Pneumatic, 3 pc. Steel Hub, Precision Bearings	10" x 3.5"	4.4 lb
D5G	D5 in Gray Color, Non-Marking	10" x 3.5"	4.4 lb
D6SS	Carefree®, Poly Hub, Precision Bearings, Non-Marking	10" x 3"	3.1 lb

Nose Plates are 600 lb. capacity unless otherwise noted. BTT = Tread Brake Truck

E - ACCESSORIES



Part #	Extruded Frame Extension (Standard or BTT)	Overall Height
E45	Fixed Wings w/ Cutout for use w/ for Flared Handles	45"
E52	Extruded Frame Extension	52"
E55	Extruded Frame Extension	55"
E60	Extruded Frame Extension	60"
E68	Extruded Frame Extension	68"
E11	Frame Extension Foam Sleeve	N/A

Fits A11X, A37X handles, and some competitors hand trucks



Part #	Keg Hook (Standard Only)
E9*	Keg Hook for Sankey Style 1/2 Barrel

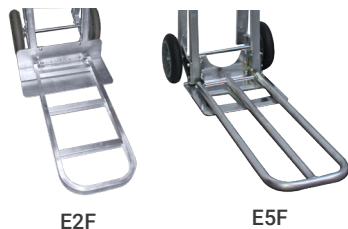
**For curved back frames only*



Part #	Frame Wings (Standard or BTT)	Length x Width
E30	Standard Frame Wings	34" x 2"
E30E	Fixed Wings, for B17/B18 "Ergo" Frame	40.3" x 2"
E31	Fixed Wings for Standard Frame	44.5" x 2"
E31F	Fixed Wings w/ Cutout for use w/ for Flared Handles	45" x 2"
E74	Fixed Wings, Standard Frame	33.5" x 4"



Part #	Ratchet Strap (Standard or BTT)	Length x Width
E73	9' Retractable Ratchet Strap	9' x 2"



Part #	Folding Noses (Standard or BTT)	Capacity
E2F or E2R	Full Channel Extruded Folding Nose, 20"	300 lb
E3F or E3R	Full Channel Extruded, Folding Nose, 30"	300 lb
E4F or E4R	Tubular Folding Nose, 44"	110 lb
E5F or E5R	Tubular Folding Nose, 36"	110 lb
E6F or E6R	Tubular Folding Nose, 30"	110 lb
E10F or E10R	Tubular Folding Nose, 34"	110 lb
E88F	Tubular Folding Nose, Front Mount, 14"	110 lb

Order "F" for use with front mount nose plates
Order "R" for use with recessed heel or rear mount nose plates

Part #	Miscellaneous (Standard or BTT)
E16	Garment Hook
CB	Carpeted Back

BTT = Tread Brake Truck

POWDER COAT/AMERICAN PRIDE

Add a splash of color...

Combine your company decal with a high quality powder coated frame!

B&P Powder Coating allows you to customize your hand truck to help deter theft, build brand recognition, and increase visibility. Choose from 12 colors to customize your frame, side channels, and stair climbers.

Customize your hand truck frames with a 2"x10" decal that has your company logo and contact information for a small fee.



Powder Coat Color Options:

Blue #01	Red #02	Black #03	Pink #04	Yellow #05	Green #06
Orange #07	Maroon #09	Medium Blue #10	Gold #11	White #12	Gray #13

Show your pride in buying American Made Products by sporting your red, white and blue hand truck!



Choose from a large selection of standard Liberator components and accessories to customize your own "American Pride" hand truck.

NOTE: Must have red or blue frame and opposing color stair climbers. Automatically includes the "American Pride" decal. Simply add -AP to the end of your model number.

LIBERATOR SNACK/BAKERY TRUCKS



HTA-16

Part #	Snack Delivery Trucks
HTA-16	Snack Food Delivery Hand Truck as Shown w/ 8" Wheels (D16)
HTA-15	Snack Food Delivery Hand Truck w/ 10" Wheels (D5)
Specifications	
Overall Height	68" - 73"
Overall Width	18"
Folding Nose Length	34" - 36"
Weight	28 - 35 lb
Capacity (Folding Nose)	80 lb
Capacity	600 lb



HTA-14
Upright Position



HTA-14
Lay Down Position

Part #	Folding Snack Delivery Trucks
HTA-14	Folding Snack Hand Truck w/ 14" x 10 1/2", Rear Mount, Extruded Aluminum (C31) Nose Plate
HTA-10	Folding Snack Hand Truck w/ 14" x 7 1/2", Recessed Heel, Cast Aluminum (CA1 500 lb Capacity) Nose Plate
Specifications	
Overall Height	68" - 73"
Overall Width	18"
Folding Nose Length	34" - 36"
Folding Snack HT Bed Length	66"
Folding Snack HT Handle Height	46"
Folding Snack HT Nose Height	46"
Weight	28 - 35 lb
Capacity (Folding Nose)	80 lb
Capacity (2 Wheel)	600 lb
Capacity (4 Wheel)	1200 lb



Part #	Sliding Extension Hand Truck
HTA-27	Liberator Hand Truck, Sliding Extension 7' To 10' (500 lb Capacity)

- ▶ Telescopes from 91"-118" (3 adjustable heights secured by lock pins)
- ▶ Light weight aluminum handle with comfort grips and smooth nylon slides
- ▶ Extruded aluminum 16" x 12" nose plate (C8)
- ▶ No flat wheels (D6SS)
- ▶ Aluminum skids w/ nylon wear strips allow truck to easily slide out from the delivery vehicle

LIBERATOR SNACK/BAKERY TRUCKS



HTA-24



Optional
extended length
single pin handle

Part #	Extension Hand Truck
HTA-24	Bakery Hand Truck w/ Handle Options
Specifications	
Weight	34 lb (w/ 2 handles)
Overall Height	84"
Capacity	600 lb
Width	18" (at wheel)
Nose Plate	18 1/4" x 12"
Available Options	
A7 - Extended Length Single Pin Handle	
2nd B80 Handle	

- ▶ Shipped knocked down or boxed, unassembled



Shown w/ optional
stair climbers




Nose plate shown
in upright position

Part #	Ice Cream Cart
IC-1	Ice Cream Truck w/ D16 Wheels, 18" Slotted Nose
Specifications	
Overall Height	46"
Overall Width (Pneumatic)	24"
Usable Depth (Bottom)	18"
Overall Depth (Open)	26"
Overall Depth (Closed)	10"
Available Nose Plate Options	
18" - Slotted Nose (Standard)	24S - 24" Solid Nose
18S - 18" Solid Nose	24SL - 24" Slotted Nose
Available Wheel Options	
D16 - 8" Balloon Cushion (Std)	D9 - 8" Pneumatic
D1 - 8" TPR, Dark Gray Non-Marking	D12 - 8" Mold-On Rubber, Aluminum Core
Additional Option	
E1L - Stair Climbers	

- ▶ Riveted construction for durability
- ▶ Aircraft grade cables support nose. Vinyl coated to resist corrosion.
- ▶ Engineered housing supports axle and allows for use of stairclimbers

LIBERATOR SPECIALTY TRUCKS



Part #	Liberator 700: with the DNA of the Liberator, but the strength of a beast!			<div><div>Liberator⁷⁰⁰</div><div>The "BEAST"</div><div></div></div>
HTA-700	Disc Brake Hand Truck w/ Stair Climbers (E1EB), Pull Bar (E29), Severe Duty Wings (E30SD), and Kick Back Bar (E46E), 700 lb Capacity			
Available Options				
E8L	12" Long Heavy Duty Wheel Guards	8218-001	Accessory Bag (12"W x 18"H x 2"D)	
E73	Ratchet Strap Attachmen	8218-002	Accessory Bag (12"W x 18"H x 3"D)	

700 lb Capacity!

NEW!



A137-B118-C106-D5-E1E








A156-B118-C141-D6SS-E137L-E175



A156-B118-C141-D6SS-E137L-E175-E198C



A140-B118-C109-D6SS-E72-E199-E175

Part #	Liberator XT		Liberator ^{XT}
HTX-1	Extra Wide Line of Liberator Hand Trucks (19" Frame Width)		
Available Options			
A119	Handle, 68" Squared Loop w/ Angled Flared Double Grips 	D5S	See Page 8 & 9 For Wheel Spec. Info
A137	Handle, Standard Squared Off Loop 55"	D6	See Page 8 & 9 For Wheel Spec. Info
A140	Handle, 58" Squared Loop w/ Angled Flared Double Grips 	D6SS	See Page 8 & 9 For Wheel Spec. Info
A147	Handle, 58" Sq. Loop w/ Vertical Loop Grips, One Crossmember 	D15	See Page 8 & 9 For Wheel Spec. Info
A156	Handle, 68" Sq. Loop w/ Vertical Loop Grips, Two Crossmembers 	E1L	Stair Climber, Extruded Aluminum
A188	Handle, 68" Sq. Loop w/ Vertical Loop Grips & Pull Back Loop 	E1E	Ergo Stair Climber, Extruded Aluminum
B118	Frame, LIBERATOR XT, Straight Back, Vertical Strap	E1C	Stair Climber, Cast
C106	Nose Plate, Extruded 28" x 9" Solid Front Mount	E72	Skids - Appliance Style w/ Plastic Wear Strips
C109	Nose Plate, Extruded 28" x 12" Solid Front Mount	E173	Retractable Strap Kit
C141	Nose Plate, Extruded 28" x 5.5" Solid Front Mount	E175	Retractable Strap w/ 4 ft. Extension
D2	See Page 8 & 9 For Wheel Spec. Info	E137L	Fourth Wheel Attachment w/ Latch
D5	See Page 8 & 9 For Wheel Spec. Info	E198	Snap-On Deck, 19.25" x 37.75"
D5F	See Page 8 & 9 For Wheel Spec. Info	E198C	Snap-On Deck, 19.25" x 37.75" Carpeted
D5G	See Page 8 & 9 For Wheel Spec. Info	E199	Wings, 41" x 4-3/8" Wide



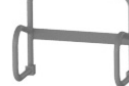
A137



A140



A119



A147



A156



A188

 Heat Treated

LIBERATOR SPECIALTY TRUCKS



A11-B5MK-C29-D6SS-E1E-E55

A10-B5MK-C29-D16-E44E-NA

Part #	Keg Trucks
B5K	Sliding Keg Hook Frame. Adjustable
B5MK	Sliding Keg Hook Frame. Adjustable
Available Options	
E1E - Ergo Stair Climbers	E1L - Standard Stair Climbers
NA - 14" Narrow Aisle Design	2002-E44 - Narrow Aisle Stair Climber

- ▶ Any of our Liberator hand trucks can become a keg truck. Look to our "Build A Liberator Hand Truck" section for other options.
- ▶ B5K frame hook will securely stack up to two kegs of any size.
- ▶ B5MK frame has adjustable tines on the hook to accept a wide variety of craft kegs (hauls up to 3 kegs).
- ▶ Steel nose plates slide well under alum. kegs. 18" widths allow two 1/6 barrel kegs to fit side by side. A variety of other sizes are available.
- ▶ Also available in tubular.



Part #	Three Way Hand Truck
B60-CA2-D5	Three Way Liberator Hand Truck
Specifications	
Height in 2 Wheel Position	52"
Height in 4 Wheel Position	42"
Deck Size	51" x 12"
Deck Height	11"
Capacity in 2 Wheel Position	600 lb
Capacity in 4 Wheel Position	900 lb
Weight	48 lb

- ▶ Upright, 45° and laydown positions (nose tucks in when folded up).



Shown w/ Optional Wheel Kit and carpeted bottom/top shelf

Part #	Studio Carts
B89-C2FT-D5-E3RFT	Senior Convertible Studio Cart w/ 30" Folding Nose
B77-C2FT-D5-E3RFT	Junior Convertible Studio Cart w/ 30" Folding Nose
Available Options	
E24T - 24" Carpeted Top Shelf	E22L - JR. Snap on Deck
E24B - 24" Carpeted Bottom Shelf	E24L - JR. Permanent Deck
E18T - 18" Carpeted Top Shelf	E23L - SR. Snap-On Deck
E18B - 18" Carpeted Bottom Shelf	E25L - SR. Permanent Deck
EWK - 8" Wheel Kit w/ Handle	

- ▶ Available w/ D5, D6, D6SS or D15 wheels.
- ▶ Standard cart is a Sr. or Jr. convertible w/ swing arm, casters and 30" folding nose.
- ▶ 18" x 7-1/2" extruded aluminum C2 nose plate.
- ▶ Optional shelves, can mix and match.
- ▶ Shelf capacity 200 lb.
- ▶ Optional heavy duty 8" wheel kit instead of standard 5" casters.



Part #	High Capacity Drip Free Convertible	
LCHT-ICE	Senior Convertible w/ Drip Free Tray	
	Specifications	
	Total Weight	57 lb
	Holds Up To	(100) 7 lb bags
	Holds Up To	(40) 20 lb bags
	Capacity in 2 Wheel Position	500 lb
	Capacity in 4 Wheel Position	1,000 lb
	Available Option	
	2002-364 - Cam Buckle Strap to Help Secure Loads During Transport	


- ▶ All of the Liberator Convertible features, customized for ice delivery.
- ▶ Welded corner seams are smooth to help prevent tearing of bags.
- ▶ Aluminum 18" x 49" pan holds up to 2 gallons of water, helping protect customers' floors.
- ▶ Kit available to add ice pan to most existing convertible trucks.
- ▶ Folds up for storage/transportation.

Developed with a national retailer to safely move appliances from the warehouse to showroom and to customers vehicle for loading.



APPL-3

APPL-1 w/ Optional A1

Part #	APPL Series Appliance Trucks	
APPL-1	Appliance Truck w/ Double A1 Handles, 4th Wheel Attachment, Kick Bar & D16 Wheels	
	Additional APPL Appliance Truck Models	
	APPL-2 - w/ D15 Wheels	APPL-5 - w/ Side Loops, Skids & D6 Wheels
	APPL-3 - w/ Side Loops, Skids & D6SS Wheels	APPL-6 - w/ Side Loops, Skids & D15 Wheels
	APPL-4 - w/ Side Loops, Skids & D5 Wheels	

- ▶ APPL Series Appliance Trucks feature wings w/ protective rubber strips to help reduce damage to appliances.
- ▶ Countersunk, flush nose plate fasteners.
- ▶ APPL-1 has 4th wheel to take the load off the operator and ratchet strap to secure loads.
- ▶ APPL-2 features 30" skids w/ 10" wheels for outdoor, stair, and curb applications.

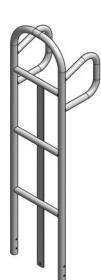


HTA-8

Part #	HTA Series Appliance Trucks	
HTA-6	4th Wheel Attachment, Wings & D16 wheels	
HTA-8	4th Wheel Attachment, 16" Wide Solid Deck w/ Rubber Strips For Protection & D16 Wheels	

BUILD A CRUSADER TUBULAR FRAME TRUCK

T - HANDLE & FRAME



T01



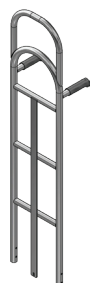
T02



T03

Part #	Straight Back
T01*	Straight Back w/ Double Loop Handle
T02*	Straight Back w/ Double Handle Flared Grips
T03*	Straight Back w/ Single Pin Handle

* Stair climber available as an option



T89



T95



T98

Part #	Straight Back with Extensions and Stair Climber Brackets
T89	Straight Back, FWD Strap, No Stair Climber Brackets
T95	Straight Back, Back Strap, Stair Climber Brackets
T98	Straight Back, Back Strap, Stair Climber Brackets, Narrow Aisle



T90



T92



T96

Part #	Straight Back with Stair Climber Brackets and Wings
T90	Straight Back, FWD Strap, Short Wings, Stair Climber Brackets
T92	Straight Back, FWD Strap, Wings, Stair Climber Brackets
T96	Straight Back, Back Strap, Wings, Stair Climber Brackets



T04



T05



T06



T97

Part #	Straight Back
T04*	Curved Back w/ Double Loop Handle
T05*	Curved Back w/ Double Handle
T06*	Curved Back w/ Single Pin Handle
T97	Curved Back, FWD Strap, Stair Climber Brackets, Narrow Aisle

* Stair climber available as an option



T07



T08



T09



T93

Part #	Sliding Keg Hook
T07*	Sliding Keg Hook/Curved Back w/ Double Loop Handle
T08*	Sliding Keg Hook/Curved Back w/ Double Handle
T09*	Sliding Keg Hook/Curved Back w/ Single Pin Handle
T93	Sliding Keg Hook/Curved Back, Stair Climber Brackets, Narrow Aisle

* Stair climber available as an option

Frames are heat treated for superior strength and durability.

C - NOSE PLATE



C1

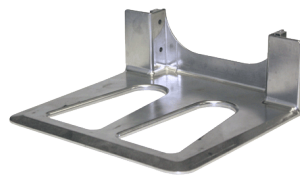


C20

Part #	Extruded Recessed Heel	Width x Depth
C1	Recessed Heel w/ Cutouts, Extruded Aluminum	14" x 7.5"
C19	Recessed Heel, Extruded Aluminum	14" x 7.5"
C7	Recessed Heel w/ Cutouts, Extruded Aluminum	14" x 10.5"
C2	Recessed Heel w/ Cutouts, Extruded Aluminum	18" x 7.5"
C20	Recessed Heel, Extruded Aluminum	18" x 7.5"
C15	Recessed Heel w/ Cutouts, Extruded Aluminum	18" x 10.5"



CA1



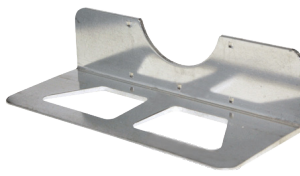
CA3

Part #	Cast Recessed Heel	Width x Depth
CA1*	Recessed Heel w/ Cutouts, Cast	14" x 7.5"
CA2*	Recessed Heel w/ Cutouts, Cast	18" x 7.5"
CA3*	Recessed Heel w/ Cutouts, Cast	14" x 12"

* All cast aluminum nose plates have a 500 lb capacity and 1 year warranty



C16



C13

Part #	Extruded Front Mount	Width x Depth
C16	Front Mount, Extruded Aluminum	14" x 7.5"
C12	Front Mount w/ Cutouts, Extruded Aluminum	14" x 7.5"
C4	Front Mount, Extruded Aluminum	14" x 9"
C8	Front Mount, Extruded Aluminum	16" x 12"
C17	Front Mount, Extruded Aluminum	18" x 7.5"
C13	Front Mount w/ Cutouts, Extruded Aluminum	18" x 7.5"
C6	Front Mount, Extruded Aluminum	18" x 9"
C26	Front Mount w/ Cutouts, Extruded Aluminum	18" x 9"
C14	Front Mount, Extruded Aluminum	18" x 12"
C10	Front Mount, Extruded Aluminum	20" x 9"
C9	Front Mount, Extruded Aluminum	20" x 12"



C26



C9



C3



C5

Part #	Extruded Rear Mount	Width x Depth
C3	Rear Mount, Extruded Aluminum	14" x 7.5"
C5	Rear Mount, Extruded Aluminum	18" x 7.5"



C29



C22

Part #	Steel Recessed or Front Mount	Width x Depth
C29	Recessed Mount, Steel	14" x 7.5"
C28	Recessed Mount, Steel	18" x 7.5"
C21	Front Mount, Steel	14" x 9"
C22	Front Mount, Steel	18" x 9"

BUILD A CRUSADER TUBULAR FRAME TRUCK

D - WHEELS



Part #	Pneumatic Wheel	Diameter x Width	Weight
D5	4 Ply Pneumatic, 3 pc. Steel Hub, Precision Bearings	10" x 3.5"	4.4 lb
D5F	D5 Foam Filled - Can't Go Flat	10" x 3.5"	7.0 lb
D5S	D5 w/ Slime Sealant	10" x 3.5"	5.0 lb

Capacity: 350 lb per wheel

Recommended uses:

- ▶ Outdoor surfaces such as gravel, grass & sand
- ▶ Inclement conditions such as snow, slush or mud
- ▶ Rough or uneven surfaces
- ▶ Applications requiring superior shock absorption

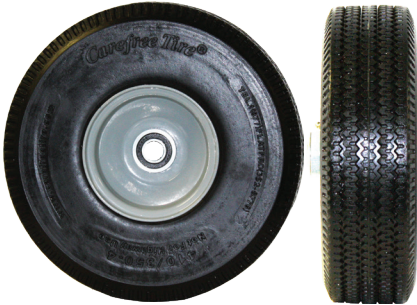


Part #	Pneumatic Wheel	Diameter x Width	Weight
D5G	D5 in Gray Color, Non-Marking	10" x 3.5"	4.4 lb

Capacity: 350 lb per wheel

Recommended uses:

- ▶ Outdoor surfaces such as gravel, grass & sand
- ▶ Inclement conditions such as snow, slush or mud
- ▶ Rough or uneven surfaces
- ▶ Applications requiring superior shock absorption



Part #	Carefree® Wheel	Diameter x Width	Weight
D6	No Flat Solid Foam, Non-Marking	10" x 3"	4.2 lb

Capacity: 350 lb per wheel

Recommended uses:

- ▶ Outdoor surfaces such as gravel, grass & sand
- ▶ Inclement conditions such as snow, slush or mud
- ▶ Rough or uneven surfaces



Part #	Pneumatic Wheel	Diameter x Width	Weight
D9	Pneumatic, 2 pc. Steel Hub	8" x 2.5"	2.9 lb

Capacity: 300 lb per wheel

Recommended uses:

- ▶ Smooth/semi smooth, hard surface
- ▶ General purpose



Part #	Carefree® Wheel	Diameter x Width	Weight
D6SS	Poly Hub, Non-Marking	10" x 3"	3.1 lb

Capacity: 350 lb per wheel

Recommended uses:

- ▶ Outdoor surfaces such as gravel, grass & sand
- ▶ Inclement conditions such as snow, slush or mud
- ▶ Rough or uneven surfaces



Part #	Balloon Cushion Wheel	Diameter x Width	Weight
D15	Poly Hub, Precision Bearings, Dark Gray, Non-Marking	10" x 2.125"	2.3 lb
D16	Poly Hub, Precision Bearings, Dark Gray, Non-Marking	8" x 2.125"	1.6 lb

Capacity: 350 lb per wheel

Recommended uses:

- ▶ Smooth/semi smooth, hard surfaces
- ▶ General purpose
- ▶ City deliveries - side walk & concrete
- ▶ Delicate floor, tile & carpet



Part #	Performance TPR Wheel	Diameter x Width	Weight
D1	High Performance, in Gray Color, Non-Marking	8" x 2"	2 lb

Capacity: 500 lb per wheel

Recommended uses:

- ▶ Smooth/semi smooth, hard surfaces
- ▶ General purpose



Part #	Rubber Wheel Description	Diameter x Width	Weight
D12	Mold on Rubber on Aluminum, Offset Hub	8" x 1.625"	2.1 lb

Capacity: 250 lb per wheel

Recommended uses:

- ▶ Smooth/semi smooth, hard surfaces
- ▶ General purpose

Safety Note: Never exceed rated hand truck capacity (600 lb, unless otherwise noted).

BUILD A CRUSADER TUBULAR FRAME TRUCK

E - ACCESSORIES



E1E



E1L

Part #	Extruded Stair Climbers
E1E	Extruded Aluminum Ergo Stair Climbers
E1L	Extruded Aluminum Stair Climbers



Part #	Wheel Guards	Length x Width
E8	Wheel Guards	7.38" x 2.5"
E8L	Wheel Guards	12" x 4"



Part #	Pull Back Bar
E47	Pull Back Bar for E1L Stair Climbers
E47E	Pull Back Bar for E1E "Ergo" Stair Climbers



E2F



E5F

Part #	Folding Noses	Capacity
E2F or E2R	Full Channel Extruded Folding Nose, 20"	300 lb
E3F or E3R	Full Channel Extruded, Folding Nose, 30"	300 lb
E4F or E4R	Tubular Folding Nose, 44"	110 lb
E5F or E5R	Tubular Folding Nose, 36"	110 lb
E6F or E6R	Tubular Folding Nose, 30"	110 lb

Order "F" for use with front mount nose plates

Order "R" for use with recessed heel or rear mount nose plates

FAQ for Crusader Hand Trucks:

Q What makes B&P Crusader hand trucks different from other tubular hand trucks?

A There are many great features that set our Crusader hand trucks apart from others on the market, but the most notable difference is that our nose plates are replaceable. You no longer have to throw out a \$200+ hand truck due to a dinged up nose plate.

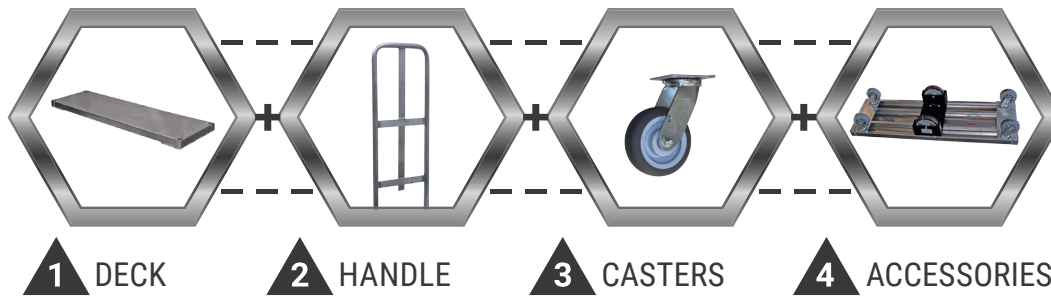
Q If I usually build a Liberator hand truck and want to build a configuration as a Crusader hand truck equivalent, which nose mounting kit do I use?

A Mounting kits are dependant on the nose plate type and wheel choice. If you are building a Liberator configuration as a Crusader, the nose plate would require the same mounting kit.

Q Do the Crusaders use the same parts as the Liberator hand trucks?

A Almost all of the nose plates and wheels are interchangeable, along with a few of the accessories. We have a dedicated Crusader mini catalog that shows all of the available options.

BUILD A ROUTE DELIVERY CART



1 - DECK



Part #	Deck Size	Width x Length
FHE-1854	Heavy Duty Bulk Delivery Cart Deck	18" x 54"
FHE-1857	Heavy Duty Bulk Delivery Cart Deck	18" x 57"
FHE-1860	Heavy Duty Bulk Delivery Cart Deck	18" x 60"
FHE-1861	Heavy Duty Bulk Delivery Cart Deck	18" x 61"

Powder Coat available with an upcharge.

2 - HANDLE



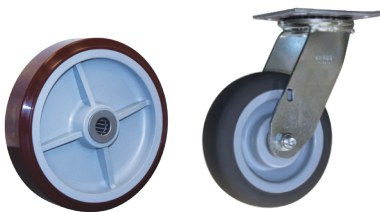
203
204

206
207

Option #	Handle
203	18" x 50" Round Handle
204	18" x 50" Round Handle w/ Curtain Buttons
206	18" x 50" Square Handle
207	18" x 50" Square Handle w/ Curtain Buttons
NH	No Handle(s)

Powder Coat available with an upcharge.

3 - CASTERS



HD10

Part #	Caster Configurations	
	Center Wheels	Casters
HD1*	8" TPR, Round Tread, Poly Core	8" Round Tread Swivel Casters
HD4	8" TPR, Square Tread, Poly Core Center	6" Square Tread Swivel Casters
HD8	8" TPR, Square Tread, Poly Core	6" Square Tread Swivel Casters
HD9	8" TPR, Round Tread, Poly Core	6" Square Tread Swivel Casters
HD10**	8" Urethane Square Tread	6" Square Tread Swivel Casters
SD7*	6" x 2" Square Tread	6" x 2" Square Tread Swivel Casters

* Not Available w/ Brakes

** Standard Wheel Configuration

BUILD A ROUTE DELIVERY CART

4 - ACCESSORIES



Part #	Accessories
2025-302	Carrier Plate

Bolt on plate allows transporting bulk deliver cart (handles removed) in most standard hand truck carriers



Part #	Accessories
2025-503	Containment Curtain - Requires Handle Buttons

- ▶ Helps protect product while delivering in inclement weather
- ▶ Eliminates need for expensive and messy stretch wrap
- ▶ Opens from either side
- ▶ Clips allow for fast adjustment to different load sizes
- ▶ Metal ends attach the curtain quickly and outlasts plastic



Part #	Brakes
CB	Center Brake System

Add -CB to the end of your part number

- ▶ Foot actuated brake. Levers located on both ends and both sides lock the center wheels for safer loading/unloading
- ▶ Exclusive design places brake rods under the deck allowing carts to be forklifted from the sides



FHE-1860-204-HD10-SH-CB

Part #	Add-On
2025-163*	18" Shelf - 200 lb Capacity - Requires 60" Cart

**Add -SH to the end of your part number*

- ▶ Quick release pins keep shelf safely on the cart. Attached to shelf so they do not get lost

PRECONFIGURED ROUTE DELIVERY CARTS



Part #	Deck Size	Handle	Caster Configuration	
			Center Wheels	Casters
FHE-16	16" x 60"	(1) 2025-174	(2) 8057-047, 6" x 2", Rigid, Polyurethane Caster	(4) 8057-046, 5" x 2", Swivel, Gray Performa
FHE-16CL	16" x 60"	(1) 2025-174	(2) 8057-093, 6" x 2" TPU, Rigid, Blue w/ Center Lock	(4) 8057-046, 5" x 2", Swivel, Gray Performa

Capacity: 1,200 lb **Weight:** 64 lb

- ▶ Slightly narrower, 16" width for tight delivery situations
- ▶ Same heavy duty construction
- ▶ Comes standard w/ one handle
- ▶ Optional 2nd handle and carrier plate
- ▶ CL indicates center lock HD dual brake system



Shown w/ Optional Center Brake (FHE-1 only)

Part #	Deck Size	Handle	Caster Configuration	
			Center Wheels	Casters
FHE-1	18" x 60"	(2) 2025-103	(2) 8057-114, 8" x 2" Urethane, Square Tread	(4) 8057-038, 6" x 2" TPR, Square Tread
FHE-1CL	18" x 60"	(2) 2025-103	(2) 8057-089, 8" x 2" TPU, Rigid, Blue w/ Center Lock	(4) 8057-038, 6" x 2" TPR, Square Tread

Capacity: 1,200 lb **Weight:** 95 lb

- ▶ Formed Stringers
- ▶ One piece deck eliminates peeling and warping
- ▶ Full width caster plates won't break off
- ▶ Full perimeter welded handle pockets stay secure
- ▶ Comes standard w/ two handles
- ▶ Several caster/wheel combinations to suit any delivery situation
- ▶ Optional 18" shelves available
- ▶ Optional Center brake w/ lever available on FHE-1
- ▶ CL indicates center lock HD dual brake system

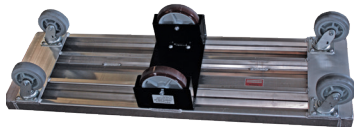


Shown w/ Center Lock HD Dual Brake System (FHE-16CL, FHE-1CL & FHE-8CL)

Part #	Deck Size	Handle	Caster Configuration	
			Center Wheels	Casters
FHE-23	18" x 60"	(2) 2025-103	(2) 8057-114, 8" x 2" Urethane, Square Tread	(4) 8057-038, 6" x 2" TPR, Square Tread

Capacity: 1,200 lb **Weight:** 95 lb

- ▶ Extruded tube stringers
- ▶ Severe duty deck



Part #	Deck Size	Handle	Caster Configuration	
			Center Wheels	Casters
FHE-6	18" x 60"	(2) 2025-103	(2) 8057-114, 8" x 2" Urethane, Square Tread	(4) 8057-038, 6" x 2" TPR, Square Tread
Same as FHE-1 w/ wide track configuration for Walkie Rider applications				

Capacity: 1,200 lb **Weight:** 110 lb

- ▶ Durable steel housings secure the center wheels
- ▶ Powder coated for excellent resistance to corrosion



Part #	Deck Size	Handle	Caster Configuration	
			Center Wheels	Casters
FHE-8	24" x 60"	(2) 2025-154	(2) 8057-114, 8" x 2" Urethane, Square Tread	(4) 8057-038, 6" x 2" TPR, Square Tread
FHE-8CL	24" x 60"	(2) 2025-154	(2) 8057-089, 8" x 2" TPU, Rigid, Blue w/ Center Lock	(4) 8057-038, 6" x 2" TPR, Square Tread

Capacity: 1,200 lb **Weight:** 93 lb

- ▶ Warehouse cart
- ▶ Optional 18" and 24" shelves
- ▶ Optional Center brake w/ lever available on FHE-8
- ▶ CL indicates center lock HD dual brake system

PRECONFIGURED ROUTE DELIVERY CARTS



Part #	Deck Size	Handle	Caster Configuration	
			Center Wheels	Casters
FHE-19	18" x 60" w/ 4° angle	(1) 2025-197	(2) 8057-114, 8" x 2" Urethane, Square Tread	(4) 8057-038, 6" x 2" TPR, Square Tread
		(1) 2025-198		
		(1) 2025-199		

Capacity: 1,200 lb **Weight:** 110 lb

- ▶ Deck angled toward rear helps keep product on the cart
- ▶ Removable back and handles for transportation/storage
- ▶ Clipboard holder on one end with spring clip for loose papers



Shown w/ 5012-502 Liner Option

Part #	Commercial Ice Cart	Cage Size (Width x Depth x Height)
5012-002	Ice Cart w/ Foot Brake System	19-3/8" x 18-1/2" x 56"
5012-003	Ice Cart w/ Dead Man Brake	19-3/8" x 18-1/2" x 56"
5012-006	XL Ice Cart w/ Dead Man Brake	22-3/8" x 21-1/2" x 56"

Available Options:

5012-502: Ice Cart Liner for 002 & 003

5012-505: XL Ice Cart Liner for 006

- ▶ Manuevers easily w/ swivel casters in front
- ▶ Flat free tires
- ▶ 5012-002 and 5012-003 can hold up to (22) 20 lb bags of ice
- ▶ 5012-006 can hold up to (25) 20 lb bags or (70) 7 lb bags of ice
- ▶ Tray keeps water off customers floors
- ▶ Optional liner helps keep condensation in the cart; can be silk screened with customer logo



Part #	Sprinter Van Carts
5018-004	FWD Cart, 144SP w/ Collapsible Shelving
5018-005	AFT Cart, 144SP w/ Collapsible Shelving

Make it a System:

5018-006: FWD Left Cart Brace

5018-009: AFT Left Cart Brace

5018-010: MID Left Cart Brace

5018-007: FWD Right Cart Brace

5018-008: AFT Right Cart Brace

5018-011: MID Right Cart Brace

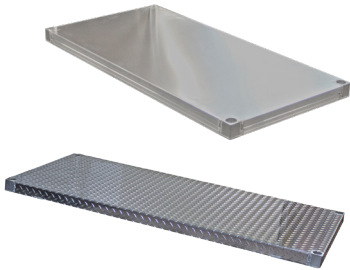


Part #	Milk Cart
5027-001	Milk Cart

- ▶ Made from durable, non-rusting aluminum
- ▶ 4 swivel casters allow easy maneuvering
- ▶ Holds 20 standard milk crates

BUILD A PLATFORM TRUCK

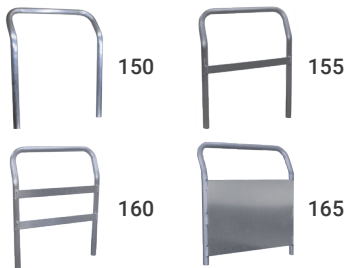
1 - DECK



Part # (Formed Deck)	Part # (Welded Deck)	Width x Length
PTF-2436-150	PT-2436-150	24" x 36"
PTF-2448-150	PT-2448-150	24" x 48"
-	PT-2460-150	24" x 60"
PTF-3048-150	PT-3048-150	30" x 48"
PTF-3060-150	PT-3060-150	30" x 60"
PTF-3072-150	PT-3072-150	30" x 72"
PTF-3648-150	PT-3648-150	36" x 48"
-	PT-3660-150	36" x 60"
-	PT-3672-150	36" x 72"

- Includes Deck and (1) #150 Handle
- Add "S" at the end of part number to indicate Smooth Plate
- Add "T" at the end of part number to indicate Diamond Plate
- Available with Powder Coat

2 - HANDLE



Option #	Handle
150	Handle, No Strap (Standard)
155	Handle, 1 Strap
160	Handle, 2 Straps
165	Handle, w/ 18" Panel

Available with Powder Coat

3 - CASTERS



Option #	Castors	Size	Capacity
650	Caster, Poly Core, Round TPR Tread	6" x 2"	1,500 lb
850	Caster, Poly Core, Round TPR Tread	8" x 2"	2,000 lb
820	Caster, Rubber on Iron Core	8" x 2"	2,000 lb
NC	No Casters		

Each truck comes with 2 rigid casters and 2 swivel casters

4 - ACCESSORIES

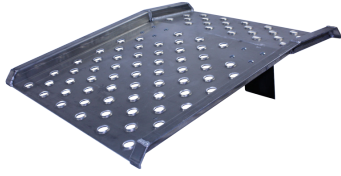


Option #	Accessories
310*	Rubber Bumper, Gray
C**	Carpeted Deck, Gray
060	Floor Lock for 6" Casters
080	Floor Lock for 8" Casters

*Welded deck is required for full perimeter rubber bumper and carpet options.

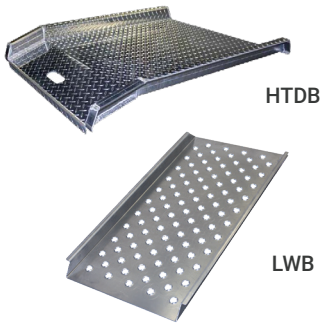
**Full perimeter rubber bumper is required with carpeted deck.

DOCK AND WAREHOUSE



APRON HAND TRUCK DOCK BOARDS

Part #	Width x Length	Capacity	Leg Length	Max. Height Difference	Weight
AHTD-3036	30" x 36"	800 lb	7"	5"	27 lb
AHTD-3048	30" x 48"	800 lb	9"	7"	35 lb



ALUMINUM DOCK BOARDS

Part #	Width x Length	Capacity	Weight
HTDB-2860	28" x 60"	700 lb	35 lb
HTDB-3048	30" x 48"	800 lb	30 lb
HTDB-3260	32" x 60"	700 lb	40 lb
LWB-2448	24" x 48"	750 lb	39 lb

PALLET DOLLIES

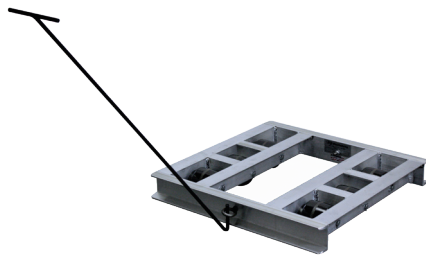
4,000 lb Capacity 6 Roller		6,000 lb Capacity 8 Roller		8,000 lb Capacity 10 Roller		Length
Model #	Weight	Model #	Weight	Model #	Weight	
2424-6T	34 lb	-	-	-	-	24" x 24"
3636-6T	32 lb	3636-8T	37 lb	3636-10T	40 lb	36" x 36"
3642-6T	34 lb	3642-8T	40 lb	3642-10T	43 lb	36" x 42"
3648-6T	36 lb	3648-8T	41 lb	3648-10T	44 lb	36" x 48"
4048-6T	36 lb	4048-8T	42 lb	4048-10T	45 lb	40" x 48"
4242-6T	37 lb	4242-8T	43 lb	4242-10T	46 lb	42" x 42"
4248-6T	37 lb	4248-8T	43 lb	4248-10T	46 lb	42" x 48"
4848-6T	38 lb	4848-8T	44 lb	4848-10T	47 lb	48" x 48"

Tilt option is standard. If non-tilt is desired, delete "T" and replace with "NT" when ordering

Available Options:

H: Two Handle Loops and Handle

CB: Center Support Crossbar



3636-6T-H

Shown with optional Handle

CURB AND DEFENDER WALK RAMPS



CRP2727-SY

Shown with optional
safety yellow powder coat.

PUNCHED CURB RAMPS WITH HAND SLOTS

Part #	Width x Length	Capacity	Weight
CRP2224	22" x 24"	500 lb	6 lb
CRP2618	26" x 18"	750 lb	8 lb
CRP2727	27" x 27"	750 lb	13 lb
CRP2736	27" x 36"	750 lb	17.5 lb
CRP3030	30" x 30"	750 lb	15 lb
CRP2745	27" x 45"	750 lb	22 lb



CRW2224

PUNCHED WEDGE CURB RAMPS WITH HAND SLOT

Part #	Width x Length	Capacity	Weight
CRW2224	22" x 24"	600 lb	6 lb
CRW2724	27" x 24"	750 lb	12 lb



CR3030

DIAMOND PLATE CURB RAMPS WITH HAND SLOT

Part #	Width x Length	Capacity	Weight	Stop
CR2618	26" x 18"	750 lb	10 lb	Legs
CR2727	27" x 27"	750 lb	17 lb	Legs
CR3030	30" x 30"	750 lb	20 lb	Legs
CRU2618	26" x 18"	750 lb	9 lb	Handle
CRU2727	27" x 27"	750 lb	16 lb	Handle
CRU2736	27" x 36"	750 lb	20 lb	Handle
CRU3030	30" x 30"	750 lb	19 lb	Handle
LCRU2618	26" x 18"	500 lb	6 lb	Handle
LCRU2727	27" x 27"	500 lb	11 lb	Handle

All of the above curb ramps can be powder coated safety yellow. Just Add -SY to the part number when ordering.

SMOOTH NON-SKID CURB RAMPS WITH HAND SLOT

Part #	Width x Length	Capacity	Weight	Stop
NCRU2727	27" x 27"	750 lb	15 lb	Handle
NCR2727	27" x 27"	750 lb	15 lb	Legs
NCR2736	27" x 36"	750 lb	20 lb	Legs
NCR2745	27" x 45"	1,400 lb	34 lb	Legs
NCR3030	30" x 30"	750 lb	19 lb	Legs
NCR3436	34" x 36"	1,400 lb	33 lb	Legs

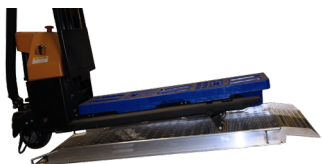


NCRU2727

Safety yellow not available on smooth non-skid curb ramps

PALLET JACK CURB RAMPS

Part #	Width x Length	Capacity	Weight
PRP-3606-SP1	36" x 72"	2,000 lb	56 lb

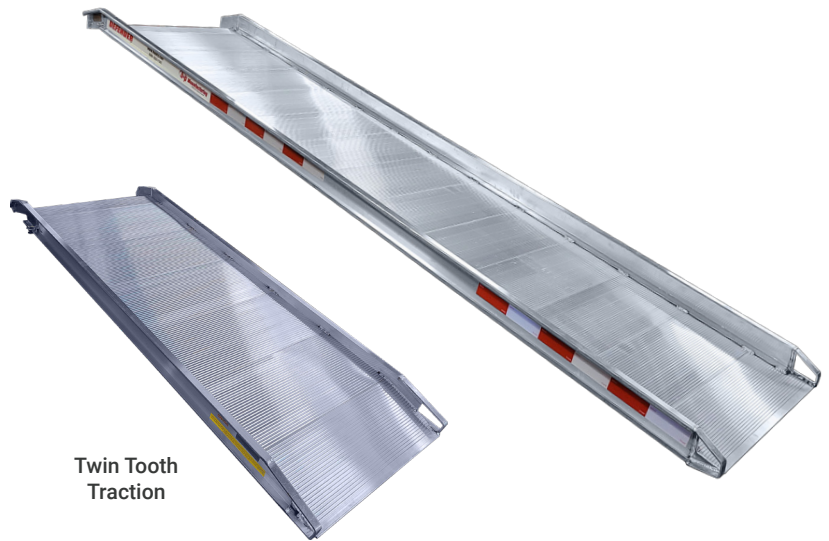


CURB AND DEFENDER WALK RAMPS

DEFENDER

HIGH CAPACITY DEFENDER WALK RAMPS

Part #	Width x Length	Capacity
HCR-3006	30" x 6'	4,000 lb
HCR-3012	30" x 12'	
HCR-3014	30" x 14'	
HCR-3016	30" x 16'	
HCR-3506	35" x 6'	
HCR-3512	35" x 12'	
HCR-3514	35" x 14'	
HCR-3516	35" x 16'	
HCR-3906	39" x 6'	
HCR-3908	39" x 8'	
HCR-3912	39" x 12'	
HCR-3914	39" x 14'	
HCR-3916	39" x 16'	



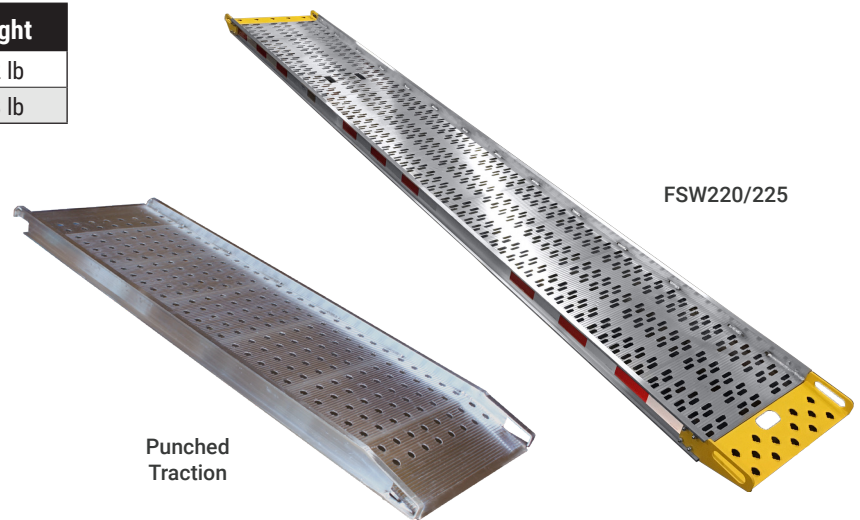
TWIN TOOTH TRACTION WALK RAMPS

Type	Min	Max	Length	Capacity	26" Width		28" Width		38" Width	
					Part #	Weight	Part #	Weight	Part #	Weight
A	6"	21"	6'	2,000 lb	-	-	PR-2806-A	48 lb	PR-3806-A	61 lb
	6"	25"	7'	1,800 lb	-	-	PR-2807-A	56 lb	PR-3807-A	70 lb
	6"	29"	8'	1,700 lb	-	-	PR-2808-A	63 lb	PR-3808-A	79 lb
	6"	33"	9'	1,650 lb	-	-	PR-2809-A	70 lb	PR-3809-A	88 lb
	6"	38"	10'	1,500 lb	-	-	PR-2810-A	77 lb	PR-3810-A	97 lb
	6"	46"	12'	1,400 lb	-	-	PR-2812-A	92 lb	PR-3812-A	115 lb
	6"	54"	14'	1,200 lb	-	-	PR-2814-A	107 lb	PR-3814-A	133 lb
	6"	62"	16'	1,000 lb	-	-	PR-2816-A	121 lb	PR-3816-A	151 lb
F	6"	23"	6'	2,000 lb	PR-2606-F	47 lb	PR-2806-F	49 lb	PR-3806-F	62 lb
	6"	27"	7'	1,800 lb	PR-2607-F	54 lb	PR-2807-F	57 lb	PR-3807-F	71 lb
	6"	31"	8'	1,700 lb	PR-2608-F	61 lb	PR-2808-F	64 lb	PR-3808-F	80 lb
	6"	35"	9'	1,650 lb	PR-2609-F	68 lb	PR-2809-F	71 lb	PR-3809-F	89 lb
	6"	40"	10'	1,500 lb	PR-2610-F	75 lb	PR-2810-F	79 lb	PR-3810-F	98 lb
	6"	48"	12'	1,400 lb	PR-2612-F	89 lb	PR-2812-F	93 lb	PR-3812-F	116 lb
	6"	56"	14'	1,200 lb	PR-2614-F	103 lb	PR-2814-F	108 lb	PR-3814-F	134 lb
	6"	64"	16'	1,000 lb	PR-2616-F	117 lb	PR-2816-F	122 lb	PR-3816-F	152 lb

Type A: Apron End Type F: Hook End

Part #	Food Service Walk Ramps (FSW)	Traction Type	Length	Capacity	Weight
FSW-2614-AH	Apron w/ 2 Hooks	Round Hole	14'	1,000 lb	105 lb
FSW-2614-AP	Apron w/ 2 Pins	Round Hole	14'	1,000 lb	105 lb
FSW-2614-ACP	Apron w/ Single Pin	Slotted	14'	1,300 lb	105 lb
FSW-2616-AH	Apron w/ 2 Hooks	Round Hole	16'	900 lb	117 lb
FSW-2616-AP	Apron w/ 2 Pins	Round Hole	16'	900 lb	117 lb
FSW-2616-ACP	Apron w/ Single Pin	Slotted	16'	1,000 lb	117 lb
FSW-2614-220	Hooks on 22" Centers	Slotted	14'	1,300 lb	105 lb
FSW-2614-225	Hooks on 22.5" Centers	Slotted	14'	1,300 lb	105 lb
FSW-2616-220	Hooks on 22" Centers	Slotted	16'	1,000 lb	117 lb
FSW-2616-225	Hooks on 22.5" Centers	Slotted	16'	1,000 lb	117 lb

Part #	Walk Ramp Carriers	Weight
C26140-STD	Carrier, Open, 26" Wide for 14' Ramp	142 lb
C26160-STD	Carrier, Open, 26" Wide for 16' Ramp	158 lb



PUNCHED TRACTION WALK RAMPS

Type	Min	Max	Length	Capacity	26" Width		28" Width		38" Width	
					Part #	Weight	Part #	Weight	Part #	Weight
A	6"	21"	6'	2,000 lb	PRP-2606-A	43 lb	PRP-2806-A	44 lb	PRP-3806-A	57 lb
	6"	25"	7'	1,800 lb	PRP-2607-A	50 lb	PRP-2807-A	52 lb	PRP-3807-A	66 lb
	6"	29"	8'	1,700 lb	PRP-2608-A	56 lb	PRP-2808-A	59 lb	PRP-3808-A	74 lb
	6"	33"	9'	1,650 lb	PRP-2609-A	63 lb	PRP-2809-A	66 lb	PRP-3809-A	82 lb
	6"	38"	10'	1,500 lb	PRP-2610-A	69 lb	PRP-2810-A	73 lb	PRP-3810-A	91 lb
	6"	46"	12'	1,400 lb	PRP-2612-A	83 lb	PRP-2812-A	87 lb	PRP-3812-A	107 lb
	6"	54"	14'	1,200 lb	PRP-2614-A	96 lb	PRP-2814-A	100 lb	PRP-3814-A	124 lb
	6"	62"	16'	1,000 lb	PRP-2616-A	110 lb	PRP-2816-A	114 lb	PRP-3816-A	141 lb
F	6"	23"	6'	2,000 lb	PRP-2606-F	44 lb	PRP-2806-F	45 lb	PRP-3806-F	58 lb
	6"	27"	7'	1,800 lb	PRP-2607-F	51 lb	PRP-2807-F	53 lb	PRP-3807-F	67 lb
	6"	31"	8'	1,700 lb	PRP-2608-F	57 lb	PRP-2808-F	60 lb	PRP-3808-F	75 lb
	6"	35"	9'	1,650 lb	PRP-2609-F	64 lb	PRP-2809-F	67 lb	PRP-3809-F	83 lb
	6"	40"	10'	1,500 lb	PRP-2610-F	70 lb	PRP-2810-F	74 lb	PRP-3810-F	92 lb
	6"	48"	12'	1,400 lb	PRP-2612-F	84 lb	PRP-2812-F	88 lb	PRP-3812-F	108 lb
	6"	56"	14'	1,200 lb	PRP-2614-F	97 lb	PRP-2814-F	101 lb	PRP-3814-F	125 lb
	6"	64"	16'	1,000 lb	PRP-2616-F	111 lb	PRP-2816-F	115 lb	PRP-3816-F	142 lb

Type A: Apron End Type F: Hook End

CUSTOM SOLUTIONS

B&P Manufacturing prides itself in creating custom material handling solutions specific to our customers' needs. When you have a material challenge, we can help!



Part #	Order Picking Cart
PT-36	24" x 54", red powder coat with neoprene rubber shelf liner

Capacity: 200 lb shelf. 1,200 lb total



Part #	Platform Truck
PT-39	24" x 48", smooth deck with full perimeter bumper. Dipped blue comfort grip on handle

- ▶ Aluminum box 16"W x 6"H x 6"D bolted to back of handle, for tools or other items
- ▶ Handle can be bolted in to lock in place



Part #	Fulfillment Cart
5026-002	18"W x 36"L x 60"H, w/ 2 angled upper shelves and lower shelf w/ corrugate dividers

Capacity: 150 lb each upper shelves, 600 lb lower shelf



Part #	Warehouse Picking Cart
FHE-21	24" x 48", includes middle shelf w/ product lip
2025-186	Optional angled top shelf. 200 lb capacity

Capacity: 200 lb shelf. 1,000 lb total



Part #	Water Bottle Tray - SR Convertible
2002-E77SR	12.5" x 55.5" snap on aluminum water bottle tray for SR Convertibles

Can hold up to (15) 5-gallon water bottles



Part #	Forklift Picking Cart
2809-001	48" x 91" deck with tread plate surface, 1,000 lb capacity

- ▶ Perforated swing out sides for easy unloading from either side
- ▶ Handle mounted to back
- ▶ Forklift pockets
- ▶ Wood chuck block



Part #	Tray Cart
5026-004	20"W x 66"L x 59"H. Holds up to 48 individual trays

Capacity: 200 lb shelf. 1,200 lb total

B&P Manufacturing Capabilities Include:

ENGINEERING

Full design services to ensure our product is helping you meet all your safety and efficiency goals.

METAL FABRICATION

With a focus in aluminum and steel, we are well skilled in CNC machining and bending for both sheet metal and extrusion.

WELDING

We have a full staff of certified welders as well as several robotic weld cells to accommodate any order size, 10 - 1,000+.

POWDER COATING

In-house ability to powder coat any of our products, you can increase brand identification with a bit of color.

ASSEMBLY

We maintain an active production facility and produce items that are ready to hit the ground running daily.

CUSTOM SOLUTIONS

Are you struggling with product movement that doesn't fit an off the shelf solution? From concept, to prototype, to high-volume full production manufacturing, B&P Manufacturing can work with your company to help create a customized solution!



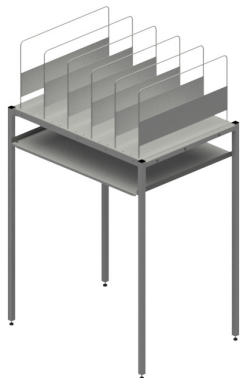
5033-001 Bakery Tray



5024-001 Picking Cart



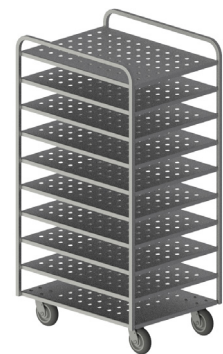
5019-001 Freezer Cart



5026-003 Conveyor Station



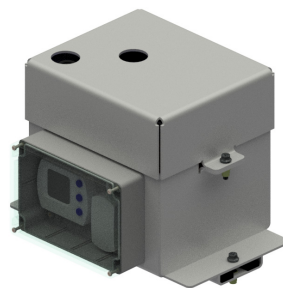
5024-004 Picking Cart



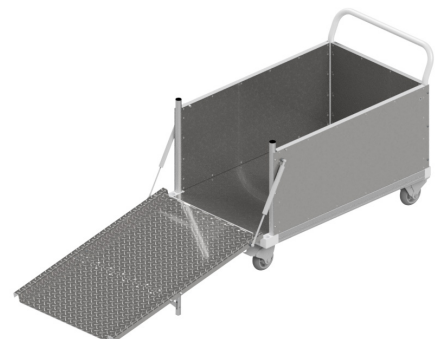
5019-002 Freezer Cart



2812-001 Greenhouse Cart



5018-023 Case Simulator



PT-37 Ramp Cart

THE INDUSTRY'S BEST WARRANTY!

B&P Manufacturing warrants to the original purchaser that the items covered by this agreement shall be free from defects in material and workmanship under normal use and service for a period of two (2) years from the date of shipment to the purchaser. If within such a period any product is proved to be defective, the product shall be repaired or replaced at the manufacturer's discretion.

B&P Manufacturing's obligation is limited to repair and replacement and is conditioned upon receiving a written notice of the alleged defects within the two (2) year warranty period and no more than ten (10) days after its discovery. After written approval by B&P Manufacturing, the product or defective part must be returned to B&P Manufacturing, FOB, its factory.

The term "original purchaser" as used in this warranty shall mean the person or entity to which product was shipped by B&P Manufacturing, its distributor or agent. If purchaser has enrolled in the 2 + 1 warranty program, then the above applies except the written notice needs to be within the three (3) year period and no more than ten (10) days after discovery. The product in question must be enrolled in the 2 + 1 program to qualify for the 1-year extension.

This warranty does not apply to parts subject to wear, parts not manufactured by B&P Manufacturing, or to products or parts repaired or altered by any entity other than B&P Manufacturing. It also does not cover defects or damage due to negligence, accident, abuse, or misuse.

Parts that are not covered under the two (2) year warranty are: tires, inner tubes, wheels (unless expressly specified otherwise in our literature), bearings, casters, drive belts, phenolic rollers, cast nose plates, cast stair climbers, accessory bags and lift chains. The warranty obligations of B&P Manufacturing shall in all respects conform and be limited to the warranty extended to B&P Manufacturing by the supplier.

XCELORATOR assisted hand truck electrical components (containing, but not limited to, electronics enclosure, motors, batteries, throttles) will be covered under the aforementioned warranty for a period of twelve (12) months from the date of shipment to the purchaser. The base hand truck and components thereof are subject to the above paragraphs, allowing coverage of up to a three (3) year period. All other stipulations expressed previously shall still apply.



**BACKED BY THE
INDUSTRY'S ONLY
2 + 1 FACTORY
EXTENDED
WARRANTY.**

For 2 + 1 factory extended warranty qualifications, visit <https://www.bpmfg.com/what-is-the-warranty-on-your-products/>

**2+1 Warranty Program Available on Liberator Hand Trucks Only*



California Proposition 65 Warning:

Some products may contain chemicals known to the State of California to cause cancer, birth defects or other reproductive harm. Please visit www.P65Warnings.ca.gov for additional information.



(800) 334-7141
(231) 775-2229



bpsales@bpmfg.com



8051 E. Boon Rd.
Cadillac, MI 49601, USA



www.bpmfg.com

Material Handling and
Delivery Products Catalog

Part Number: CATALOG-2025



B&P MANUFACTURING
Engineered Delivery Products