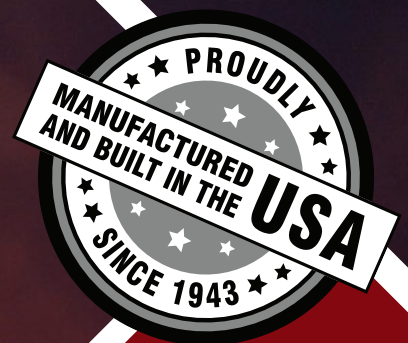




**B&P MANUFACTURING**

Engineered Delivery Products

Build An Xcelerator  
Hand Truck Catalog  
2025



[www.bpmfg.com](http://www.bpmfg.com)

**NEW!**



Putting safety at the forefront, your drivers can concentrate on maximum output, with less effort. The NEW XCELORATOR hand truck seamlessly transitions from manual or physical push/pull actions to powered with ease.

Drivers can simply go from powered to unpowered with the simple use of a throttle.

## KEY FEATURES & BENEFITS:

- ▶ Use with heavy loads on inclines like loading dock ramps, sidewalk aprons, curbs, and to reduce fatigue on long runs.
- ▶ Customizable powered hand truck options allow for various height drivers and different types of uses.
- ▶ The battery is easily interchangeable and can be charged in the cab or at the warehouse.
- ▶ The truck is light in weight and has a very low center of gravity centered around the wheel axle.
- ▶ Very low rolling resistance even with a dead battery, or without a battery entirely, hand truck is completely operable.
- ▶ Power driven assist wheels will not interfere with driver's legs or feet.
- ▶ Many modular B&P parts and components can be used to build to suit.
- ▶ Motor kit adds minimal weight (less than 17 lb. to its standard counterpart).



A11X-B1X-C6-D6SS-PWR

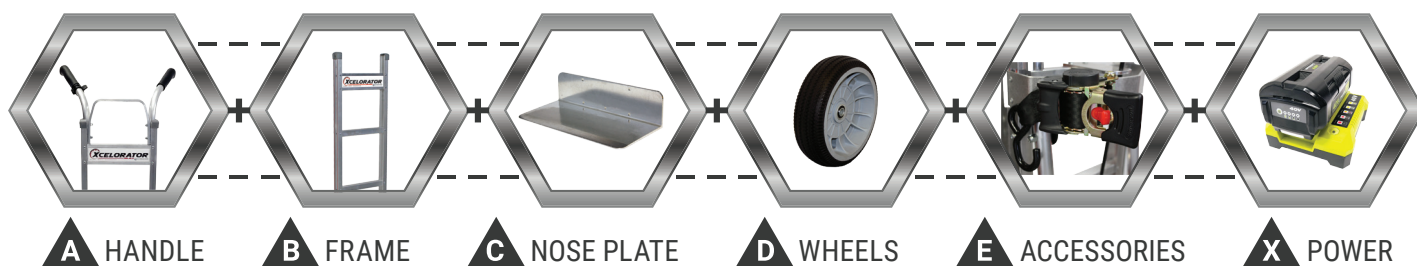


A9X-B1X-C6-D6SS-BTT-PWR

**When ordering Xcelerator, use PWR for Standard model or BTT-PWR for Tread Brake Truck model.**



***Scan QR Code to see the Xcelerator power assist hand truck in action!***



## A - HANDLE



Part #	Standard Loop (Standard or BTT)	Overall Height
A37X	Squared Loop, w/ Throttle Guard	50"



Part #	Flared Double Grips (Standard or BTT)	Overall Height
A11X	Flared Double Grip w/ U-Brace, Grip Height 48"	48"
A40X	Squared Loop, Flared Double Grips at 48", 1 Crossmember	52"
A42X	Squared Loop, Flared Double Grips at 48", 2 Crossmembers	62"



Part #	Straight Loop, Vertical Grip (Standard Only)	Overall Height
A7X	Straight Loop, Vertical Grip at 52"	52"
A10X	Straight Loop, Vertical Grip at 52" for B4/B5 Frame	52"
A8X	Straight Loop, Vertical Grip at 52"	60"
A25X	Straight Loop, Vertical Grip at 52" for B4/B5 Frame	60"
A9X	Straight Loop, Vertical Grip at 52"	68"

Part #	Straight Loop, Vertical Grip (BTT Only)	Overall Height
A7XT	Straight Loop, Vertical Grip at 52" w/ Brake Handle Bracket	52"
A8XT	Straight Loop, Vertical Grip at 52" w/ Brake Handle Bracket	60"
A9XT	Straight Loop, Vertical Grip at 52" w/ Brake Handle Bracket	68"



Part #	Square Loop, Single Pin Grip (Standard or BTT)	Overall Height
A12X	Squared Loop, Single Pin Grip at 52"	52"
A3X	Squared Loop, Single Pin Grip at 46"	52"
A4X	Squared Loop, Single Pin Grip at 46"	55"
A5X	Squared Loop, Single Pin Grip at 46"	62"
A6X	Squared Loop, Single Pin Grip at 46"	68"

Heat Treated    BTT = Tread Brake Truck



# XCELORATOR

## B - FRAME



Part #	Straight Back (Standard or BTT)	
B1X	Standard Straight Back, No Strap	P
B2X	Straight Back w/ 1 Vertical Strap	P
B3X	Straight Back w/ 2 Vertical Straps	P
B10X*	Straight Back, No Logo Channel & No Red Striping	P

\* B10X frame has a **500 lb** capacity



Part #	Curved Back (Standard or BTT)	
B4	Curved Back w/ 1 Vertical Strap	
B5	Curved Back, No Vertical Strap	

Part #	Curved Back (Standard Only)	
B5K	Curved Back w/ Sliding Keg Hook	
B5MK	Curved Back w/ Mini Keg Hook	



Part #	Combination Back and Ergo (Standard Only)	
B6X	Top 2 Crossbars Straight, Bottom Crossbar Curved	
B7X	Top Crossbar Straight, 2 Bottom Crossbars Curved	
B17X*	Straight Back, Tall Ergo	P
B18X*	Straight Back, Tall Ergo w/ 1 Vertical Strap	P

\* Ergo Frames add 6 5/16" to overall hand truck height

Part #	Combination Back and Ergo (BTT Only)	
B6XD	Top 2 Crossbars Straight, Bottom Crossbar Curved	
B7XD	Top Crossbar Straight, 2 Bottom Crossbars Curved	

### Powder Coat Color Options:



Frames are 600 lb. capacity unless otherwise noted. BTT = Tread Brake Truck

Powder Coat Available

## C - NOSE PLATE



C1

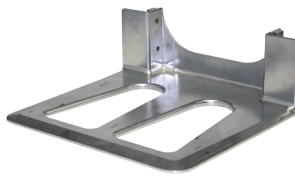


C20

Part #	Extruded Recessed Heel (Standard or BTT)	Width x Depth
<b>C1</b>	Recessed Heel w/ Cutouts, Extruded Aluminum	14" x 7.5"
<b>C19</b>	Recessed Heel, Extruded Aluminum	14" x 7.5"
<b>C7</b>	Recessed Heel w/ Cutouts, Extruded Aluminum	14" x 10.5"
<b>C2</b>	Recessed Heel w/ Cutouts, Extruded Aluminum	18" x 7.5"
<b>C20</b>	Recessed Heel, Extruded Aluminum	18" x 7.5"
<b>C15</b>	Recessed Heel w/ Cutouts, Extruded Aluminum	18" x 10.5"



CA1



CA3

Part #	Cast Recessed Heel (Standard or BTT)	Width x Depth
<b>CA1*</b>	Recessed Heel w/ Cutouts, Cast	14" x 7.5"
<b>CA2*</b>	Recessed Heel w/ Cutouts, Cast	18" x 7.5"
<b>CA3*</b>	Recessed Heel w/ Cutouts, Cast	14" x 12"

*\* All cast aluminum nose plates have a 500 lb capacity and 1 year warranty*



C16



C13



C26



C9

Part #	Extruded Front Mount (Standard or BTT)	Width x Depth
<b>C16</b>	Front Mount, Extruded Aluminum	14" x 7.5"
<b>C12</b>	Front Mount w/ Cutouts, Extruded Aluminum	14" x 7.5"
<b>C4</b>	Front Mount, Extruded Aluminum	14" x 9"
<b>C8</b>	Front Mount, Extruded Aluminum	16" x 12"
<b>C17</b>	Front Mount, Extruded Aluminum	18" x 7.5"
<b>C13</b>	Front Mount w/ Cutouts, Extruded Aluminum	18" x 7.5"
<b>C6</b>	Front Mount, Extruded Aluminum	18" x 9"
<b>C6C</b>	C6 w/ Countersunk Holes	18" x 9"
<b>C26</b>	Front Mount w/ Cutouts, Extruded Aluminum	18" x 9"
<b>C14</b>	Front Mount, Extruded Aluminum	18" x 12"
<b>C10</b>	Front Mount, Extruded Aluminum	20" x 9"
<b>C10C</b>	C10 w/ Countersunk Holes	20" x 9"
<b>C9</b>	Front Mount, Extruded Aluminum	20" x 12"
<b>C9C</b>	C9 w/ Countersunk Holes	14" x 7.5"
<b>C32</b>	Solid Front Mount, Extruded Aluminum	32" x 12"

Nose Plates are 600 lb. capacity unless otherwise noted. BTT = Tread Brake Truck

# XCELORATOR

## C - NOSE PLATE CONTINUED

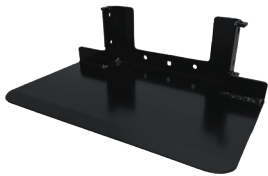


C37C



C37CC

Part #	Extruded Front Mount (Standard or BTT)	Width x Depth
<b>C37</b>	Solid Front Mount, Extruded Aluminum	14" x 5.5"
<b>C37C</b>	C37 w/ Countersunk Holes	14" x 5.5"
<b>C37CC</b>	C37 w/ Countersunk Holes and Carpeted Back	14" x 5.5"
<b>C38</b>	Solid Front Mount, Extruded Aluminum	16" x 5.5"
<b>C38C</b>	C38 w/ Countersunk Holes	16" x 5.5"
<b>C38CC</b>	C38 w/ Countersunk Holes and Carpeted Back	16" x 5.5"
<b>C39</b>	Solid Front Mount, Extruded Aluminum	18" x 5.5"
<b>C39C</b>	C39 with Countersunk Holes	18" x 5.5"
<b>C39CC</b>	C39 w/ Countersunk Holes and Carpeted Back	18" x 5.5"
<b>C41</b>	Solid Front Mount, Extruded Aluminum	20" x 5.5"
<b>C41C</b>	Solid Front Mount, Extruded Aluminum	20" x 5.5"
<b>C41CC</b>	C41 w/ Countersunk Holes	20" x 5.5"
<b>C45</b>	Solid Front Mount, Extruded Aluminum	14" x 12"



C29



C22

Part #	Steel Recessed or Front Mount (Standard or BTT)	Width x Depth
<b>C29</b>	Recessed Mount, Steel	14" x 7.5"
<b>C28</b>	Recessed Mount, Steel	18" x 7.5"
<b>C21</b>	Front Mount, Steel	14" x 9"
<b>C22</b>	Front Mount, Steel	18" x 9"

## D - WHEELS



D5



D5G



D6SS

Part #	Wheels (Standard or BTT)	Diameter x Width	Weight
<b>D5</b>	4 Ply Pneumatic, 3 pc. Steel Hub, Precision Bearings	10" x 3.5"	4.4 lb
<b>D5G</b>	D5 in Gray Color, <b>Non-Marking</b>	10" x 3.5"	4.4 lb
<b>D6SS</b>	Carefree®, Poly Hub, Precision Bearings, <b>Non-Marking</b>	10" x 3"	3.1 lb

Nose Plates are 600 lb. capacity unless otherwise noted. BTT = Tread Brake Truck



## E - ACCESSORIES



(Shown with A1 handle)

Part #	Extruded Frame Extension (Standard or BTT)	Overall Height
E45	Fixed Wings w/ Cutout for use w/ for Flared Handles	45"
E52	Extruded Frame Extension	52"
E55	Extruded Frame Extension	55"
E60	Extruded Frame Extension	60"
E68	Extruded Frame Extension	68"
E11	Frame Extension Foam Sleeve	N/A

Fits A11X, A37X handles, and some competitors hand trucks



Part #	Keg Hook (Standard Only)
E9*	Keg Hook for Sankey Style 1/2 Barrel

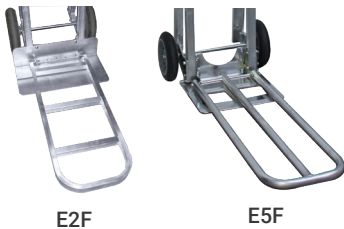
\*For curved back frames only



Part #	Frame Wings (Standard or BTT)	Length x Width
E30	Standard Frame Wings	34" x 2"
E30E	Fixed Wings, for B17/B18 "Ergo" Frame	40.3" x 2"
E31	Fixed Wings for Standard Frame	44.5" x 2"
E31F	Fixed Wings w/ Cutout for use w/ for Flared Handles	45" x 2"
E74	Fixed Wings, Standard Frame	33.5" x 4"



Part #	Ratchet Strap (Standard or BTT)	Length x Width
E73	9' Retractable Ratchet Strap	9' x 2"



E2F

E5F

Part #	Folding Noses (Standard or BTT)	Capacity
E2F or E2R	Full Channel Extruded Folding Nose, 20"	300 lb
E3F or E3R	Full Channel Extruded, Folding Nose, 30"	300 lb
E4F or E4R	Tubular Folding Nose, 44"	110 lb
E5F or E5R	Tubular Folding Nose, 36"	110 lb
E6F or E6R	Tubular Folding Nose, 30"	110 lb
E10F or E10R	Tubular Folding Nose, 34"	110 lb
E88F	Tubular Folding Nose, Front Mount, 14"	110 lb

Order "F" for use with front mount nose plates

Order "R" for use with recessed heel or rear mount nose plates

Part #	Miscellaneous (Standard or BTT)
E16	Garment Hook
CB	Carpeted Back

BTT = Tread Brake Truck



**(800) 334-7141**  
**(231) 775-2229**



**[bpsales@bpmfg.com](mailto:bpsales@bpmfg.com)**



**8051 E. Boon Rd.**  
**Cadillac, MI 49601, USA**



**[www.bpmfg.com](http://www.bpmfg.com)**

**Build An Xcelerator**  
**Hand Truck Catalog**

**Rev: 10-2024**



**B&P MANUFACTURING**  
**Engineered Delivery Products**