



**B&P MANUFACTURING**

Engineered Delivery Products

Facility Maintenance  
Product Catalog  
2025



[www.bpmfg.com](http://www.bpmfg.com)

# LIBERATOR HAND TRUCKS



**B&P MANUFACTURING**

Engineered Delivery Products

## BACKED BY 2-YEAR WARRANTY!

**Liberator**

### A - HANDLES

- ▶ Large selection.
- ▶ Heat treated handle line available, provides greater strength & abrasion resistance.

### B - FRAMES

- ▶ 600 lb. capacity vs. competitors 500 lb.
- ▶ 4-sided ribbed cross members and top logo channel for rigidity & strength.
- ▶ Logo channel allows room for custom company decal.
- ▶ Assembled with aviation grade rivets.

### C - SIDE CHANNEL REINFORCEMENTS

- ▶ Bolted at top and bottom, spreading out stress to resist cracking or bending of frames.

### D - POWDER COATING

- ▶ Frame & stair climber powder coating options in red, blue, green, orange, pink & black.

### E - STAIR CLIMBERS

- ▶ Extruded much more durable than cast.
- ▶ Extra thick reversible bolt on wear strips outlast all others many times over.
- ▶ E1E Ergo Stair Climber to maneuver stairs with less effort.

### F - NOSE PLATE BRACKETS

- ▶ B&P's extruded aluminum solid brackets will not crack or break.
- ▶ Beveled to inside of frame to eliminate gaps which allow for play & loosening up over time.

### G - WHEEL BRACKETS

- ▶ Axle brackets are made from high-strength extruded aluminum, and are not castings. Guaranteed for life!

### H - WHEELS

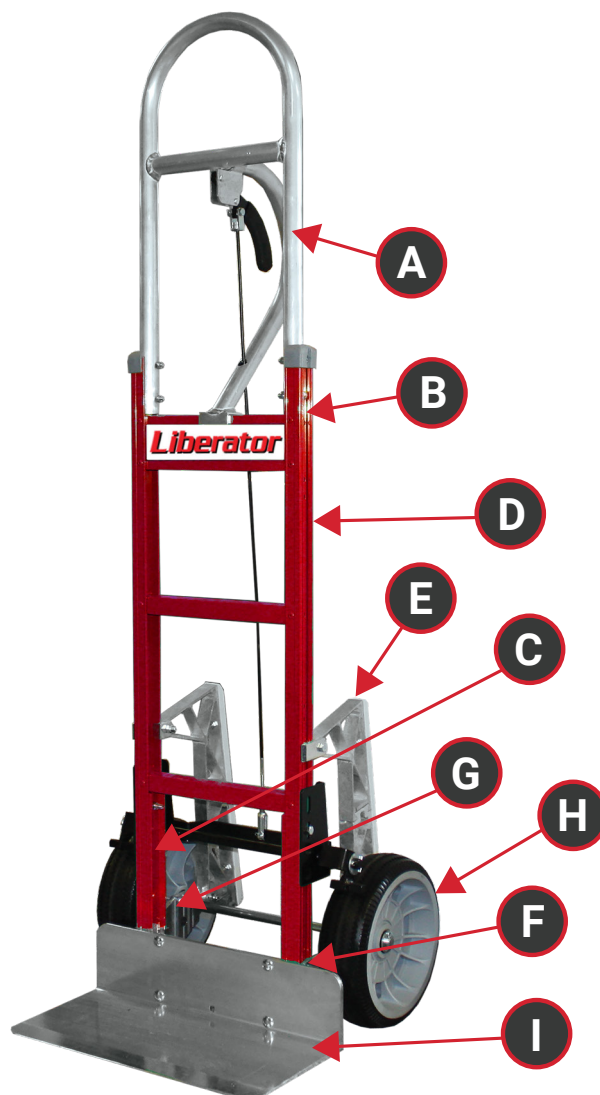
- ▶ Several different wheel options are available for your specific application.
- ▶ From premium pneumatics to traditional flat free, we offer only the best wheels available.

### I - NOSE PLATES

- ▶ 600 lb. capacity extruded aluminum.
- ▶ Many options for widths & lengths.
- ▶ Beveled leading edge.
- ▶ 500 lb. capacity cast aluminum available.

*Add on disc or tread brakes when you need total stopping power.*

*Find additional options in our digital catalog on our resources page.*



[bpsales@bpmfg.com](mailto:bpsales@bpmfg.com)



(800) 334-7141



[bpmfg.com](http://bpmfg.com)



# BUILD YOUR HAND TRUCK

## CUSTOMIZING IS AS EASY AS A-B-C-D-E

**Liberator**

### A - HANDLE

### B - FRAME

### C - NOSE PLATE

### D - WHEELS



**A7**  
Vertical Grip  
52" high



**A16**  
Flared Double, Vertical  
Loop Grips 60" high



**A8**  
Vertical Grip at 52"  
60" high



**A57S**  
Double Vertical Loop  
Grip w/ 2 cross  
members 62" high



**A9**  
Vertical Grip at 52"  
68" high



**A56S**  
Double Vertical  
Loop Grip  
62" high



**A11**  
Double Loop w/ U-Brace



**A1**  
Standard Loop



**A41**  
Square Loop  
w/ Angled Double  
Grips 55" high



**A14**  
Standard Loop  
w/ U-Brace &  
Comfort Sleeve



**A42**  
Square Loop  
w/ Angled Double  
Grips 62" high



**A2**  
Standard Loop  
w/ U-Brace



**A3-A4-A5**  
Single Pin Grip at 46"  
A3: 52" high  
A4: 55" high  
A5: 62" high



**A12**  
Single Pin  
52" high

Additional handle options are available.



**B1**  
Straight Back



**B4**  
Curve Back, w/1 Strap



**B2**  
Straight Back  
w/1 Vertical Strap



**B5**  
Curve Back,  
No Strap



**B3**  
Straight Back  
w/2 Vertical Straps



**B5K**  
Curve Back,  
w/Sliding Keg Hook



**B6**  
Combination Back,  
2 Straight, 1 Curved



**B7**  
Combination Back,  
1 Straight, 2 Curved

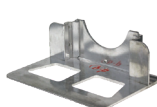


**B10**  
Straight Back. No Logo  
Channel. 500 lb. cap.

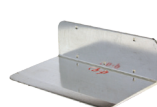


**B1#02**  
Straight back with  
red powder coat.

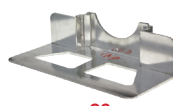
Powder Coat color options include:  
Blue, Black, Red, Green, Orange & Pink.



**C1**  
14" x 7 1/2"  
Extruded Aluminum  
Recessed Heel



**C4**  
14" x 9"  
Extruded Aluminum  
Front Mount



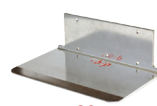
**C2**  
18" x 7 1/2"  
Extruded Aluminum  
Recessed Heel



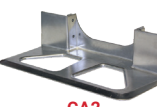
**C6**  
18" x 9"  
Extruded Aluminum  
Front Mount



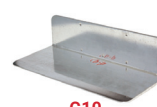
**CA1**  
14" x 7 1/2"  
Cast  
Recessed Heel



**C3**  
14" x 7 1/2"  
Extruded Aluminum  
Rear Mount



**CA2**  
18" x 7 1/2"  
Cast  
Recessed Heel



**C10**  
20" x 9"  
Extruded Aluminum  
Front Mount



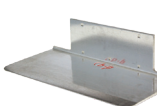
**C29**  
14" x 7 1/2"  
Steel  
Recessed Heel



**C9**  
20" x 12"  
Extruded Aluminum  
Front Mount



**C28**  
18" x 7 1/2"  
Steel  
Recessed Heel



**C5**  
18" x 7 1/2"  
Extruded Aluminum  
Rear Mount



**D6SS**  
10" x 3"  
Carefree®, No Flat  
2 Year Warranty  
Precision Bearings



**D12**  
8" x 1 5/8"  
Rubber on Aluminum,  
Offset Hub



**D6**  
10" x 3"  
Carefree®,  
No Flat Solid Foam,  
Non-Marking  
2 Year Warranty



**D5**  
10" x 3 1/2"  
4 Ply Pneumatic,  
2 Pc. Steel Hub,  
Precision bearings



**D15**  
10" x 2 1/8"  
Balloon Cushion,  
Poly Hub, No Flat  
Gray, Non-Marking



**D5G**  
10" x 3 1/2"  
D5 in Gray Color,  
Non-Marking  
Precision Bearings



**D16**  
8" x 2 1/8"  
Balloon Cushion,  
Poly Hub, No Flat  
Gray, Non-Marking



**D5S**  
10" x 3 1/2"  
D5 No Flat  
with Slime Sealant  
Precision Bearings



**D2**  
10" x 2 1/2"  
Semi-Pneumatic  
Solid Rubber  
No Flat



**D5F**  
10" x 3 1/2"  
D5 Foam-Filled  
No Flat  
Precision Bearings

### E - ACCESSORIES



**E1E**  
Extruded Aluminum "Ergo"  
Stair Climbers - More vertical  
geometry goes up/down stairs  
easier than traditional angle.



**E1L**  
Extruded Aluminum  
Stair Climbers - Reversible  
1/2" wear strips outlast  
others by 5 times.



**E1C**  
Cast Aluminum  
Stair Climbers  
w/Replaceable  
Wear Strips



**8218-002**  
Accessory Bag  
Pocket will hold a  
#10 can. Flap helps  
protect contents.



**E9**  
Beer Keg Hook for  
Sankey type 1/2 barrel.



**E47**  
Retractable pull out bar.  
Eliminates using foot  
and springs back in to  
place when done.



**E60**  
60" frame extension.  
Also available in 52",  
55", and 68" heights.



**E62S**  
62" tubular frame  
extension with 2 straps.  
68" also available.  
Heat Treated.



# CONVERTIBLE HAND TRUCKS



**B&P MANUFACTURING**

Engineered Delivery Products

## ***Liberator***

### FEATURES:

**BLACK POWDER** coated slide/swivel tubes, helps to eliminate sticking when placing into up & down positions.

**FRAMES HAVE** 4-sided, ribbed cross members and extra wide logo channel for rigidity and strength.

**AVIATION GRADE** rivets prevent frame from loosening up.

**HEAVY DUTY**, high quality TPR casters with longer lasting bearing and metal wing-brake standard on one side.

**EXTRUDED WHEEL** brackets are guaranteed for life to never crack or break.

**LOCK BAR** brackets have roll pins and cotter pins versus thin spring clips for superior strength and reliability.

**DECK** options available.

**AVAILABLE** in high and low capacity.

**EXCLUSIVE 2-YEAR WARRANTY!**



**OUR CONVERTIBLES ARE THE STRONGEST AND MOST RELIABLE TRUCKS EVER BUILT. GUARANTEED!**



[bpsales@bpmfg.com](mailto:bpsales@bpmfg.com)



(800) 334-7141



[bpmfg.com](http://bpmfg.com)



# CONVERTIBLE DECK OPTIONS



**B&P MANUFACTURING**

Engineered Delivery Products

## STANDARD DECKS:

**HIGH IMPACT** 1/8" 5052-H32 aluminum is durable and lightweight.

**KEEP SMALL** packages/objects from falling through openings in frame.

**LESS** trips and improved efficiency with extra wide 18" deck option!

**CHOICE** of snap-on or permanent riveted on design.

**WILL FIT** on some other brands of convertibles.



## ADDITIONAL FEATURES FOR PERFORATED DECKS:



**NEARLY 35%** lighter than a solid deck.

**PROVIDES** traction to reduce sliding of packages.

**ALLOWS** accidental spillage from broken product to flow through, reducing saturation of packaging.

**AVAILABLE** only as a permanent riveted on design.

**CAN BE ADDED ON EXISTING  
CONVERTIBLES!**

***Liberator***



[bpsales@bpmfg.com](mailto:bpsales@bpmfg.com)



(800) 334-7141



[bpmfg.com](http://bpmfg.com)



# B&P LIBERATOR CURB RAMPS



**B&P MANUFACTURING**  
Engineered Delivery Products



## ***Liberator***

### FEATURES:

---

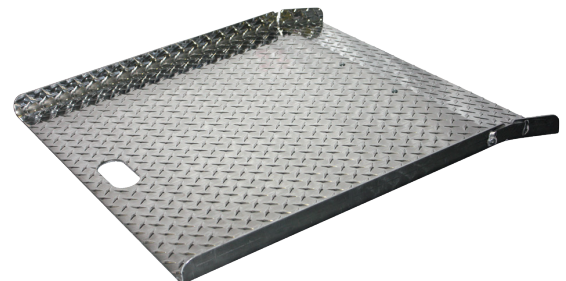
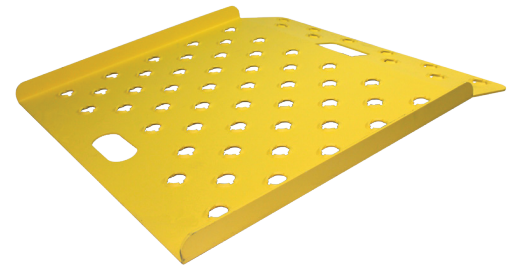
**RAISED** beveled holes punched with an "X" pattern  
for superior traction, even when wet.

**INTEGRATED STOPS** keep the ramp stationary  
on curbs.

**LIGHTER**, stronger, and safer than all other  
aluminum curb ramps.

**OPTIONAL** safety yellow helps prevent being  
tripped on or run over by pedestrians.

**EXCLUSIVE 2-YEAR WARRANTY!**



**GET HEAVY HAND TRUCK  
LOADS OVER CURBS WITHOUT  
STRAINING YOUR BACK.**



[bpsales@bpmfg.com](mailto:bpsales@bpmfg.com)



(800) 334-7141



[bpmfg.com](http://bpmfg.com)



# HAND TRUCK DOCK BOARD



**B&P MANUFACTURING**  
Engineered Delivery Products

## FEATURES:

**BRIDGE THE GAP** between truck and dock or truck to truck.

**SPECIALLY DESIGNED** with a 1" lip to drop down into drain opening in doorway.

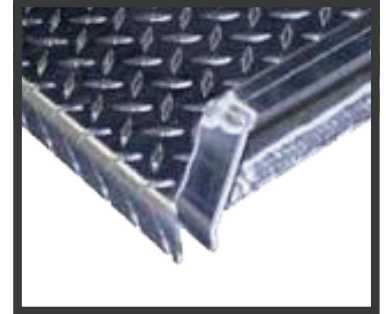
**ENGINEERED BEND** compensates for height differences between truck & dock or another truck.

**HIGH TRACTION** safety tread-plate surface.

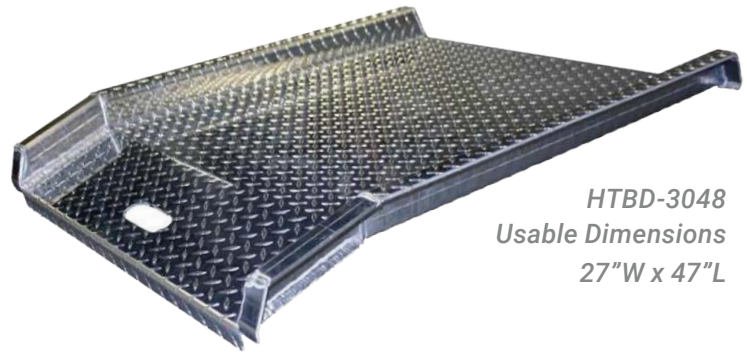
**INTEGRATED HAND SLOT** for easy, safe maneuvering.

**HIGH STRENGTH** extruded aluminum.

**UP TO 800 LB** capacity.



1" Lip Detail



HTBD-3048  
Usable Dimensions  
27"W x 47"L

PART NUMBER	WIDTH x LENGTH	THICKNESS	CAPACITY	WEIGHT
HTDB-2860	28" x 60"	3/16"	700 lbs	35 lbs
HTDB-2868	28" x 68"	1/4"	750 lbs	52 lbs
HTDB-3048	30" x 48"	3/16"	800 lbs	30 lbs
HTDB-3068	30" x 68"	1/4"	750 lbs	55 lbs
HTDB-3260	32" x 60"	3/16"	700 lbs	40 lbs

**EXCLUSIVE 2-YEAR WARRANTY!**

**Liberator**



[bpsales@bpmfg.com](mailto:bpsales@bpmfg.com)



(800) 334-7141



[bpmfg.com](http://bpmfg.com)



## FEATURES:

- ▶ **COMPACT** design allows for easy storage without giving up strength.
- ▶ **BLACK** powder coated slide/swivel tubes, help to eliminate sticking when placing into up and down positions.
- ▶ **STANDARD** 18" x 7½" extruded aluminum nose plate with cutouts, swivel-arm, wing brake casters, and 30" folding nose that doubles as the second handle.
- ▶ **ALUMINUM** shelves are lightweight, powder coated black to resist tarnishing, and carpeted to help protect sensitive equipment.
- ▶ **SHELVES** hold up to 200 lbs and allow to mix and match sizes. Includes safety pins to ensure shelves stay in place while in use.
- ▶ **OPTIONAL** heavy-duty 8" wheel kit features twist knobs that apply pressure keeping the caster plate secure and is removable for easy, lowprofile storage. *Substitutes swing-arm and casters.*
- ▶ **SUBSTITUTE** bottom shelf for solid deck with casters.
- ▶ *Heavy-duty wheel kit not available with this option.*
- ▶ **CHOICE** of D5, D6, or D6SS wheels.
- ▶ **EXCLUSIVE 2-YEAR WARRANTY!**

**CONSTRUCTED FROM THE SAME COMPONENTS  
AS OUR CONVERTIBLES, STUDIO CARTS ARE  
BUILT FOR STRENGTH AND DURABILITY.**

## ***Liberator***



# PLATFORM TRUCKS



**B&P MANUFACTURING**  
Engineered Delivery Products

## FEATURES:

- ▶ **FORMED DECK** design is lightweight and strong, eliminating warping and waving.
- ▶ **HEAVY DUTY WELDED** deck design provides resistance to twisting and deck curling.
  - Optional carpeted deck.*
  - Optional full perimeter rubber bumper will not peel up like glued designs.*
- ▶ **BOTH** are extremely durable with a large selection of handles and caster kits to suit your application.
- ▶ **AVAILABLE** with powder coat.
- ▶ **DECKS** are available in an array of sizes & in tread or smooth plate.
- ▶ **EACH** has a 2,500 lb capacity depending on caster selection.
- ▶ **2-YEAR WARRANTY!**



DECK TYPE/SIZE	24"x36"	24"x48"	24"x60"	30"x48"	30"x60"	30"x72"	36"x48"	36"x60"	36"x72"
FORMED DECK	✓	✓		✓	✓	✓	✓		
WELDED DECK	✓	✓	✓	✓	✓	✓	✓	✓	✓

## HANDLE & CASTER OPTIONS:



150



155



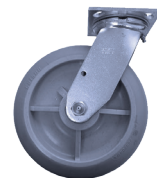
160



165



650



850



820



[bpsales@bpmfg.com](mailto:bpsales@bpmfg.com)



(800) 334-7141



[bpmfg.com](http://bpmfg.com)





**(800) 334-7141**  
**(231) 775-2229**



**[bpsales@bpmfg.com](mailto:bpsales@bpmfg.com)**



**8051 E. Boon Rd.**  
**Cadillac, MI 49601, USA**



**[www.bpmfg.com](http://www.bpmfg.com)**

Facility Maintenance  
Product Catalog

Rev: 10-2024



**B&P MANUFACTURING**

**Engineered Delivery Products**

Small Business | ISO 9001:2015 Registered QMS