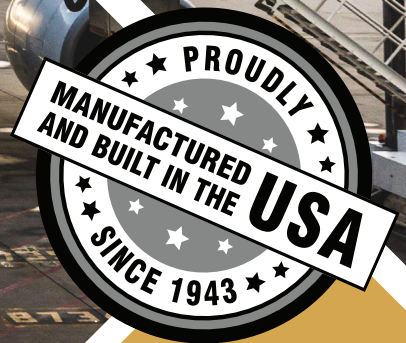




B&P MANUFACTURING

Engineered Delivery Products

Aviation Ground Support
Equipment Catalog
2025



www.bpmfg.com

LIBERATOR HAND TRUCKS



B&P MANUFACTURING

Engineered Delivery Products

BACKED BY 2-YEAR WARRANTY!

Liberator

A - HANDLES

- ▶ Large selection.
- ▶ Heat treated handle line available, provides greater strength & abrasion resistance.

B - FRAMES

- ▶ 600 lb. capacity vs. competitors 500 lb.
- ▶ 4-sided ribbed cross members and top logo channel for rigidity & strength.
- ▶ Logo channel allows room for custom company decal.
- ▶ Assembled with aviation grade rivets.

C - SIDE CHANNEL REINFORCEMENTS

- ▶ Bolted at top and bottom, spreading out stress to resist cracking or bending of frames.

D - POWDER COATING

- ▶ Frame & stair climber powder coating options in red, blue, green, orange, pink & black.

E - STAIR CLIMBERS

- ▶ Extruded much more durable than cast.
- ▶ Extra thick reversible bolt on wear strips outlast all others many times over.
- ▶ E1E Ergo Stair Climber to maneuver stairs with less effort.

F - NOSE PLATE BRACKETS

- ▶ B&P's extruded aluminum solid brackets will not crack or break.
- ▶ Beveled to inside of frame to eliminate gaps which allow for play & loosening up over time.

G - WHEEL BRACKETS

- ▶ Axle brackets are made from high-strength extruded aluminum, and are not castings. Guaranteed for life!

H - WHEELS

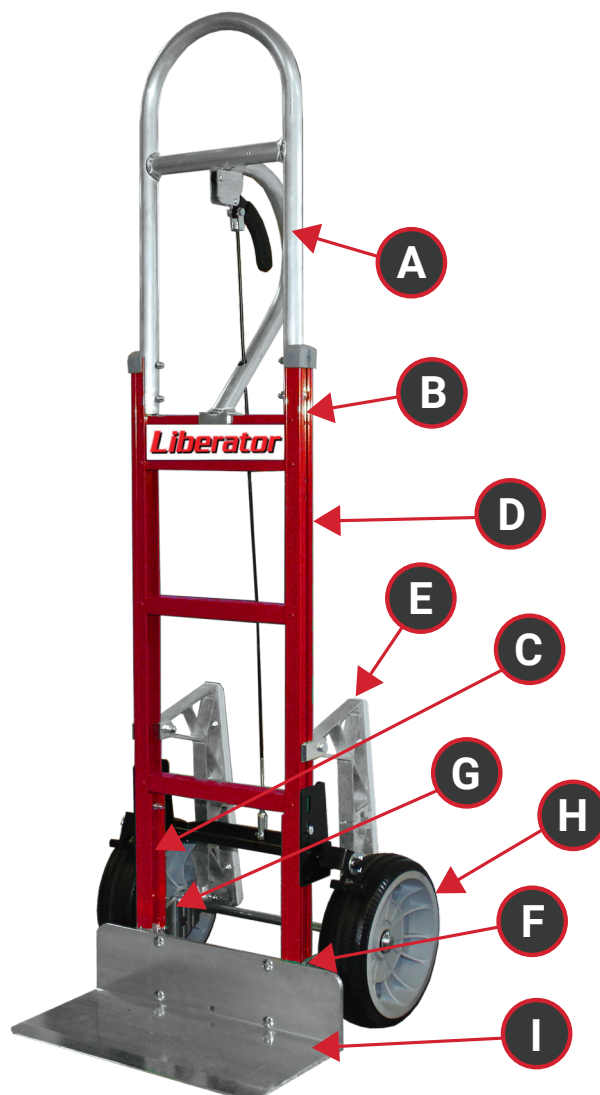
- ▶ Several different wheel options are available for your specific application.
- ▶ From premium pneumatics to traditional flat free, we offer only the best wheels available.

I - NOSE PLATES

- ▶ 600 lb. capacity extruded aluminum.
- ▶ Many options for widths & lengths.
- ▶ Beveled leading edge.
- ▶ 500 lb. capacity cast aluminum available.

Add on disc or tread brakes when you need total stopping power.

Find additional options in our digital catalog on our resources page.



bpsales@bpmfg.com



(800) 334-7141



bpmfg.com



BUILD YOUR HAND TRUCK

CUSTOMIZING IS AS EASY AS A-B-C-D-E

Liberator

A - HANDLE

B - FRAME

C - NOSE PLATE

D - WHEELS



A7
Vertical Grip
52" high



A16
Flared Double, Vertical
Loop Grips 60" high



A8
Vertical Grip at 52"
60" high



A57S
Double Vertical Loop
Grip w/ 2 cross
members 62" high



A9
Vertical Grip at 52"
68" high



A56S
Double Vertical
Loop Grip
62" high



A11
Double Loop w/ U-Brace



A1
Standard Loop



A41
Square Loop
w/ Angled Double
Grips 55" high



A14
Standard Loop
w/ U-Brace &
Comfort Sleeve



A42
Square Loop
w/ Angled Double
Grips 62" high



A2
Standard Loop
w/ U-Brace



A3-A4-A5
Single Pin Grip at 46"
A3: 52" high
A4: 55" high
A5: 62" high



A12
Single Pin
52" high

Additional handle options are available.



B1
Straight Back



B4
Curve Back, w/1 Strap



B2
Straight Back
w/1 Vertical Strap



B5
Curve Back,
No Strap



B3
Straight Back
w/2 Vertical Straps



B5K
Curve Back,
w/Sliding Keg Hook



B6
Combination Back,
2 Straight, 1 Curved



B7
Combination Back,
1 Straight, 2 Curved

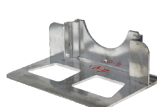


B10
Straight Back. No Logo
Channel. 500 lb. cap.

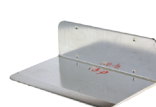


B1#02
Straight back with
red powder coat.

Powder Coat color options include:
Blue, Black, Red, Green, Orange & Pink.



C1
14" x 7 1/2"
Extruded Aluminum
Recessed Heel



C4
14" x 9"
Extruded Aluminum
Front Mount



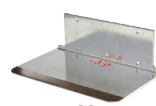
C2
18" x 7 1/2"
Extruded Aluminum
Recessed Heel



C6
18" x 9"
Extruded Aluminum
Front Mount



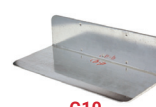
CA1
14" x 7 1/2"
Cast
Recessed Heel



C3
14" x 7 1/2"
Extruded Aluminum
Rear Mount



CA2
18" x 7 1/2"
Cast
Recessed Heel



C10
20" x 9"
Extruded Aluminum
Front Mount



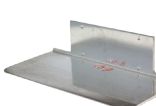
C29
14" x 7 1/2"
Steel
Recessed Heel



C9
20" x 12"
Extruded Aluminum
Front Mount



C28
18" x 7 1/2"
Steel
Recessed Heel



C5
18" x 7 1/2"
Extruded Aluminum
Rear Mount



D6SS
10" x 3"
Carefree®, No Flat
2 Year Warranty
Precision Bearings



D12
8" x 1 5/8"
Rubber on Aluminum,
Offset Hub



D6
10" x 3"
Carefree®,
No Flat Solid Foam,
Non-Marking
2 Year Warranty



D5
10" x 3 1/2"
4 Ply Pneumatic,
2 Pc. Steel Hub,
Precision bearings



D15
10" x 2 1/8"
Balloon Cushion,
Poly Hub, No Flat
Gray, Non-Marking



D5G
10" x 3 1/2"
D5 in Gray Color,
Non-Marking
Precision Bearings



D16
8" x 2 1/8"
Balloon Cushion,
Poly Hub, No Flat
Gray, Non-Marking



D5S
10" x 3 1/2"
D5 No Flat
with Slime Sealant
Precision Bearings



D2
10" x 2 1/2"
Semi-Pneumatic
Solid Rubber
No Flat



D5F
10" x 3 1/2"
D5 Foam-Filled
No Flat
Precision Bearings

E - ACCESSORIES



E1E
Extruded Aluminum "Ergo"
Stair Climbers - More vertical
geometry goes up/down stairs
easier than traditional angle.



E1L
Extruded Aluminum
Stair Climbers - Reversible
1/2" wear strips outlast
others by 5 times.



E1C
Cast Aluminum
Stair Climbers
w/Replaceable
Wear Strips



8218-002
Accessory Bag
Pocket will hold a
#10 can. Flap helps
protect contents.



E9
Beer Keg Hook for
Sankey type 1/2 barrel.



E47
Retractable pull out bar.
Eliminates using foot
and springs back in to
place when done.



E60
60" frame extension.
Also available in 52",
55", and 68" heights.



E62S
62" tubular frame
extension with 2 straps.
68" also available.
Heat Treated.



CONVERTIBLE HAND TRUCKS



B&P MANUFACTURING

Engineered Delivery Products



Liberator

FEATURES:

BLACK POWDER coated slide/swivel tubes, helps to eliminate sticking when placing into up & down positions.

FRAMES HAVE 4-sided, ribbed cross members and extra wide logo channel for rigidity and strength.

AVIATION GRADE rivets prevent frame from loosening up.

HEAVY DUTY, high quality TPR casters with longer lasting bearing and metal wing-brake standard on one side.

EXTRUDED WHEEL brackets are guaranteed for life to never crack or break.

LOCK BAR brackets have roll pins and cotter pins versus thin spring clips for superior strength and reliability.

DECK options available.

AVAILABLE in high and low capacity.

EXCLUSIVE 2-YEAR WARRANTY!



OUR CONVERTIBLES ARE THE STRONGEST AND MOST RELIABLE TRUCKS EVER BUILT. GUARANTEED!



bpsales@bpmfg.com



(800) 334-7141



bpmfg.com



CONVERTIBLE DECK OPTIONS



B&P MANUFACTURING

Engineered Delivery Products

STANDARD DECKS:

HIGH IMPACT 1/8" 5052-H32 aluminum is durable and lightweight.

KEEP SMALL packages/objects from falling through openings in frame.

LESS trips and improved efficiency with extra wide 18" deck option!

CHOICE of snap-on or permanent riveted on design.

WILL FIT on some other brands of convertibles.



ADDITIONAL FEATURES FOR PERFORATED DECKS:



NEARLY 35% lighter than a solid deck.

PROVIDES traction to reduce sliding of packages.

ALLOWS accidental spillage from broken product to flow through, reducing saturation of packaging.

AVAILABLE only as a permanent riveted on design.

**CAN BE ADDED ON EXISTING
CONVERTIBLES!**

Liberator



bpsales@bpmfg.com



(800) 334-7141



bpmfg.com



B&P LIBERATOR CURB RAMPS



B&P MANUFACTURING
Engineered Delivery Products



Liberator

FEATURES:

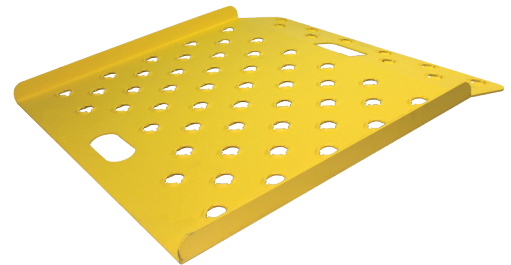
RAISED beveled holes punched with an "X" pattern
for superior traction, even when wet.

INTEGRATED STOPS keep the ramp stationary
on curbs.

LIGHTER, stronger, and safer than all other
aluminum curb ramps.

OPTIONAL safety yellow helps prevent being
tripped on or run over by pedestrians.

EXCLUSIVE 2-YEAR WARRANTY!



**GET HEAVY HAND TRUCK
LOADS OVER CURBS WITHOUT
STRAINING YOUR BACK.**



bpsales@bpmfg.com



(800) 334-7141



bpmfg.com



HAND TRUCK DOCK BOARD



B&P MANUFACTURING
Engineered Delivery Products

FEATURES:

BRIDGE THE GAP between truck and dock or truck to truck.

SPECIALLY DESIGNED with a 1" lip to drop down into drain opening in doorway.

ENGINEERED BEND compensates for height differences between truck & dock or another truck.

HIGH TRACTION safety tread-plate surface.

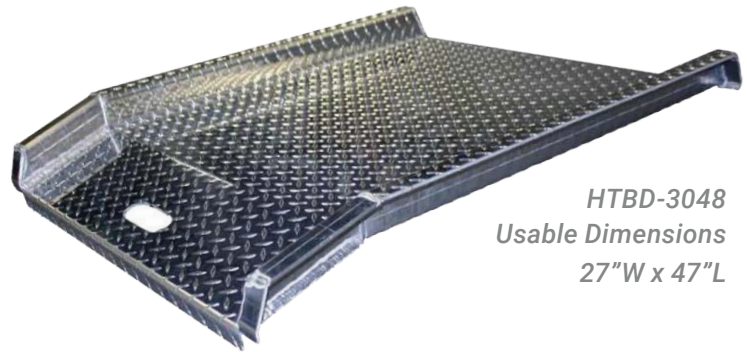
INTEGRATED HAND SLOT for easy, safe maneuvering.

HIGH STRENGTH extruded aluminum.

UP TO 800 LB capacity.



1" Lip Detail



HTBD-3048
Usable Dimensions
27"W x 47"L

PART NUMBER	WIDTH x LENGTH	THICKNESS	CAPACITY	WEIGHT
HTDB-2860	28" x 60"	3/16"	700 lbs	35 lbs
HTDB-2868	28" x 68"	1/4"	750 lbs	52 lbs
HTDB-3048	30" x 48"	3/16"	800 lbs	30 lbs
HTDB-3068	30" x 68"	1/4"	750 lbs	55 lbs
HTDB-3260	32" x 60"	3/16"	700 lbs	40 lbs

EXCLUSIVE 2-YEAR WARRANTY!

Liberator



bpsales@bpmfg.com



(800) 334-7141



bpmfg.com





CARPETED HAND TRUCK:

- ▶ Carpeted back panel.
- ▶ Loop handle with 52" extension.
- ▶ Garment hanger hook.
- ▶ Cast 14" x 7½" nose plate.
- ▶ 8" wheels (D12).
- ▶ 30" carpeted folding nose, (300 lb. capacity).

A1-B1-CA2-D12-E52-CB-E3RC

CARPETED DECK PLATFORM TRUCK WITH FULL PROTECTIVE BUMPER:

- ▶ Extra rugged box frame construction provides superior strength and resistance to twisting and warping.
- ▶ Engineered handle pockets keep handles in place while in use - easily removable for storage.
- ▶ Exclusive side rail material structurally incorporates the 1/8" deck into place for resistance to curling and exceptional torsional strength and allows for installation of full protective bumper.

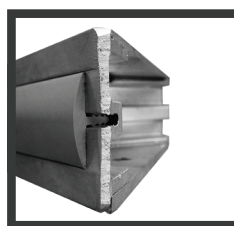


Handles are 29.5" high
with 18" panel

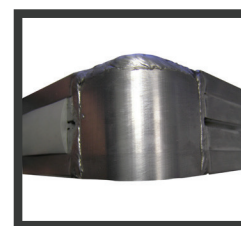
8"x2" or 6"x2" TPR non-marking
casters, 2 swivel/2 rigid

PT-3072S-165-165-850-C-310

Side rail detail



Handle pocket detail



Full 1/4" heavy
duty caster plates
for durability



PLATFORM TRUCKS



B&P MANUFACTURING
Engineered Delivery Products

FEATURES:

- ▶ **FORMED DECK** design is lightweight and strong, eliminating warping and waving.
- ▶ **HEAVY DUTY WELDED** deck design provides resistance to twisting and deck curling.
 - Optional carpeted deck.*
 - Optional full perimeter rubber bumper will not peel up like glued designs.*
- ▶ **BOTH** are extremely durable with a large selection of handles and caster kits to suit your application.
- ▶ **AVAILABLE** with powder coat.
- ▶ **DECKS** are available in an array of sizes & in tread or smooth plate.
- ▶ **EACH** has a 2,500 lb capacity depending on caster selection.
- ▶ **2-YEAR WARRANTY!**



DECK TYPE/SIZE	24"x36"	24"x48"	24"x60"	30"x48"	30"x60"	30"x72"	36"x48"	36"x60"	36"x72"
FORMED DECK	✓	✓		✓	✓	✓	✓		
WELDED DECK	✓	✓	✓	✓	✓	✓	✓	✓	✓

HANDLE & CASTER OPTIONS:



150



155



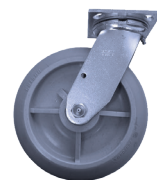
160



165



650



850



820



bpsales@bpmfg.com



(800) 334-7141



bpmfg.com





(800) 334-7141
(231) 775-2229



bpsales@bpmfg.com



8051 E. Boon Rd.
Cadillac, MI 49601, USA



www.bpmfg.com

**Aviation Ground Support
Equipment Catalog**

Rev: 10-2024



B&P MANUFACTURING

Engineered Delivery Products

Small Business | ISO 9001:2015 Registered QMS