

# **b&p Manufacturing**

Engineered Delivery Products



20 | 22

MATERIAL HANDLING AND  
DELIVERY PRODUCTS CATALOG



# **b&p Manufacturing**

*Engineered Delivery Products*

**HISTORY:** B&P Manufacturing has been engineering and building the highest quality material handling products since 1943 where we began as Brooks and Perkins. Since then our products and processes have seen dramatic changes in order to keep in step with rapid advances in the industries our products serve.

**PURCHASING:** Our streamlined process and inventory levels of both raw materials and completed goods are expertly maintained. Whether you need one handle or 5,000 hand trucks, we respond quickly to your needs.

**ENGINEERING:** By continuing to work with those who utilize our products, including drivers all over the country, we are able to engineer our products to be more ergonomically correct, reducing driver fatigue and risk of injury. Our products allow drivers to deliver more product, with increased efficiency. Quite simply, our goal is to solve our customers toughest delivery challenges with the highest quality products made by our dedicated team of men and women here in Northern Michigan.

**SALES:** Not sure what product best fits your needs? Do you have a customized concept? Let our experienced Sales Team guide you through the process to not only educate you about our offerings but also assist you in finding the right product for the task at hand.












**CUSTOMER SERVICE:** Our knowledgeable Customer Service team is here to assist you with any questions that arise before, during and after you place your order and take delivery. Let us know how we can help.

**Customer Service**  
800-334-7141

**Website:** [www.bpmfg.com](http://www.bpmfg.com)  
**Email:** [bpsales@bpmfg.com](mailto:bpsales@bpmfg.com)

**8051 East 34 Rd.**  
Cadillac, MI 49601

# TABLE OF CONTENTS

 PG 2-3 FEATURED HAND TRUCKS	 PG 4-13 LIBERATOR HAND TRUCKS	 PG 14-15 LIBERATOR BRAKE TYPES	 PG 16-17 CONVERTIBLE HAND TRUCKS	 PG 18-19 SNACK/BAKERY HAND TRUCKS	 PG 20-21 SPECIALTY HAND TRUCKS
 PG 22-27 CRUSADER HAND TRUCKS	 PG 28-31 ROUTE DELIVERY CARTS	 PG 32-34 CURB & WALK RAMPS	 PG 35-36 DOCK & WAREHOUSE	 PG 37 B&P 2+1 WARRANTY	

## B&P GRAND PROMISE

B&P Manufacturing truly cares about our customers, our products, our community, and our employees.

We hold ourselves accountable to a high level of standards in all aspects of our business from start to completion, including after sales service. Our team of professionals in Cadillac, MI is comprised of dedicated experts who bring unique skill sets in their respective fields. At B&P, we take great pride in designing, engineering, and building American made fabricated products of the highest level of quality and in value.

Companywide, we strive to be philanthropists within our local community, a trusted corporate partner, and conduct business with integrity. We believe strongly in moral and ethical best practices and at the end of the day, we are a company that ensures we do the right thing for our customers and our company!

Our Grand Promise is a declaration of assurance that as we grow and evolve, B&P Manufacturing will continue to build upon our strong foundation and relationships with our valued partners and community.

### CERTIFICATIONS/AWARDS/MEMBERSHIPS

ISO 9001:  
2015 Certified  
QMS



*Helping you achieve your supplier diversity goals with the best quality standards.*



# POPULAR CONFIGURATIONS

The Liberator sets the standard for Modular Aluminum Hand Trucks in performance, reliability, and reduced operation costs. Choose from the models shown or customize your own from components on pages 4-13.

## Straight Hand Trucks



## Brake Hand Trucks



## Curved Hand Trucks





Our exclusive, no nonsense two-year warranty on all Hand Trucks and full line of interchangeable parts sets another standard in our commitment to provide you with the best Hand Trucks and replacement parts available.

## Convertible Hand Trucks



UP NEXT

## BUILD A LIBERATOR HAND TRUCK



**A**  
HANDLE

**B**  
FRAME

**C**  
NOSE PLATE

**D**  
WHEELS

**E**  
ACCESSORIES

# BUILD A LIBERATOR HAND TRUCK

## A HANDLE



Part #	Standard Loop	Overall Height
A1	Standard Loop	50"
A13	Standard Loop w/ Comfort Sleeve	50"
A2	Standard Loop w/ U-Brace	50"
A14	Standard Loop w/ U-Brace & Comfort Sleeve	50"
A37	Standard Loop, Square Top w/ Comfort Sleeve	50"



Part #	Flared Double Grips	Overall Height
A11	Standard Double Grip w/ U-Brace	48"
A40	Square Loop w/ Flared Double Grips & Cross Member	● 52"
A41	Square Loop w/ Flared Double Grips & Cross Member	● 55"
A42	Square Loop w/ Flared Double Grips & 2 Cross Members	● 62"
A19	Square Loop w/ Flared Double Grips & No Cross Members	● 62"

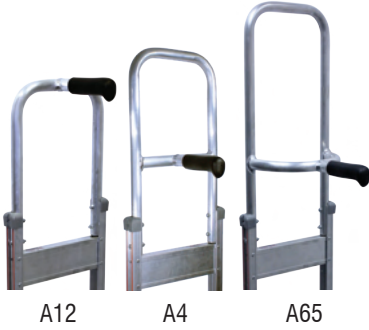


Part #	Straight Loop, Vertical Grip	Overall Height
A7	Straight Loop, Vertical Grip	52"
A10	Straight Loop, Vertical Grip for Curved Frames	52"
A8	Straight Loop, Vertical Grip at 52"	60"
A25	Straight Loop, Vertical Grip at 52" for Curved Frames	60"
A51	Straight Loop, Vertical Grip & 2 Curved Cross Members	● 60"
A9	Straight Loop, Vertical Grip at 52"	68"



Part #	Square Loop with Horizontal Grip	Overall Height
A52	Square Loop w/ Horizontal Grip, Brace & 2 Cross Members	● 62"
A67	Square Loop w/ Horizontal Grip, Brace, 2 Cross Members & Pull Back Loop	● 62"
A67M	Square Loop w/ Horizontal Grip, Brace, 2 Cross Members & 2 Pull Back Loops	● 62"

**Key**  
 ● — Heat Treated  
 ● — Not Compatible w/ Brakes



Part #	Square Loop, Single Pin Grip	Overall Height
A12	Square Loop, Single Pin Grip	52"
A3	Square Loop, Single Pin Grip at 46"	52"
A4	Square Loop, Single Pin Grip at 46"	55"
A49	Square Loop w/ Curved Cross Member, Single Pin Grip at 46"	55"
A5	Square Loop, Single Pin Grip at 46"	62"
A65	Square Loop w/ Loop Cross Member, Single Pin Grip at 46"	62"
A64	Square Loop w/ Straight & Loop Cross Member, Single Pin at 46"	62"
A6	Square Loop, Single Pin Grip at 46"	68"



Part #	Square Loop with Double Vertical Grips	Overall Height
A47	Square Loop w/ Double Vertical Grips & Cross Member	55"
A31S	Square Loop w/ Double Vertical Grips	55"
A56S	Square Loop w/ Double Vertical Grips	62"
A57S	Square Loop w/ Double Vertical Grips, & 2 Cross Members	62"
A57SM*	Square Loop w/ Double Vertical Grips, 2 Cross Members & Top Pin	62"
A69S	Square Loop w/ Double Vertical Grips, 2 Cross Members & Pull Back Loop	62"
A66	Square Loop w/ Double Vertical Grips, Cross Member & Single Pin Grip at 46"	62"
A70S	Square Loop w/ Double Vertical Grips, 3 Cross Members & Pull Back Loop	68"

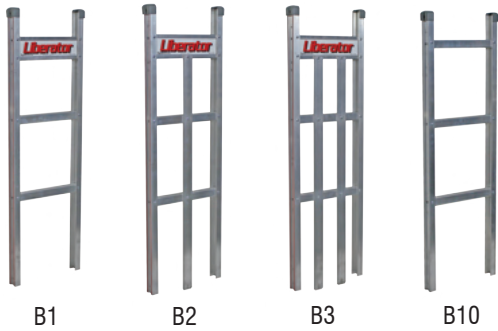
\* Height is w/out pin



Part #	Flared Double Loop Grips	Overall Height
A15	Straight Loop w/ Flared Double Vertical Loop Grips	55"
A16	Straight Loop w/ Flared Double Vertical Loop Grips	60"



# B FRAME



Part #	Straight Back
B1	Standard Straight Back, No Strap
B2	Straight Back w/ 1 Vertical Strap
B3	Straight Back w/ 2 Vertical Straps
B10*	Straight Back, No Logo Channel & No Red Striping

\* B10 frame has a **500 lb** capacity



Part #	Curved Back
B4	Curved Back w/ 1 Vertical Strap
B5	Curved Back, No Vertical Strap
B5K	Curved Back w/ Sliding Keg Hook
B5MK	Curved Back w/ Adjustable Sliding Keg Hook



Part #	Combination Back and Ergo
B6	Combination Back w/ 2 Straight & 1 Curved
B7	Combination Back w/ 1 Straight & 2 Curved
B17*	Straight Back, Ergo
B18*	Straight Back, Ergo w/ 1 Vertical Strap

\* Ergo Frames add 6 5/16" to overall hand truck height



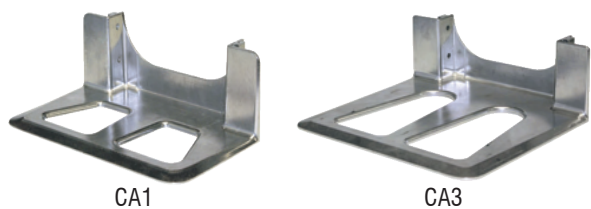
Part #	Severe Duty
B1SD	Severe Duty, Straight Back, No Strap
B2SD	Severe Duty, Straight Back w/ 1 Vertical Strap
B17SD*	Severe Duty, Straight Back Ergo
B18SD*	Severe Duty, Straight Back Ergo w/ 1 Vertical Strap

\* Ergo frames add 6 5/16" to overall hand truck height

# NOSE PLATE

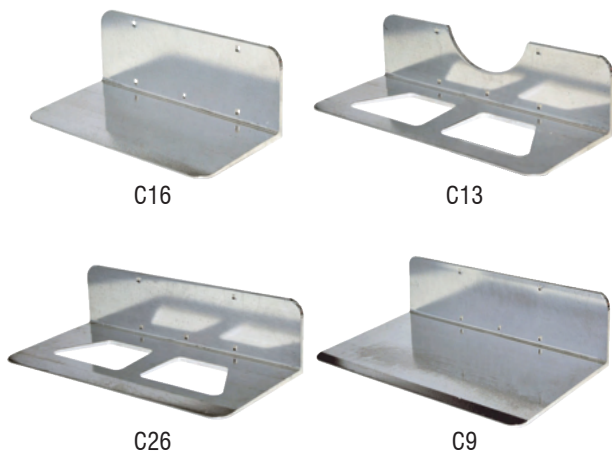


Part #	Extruded Recessed Heel	Width x Depth
C1	Recessed Heel w/ Cutouts, Extruded Aluminum	14" x 7.5"
C19	Recessed Heel, Extruded Aluminum	14" x 7.5"
C7	Recessed Heel w/ Cutouts, Extruded Aluminum	14" x 10.5"
C2	Recessed Heel w/ Cutouts, Extruded Aluminum	18" x 7.5"
C20	Recessed Heel, Extruded Aluminum	18" x 7.5"
C15	Recessed Heel w/ Cutouts, Extruded Aluminum	18" x 10.5"



Part #	Cast Recessed Heel	Width x Depth
CA1*	Recessed Heel w/ Cutouts, Cast	14" x 7.5"
CA2*	Recessed Heel w/ Cutouts, Cast	18" x 7.5"
CA3*	Recessed Heel w/ Cutouts, Cast	14" x 12"

\* All cast aluminum nose plates have a **500 lb** capacity and **1 year** warranty



Part #	Extruded Front Mount	Width x Depth
C16	Front Mount, Extruded Aluminum	14" x 7.5"
C12	Front Mount w/ Cutouts, Extruded Aluminum	14" x 7.5"
C4*	Front Mount, Extruded Aluminum	14" x 9"
C8	Front Mount, Extruded Aluminum	16" x 12"
C17	Front Mount, Extruded Aluminum	18" x 7.5"
C13	Front Mount w/ Cutouts, Extruded Aluminum	18" x 7.5"
C6*	Front Mount, Extruded Aluminum	18" x 9"
C26	Front Mount w/ Cutouts, Extruded Aluminum	18" x 9"
C14	Front Mount, Extruded Aluminum	18" x 12"
C10*	Front Mount, Extruded Aluminum	20" x 9"
C9*	Front Mount, Extruded Aluminum	20" x 12"

\* Available w/ countersunk noseplate bolts

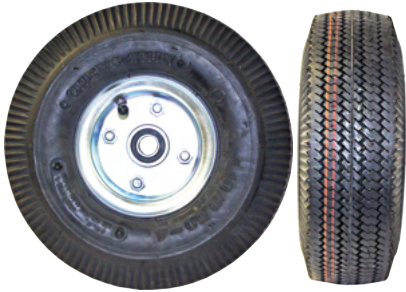


Part #	Extruded Rear Mount	Width x Depth
C3	Rear Mount, Extruded Aluminum	14" x 7.5"
C5	Rear Mount, Extruded Aluminum	18" x 7.5"



Part #	Steel Recessed or Front Mount	Width x Depth
C29	Recessed Mount, Steel	14" x 7.5"
C28	Recessed Mount, Steel	18" x 7.5"
C21	Front Mount, Steel	14" x 9"
C22	Front Mount, Steel	18" x 9"

# D WHEELS



Part #	Pneumatic Wheel	Diameter x Width	Weight
D5	4 Ply Pneumatic, 3 pc. Steel Hub, Precision Bearings	10" x 3.5"	4.4 lb
D5F	D5 Foam Filled - Can't Go Flat	10" x 3.5"	7.0 lb
D5S	D5 w/ Slime Sealant	10" x 3.5"	5.0 lb

**Capacity:** 350 lb per wheel

**Recommended uses:**

- Outdoor surfaces such as gravel, grass & sand
- Inclement conditions such as snow, slush or mud
- Rough or uneven surfaces
- Applications requiring superior shock absorption

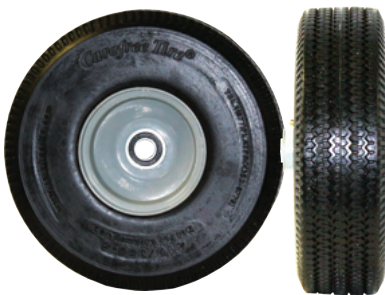


Part #	Pneumatic Wheel	Diameter x Width	Weight
D5G	D5 in Gray Color, Non-Marking	10" x 3.5"	4.4 lb

**Capacity:** 350 lb per wheel

**Recommended uses:**

- Outdoor surfaces such as gravel, grass & sand
- Inclement conditions such as snow, slush or mud
- Rough or uneven surfaces
- Applications requiring superior shock absorption



Part #	Carefree® Wheel	Diameter x Width	Weight
D6	No Flat Solid Foam, Non-Marking	10" x 3"	4.2 lb

**Capacity:** 350 lb per wheel

**Recommended uses:**

- Outdoor surfaces such as gravel, grass & sand
- Inclement conditions such as snow, slush or mud
- Rough or uneven surfaces



Part #	Pneumatic Wheel	Diameter x Width	Weight
D9	Pneumatic, 2 pc. Steel Hub	8" x 2.5"	2.9 lb

**Capacity:** 297 lb per wheel

**Recommended uses:**

- Smooth/semi smooth, hard surfaces
- General purpose





Part #	Carefree® Wheel	Diameter x Width	Weight
D6SS	Poly Hub, Non-Marking	10" x 3"	3.1 lb

Capacity: 350 lb per wheel

**Recommended uses:**

- Outdoor surfaces such as gravel, grass & sand
- Inclement conditions such as snow, slush or mud
- Rough or uneven surfaces

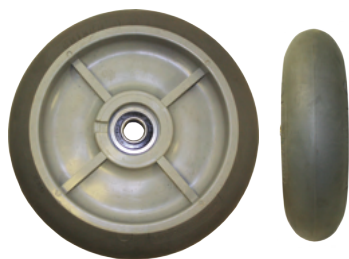


Part #	Balloon Cushion Wheel	Diameter x Width	Weight
D15	Poly Hub, Precision Bearings, Dark Gray, Non-Marking	10" x 2.125"	2.3 lb
D16	Poly Hub, Precision Bearings, Dark Gray, Non-Marking	8" x 2.125"	1.6 lb

Capacity: 350 lb per wheel

**Recommended uses:**

- Smooth/semi smooth, hard surfaces
- General purpose
- City deliveries - side walk & concrete
- Delicate floor, tile & carpet



Part #	Performance TPR Wheel	Diameter x Width	Weight
D1	High Performance, in Gray Color, Non-Marking	8" x 2"	2 lb

Capacity: 500 lb per wheel

**Recommended uses:**

- Smooth/semi smooth, hard surfaces
- General purpose



Part #	Rubber Wheel Description	Diameter x Width	Weight
D12	Mold on Rubber on Aluminum, Offset Hub	8" x 1.625"	2.1 lb

Capacity: 500 lb per wheel

**Recommended uses:**

- Smooth/semi smooth, hard surfaces
- General purpose

**Safety Note: Never exceed rated hand truck capacity (600 lb, unless otherwise noted).**

# E ACCESSORIES



E62S E68SL  
(Shown with A13 handle)

Part #	Tubular Frame Extension	Overall Height
E62S	Tubular Frame Extension w/ 2 Straps	62"
E62SL	Tubular Frame Extension w/ 2 Straps, & 1 Diagonal Loop	62"
E68S	Tubular Frame Extension w/ 2 Straps	68"
E68SL	Tubular Frame Extension w/ 2 Straps, & 1 Diagonal Loop	68"

Fits A1, A2, A11, A13, A14, A37 handles, and some competitors hand trucks



E45 E52 E60 E11  
(Shown with A1 handle)

Part #	Extruded Frame Extension	Overall Height
E45	U-Brace, Extruded Frame Extension	45"
E52	Extruded Frame Extension	52"
E55	Extruded Frame Extension	55"
E60	Extruded Frame Extension	60"
E68	Extruded Frame Extension	68"
E11	Frame Extension Foam Sleeve	N/A

Fits A1, A2, A11, A13, A14, A37 handles, and some competitors hand trucks



Part #	Keg Hook
E9*	Keg Hook for Sankey Style 1/2 Barrel

\*For curved back frames only



Part #	Frame Wings	Length x Width
E30	Standard Frame Wings	34" x 2"
E31	Standard Frame Wings, Large	45" x 2"
E30SD	Severe Duty Frame Wings	34" x 2"
E30ESD	"Ergo" Severe Duty Frame Wings, Large	40.5" x 2"



Part #	Pull Bar	Diameter
E29*	Pull Bar w/ Red Plastic Sleeve for E1L, E1E Stair Climbers	.63"

\* Not compatible w/ the combination of the E1L stair climbers and 8" wheels

### Key

- — Heat Treated
- — Not Compatible w/ Brakes



Part #	Extruded Stair Climbers
E1E	Extruded Aluminum Ergo Stair Climbers
E1L	Extruded Aluminum Stair Climbers



Part #	Cast Stair Climbers
E1C*	Cast Aluminum Stair Climbers

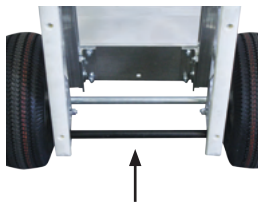
\*1 Year Warranty



Part #	Appliance Stair Climbers
E72	30" Skids, Appliance Style w/ Plastic Wear Strip



Part #	Aluminum Kick Bar	Diameter
E13	Aluminum Kick Bar for E1L Stair Climbers w/ 10" Wheels	1.49"



Part #	Steel Kick Bar	Diameter
E46	Steel Kick Bar for E1L Stair Climbers w/ 10" Wheels	.63"
E26	Steel Kick Bar for E1L Stair Climbers w/ 8" Wheels	.63"
E46E	Steel Kick Bar for E1E "Ergo" Stair Climbers	.63"



Part #	Accessory Bag	Length x Width x Depth
8218-001	Hand Truck Accessory Bag	18" x 12" x 2"
8218-002	Hand Truck Accessory Bag	18" x 12" x 3"



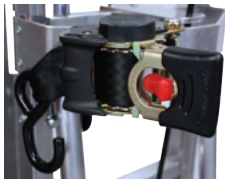
## **E** ACCESSORIES CONTINUED



Part #	Pull Back Bar
E47	Pull Back Bar for E1L Stair Climbers
E47E	Pull Back Bar for E1E "Ergo" Stair Climbers



Part #	Wheel Guards	Length x Width
E8	Wheel Guards	7.38" x 2.5"
E8L	Wheel Guards	12" x 4"



Part #	Ratchet Strap	Length x Width
E73	Retractable Ratchet Strap	10' x 2"
E75	Retractable Ratchet Strap w/ 4' Extension	14' x 2"



Part #	Fourth Wheel
E37L*	Fourth Wheel Attachment, w/ Latch

\* Not compatible with stair climbers or convertible hand trucks



E2F



E5F

Part #	Folding Noses	Capacity
E2F or E2R	Full Channel Extruded Folding Nose, 20"	300 lb
E3F or E3R	Full Channel Extruded, Folding Nose, 30"	300 lb
E4F or E4R	Tubular Folding Nose, 44"	110 lb
E5F or E5R	Tubular Folding Nose, 36"	110 lb
E6F or E6R	Tubular Folding Nose, 30"	110 lb
E10F or E10R	Tubular Folding Nose, 34"	110 lb

Order "F" for use with front mount nose plates  
Order "R" for use with recessed heel or rear mount nose plates



NA



E44E

Part #	Narrow Aisle Configuration
NA	Narrow Aisle Brackets
E44E	Narrow Aisle Stair Climbers



S-500

S-502

S-503

Part #	Standard Capacity Hand Trucks	Weight	Capacity
S-500	A1-B10-C12-D16	17 lb	500 lb
S-502	A1-B10-C12-D15	19 lb	500 lb
S-503	A11-B10-C13-D5	25 lb	500 lb

**Show Your Patriotism and Support**  
 By Using a Red, White and Blue  
 "American Pride" Hand Truck!  
*Available in most configurations.*



Combine your company decal with a high quality powder coated frame!

B&P Powder Coating allows you to customize your hand truck to help deter theft, build brand recognition, and increase visibility. Choose from 6 colors to customize your frame, side channels, and stair climbers.

**Color Options**

-  Blue (#01)
-  Red (#02)
-  Black (#03)
-  Pink (#04)
-  Green (#06)
-  Orange (#07)



Regional brands and distributor decals available for a fee.

# LIBERATOR BRAKE TYPES



Part #	Tread Brakes
<b>BTC</b>	Brakes, Tread w/ Cable Lever
<b>BTT</b>	Brakes, Tread w/ T-Rod

Add -P/N from the table above to the end of your custom Liberator part number to add tread brakes to your hand truck.

**Recommended** when you need light weight load control.



Part #	Disc Brakes
<b>BDC</b>	Brakes, Double Disc w/ Cable Lever
<b>BDT</b>	Brakes, Double Disc w/ T-Rod

Add -P/N from the table above to the end of your custom Liberator part number to add disc brakes to your hand truck.

**Recommended** when you need total, safe stopping power.

**Only available w/ D5, D5G, D6 and D6SS.**



Part #	Spare Disc Brake Wheels	Diameter x Width	Weight
<b>2006-156</b>	D5G, Spare Wheel Assy, 3/4" Disc Brake	10" x 3.5"	4.4 lb
<b>2006-157</b>	D5, Spare Wheel Assy, 3/4" Disc Brake	10" x 3.5"	4.4 lb
<b>2006-158</b>	D6, Spare Wheel Assy, 3/4" Disc Brake	10" x 3"	4.2 lb

**Capacity:** 350 lb per wheel

Lower cost alternative to replacing entire wheel assembly

## Brake Lever Orientation

Lever styles and orientation depends on the combination of handle and activator mechanism. No matter which you choose from, know you are getting the best in ergonomics!





## FAQ FOR LIBERATOR HAND TRUCKS

**(Q) IF I DON'T LIKE A PRODUCT OR IT DOESN'T FIT MY NEEDS, CAN I RETURN IT?**

**(A)** YES, NORMALLY WITH A 20% RESTOCK FEE WITHIN 30 DAYS OF PURCHASE. RETURN FREIGHT WILL BE THE CUSTOMER'S RESPONSIBILITY. ALSO, IF THE PRODUCT IS USED, DAMAGED OR OTHERWISE CAN'T BE RESOLD, WE WILL ISSUE ONLY SCRAP VALUE FOR THE RETURNED PRODUCT. PLEASE NOTE, SOME PRODUCTS ARE NON-RETURNABLE. CONSULT CUSTOMER SERVICE GROUP FOR MORE INFORMATION.

**(Q) DOES B&P HAVE ALL THE SAME HAND TRUCK COMPONENTS THAT COMPETITORS HAVE?**

**(A)** B&P OFFERS ALMOST EVERYTHING OUR COMPETITORS OFFER AND MUCH MORE. WE PROVIDE MANY MORE OPTIONS TO CUSTOMIZE HAND TRUCKS SPECIFIC TO HOW YOU WANT THEM.

**(Q) DO B&P LIBERATOR PARTS WORK ON OTHER BRANDS OF HAND TRUCKS?**

**(A)** THEY DO INTERCHANGE WITH MOST OTHER BRANDS OF MODULAR ALUMINUM HAND TRUCKS.



# BUILD A LIBERATOR CONVERTIBLE

## A-B HANDLE & FRAME



A1-B81  
A13-B81



A1-B88F  
A13-B88F

Part #	Senior Convertible Handle and Frame	Capacity (Up/ Down)
A1-B80	Standard Loop & Sr. Convertible Frame w/ 3 Cross Members	500/1000 lb
A13-B80	Standard Loop w/ Comfort Sleeve & Sr. Convertible Frame w/ 3 Cross Members	500/1000 lb
A1-B81	Standard Loop & Sr. Convertible Frame w/ 5 Cross Members	600/1200 lb
A13-B81	Standard Loop w/ Comfort Sleeve & Sr. Convertible Frame w/ 5 Cross Members	600/1200 lb
A1-B88F	Standard Loop & Sr. Convertible Frame w/ 5 Cross Members and Center Strap	600/1200 lb
A13-B88F	Standard Loop w/ Comfort Sleeve & Sr. Convertible Frame w/ 5 Cross Members and Center Strap	600/1200 lb



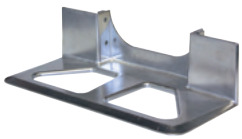
B70



B75

Part #	Junior Convertible Handle and Frame	Capacity (Up/ Down)
B70	Junior Convertible Frame w/ 4 Cross Members	600/1200 lb
B75	Junior Convertible Frame w/ 2 Cross Members	500/1000 lb

## C NOSE PLATE



CA2



C6

Part #	Nose Plates	Width x Depth
CA1*	Recessed Heel w/ Cutouts, Cast	14" x 7.5"
CA2*	Recessed Heel w/ Cutouts, Cast	18" x 7.5"
C2	Recessed Heel w/ Cutouts, Extruded Aluminum	18" x 7.5"
C6	Front Mount, Extruded Aluminum	18" x 9"

\* All cast aluminum nose plates have a **500 lb** capacity and **1 year** warranty

## D WHEELS



Part #	Wheels	Diameter x Width	Weight
D5	4 Ply Pneumatic, 3 pc. Steel Hub, Precision Bearings	10" x 3.5"	4.4 lb
D6	No Flat Solid Foam, Hub, Precision Bearings, <b>Non-Marking</b>	10" x 3"	4.2 lb
D6SS	Poly Hub, Precision Bearings, <b>Non-Marking</b>	10" x 3"	3.1 lb
D15	Poly Hub, Precision Bearings, Dark Gray	10" x 2.125"	2.3 lb

## ACCESSORIES



E2F



E5F

Part #	Folding Noses	Capacity
E2F or E2R	Full Channel Extruded Folding Nose, 20"	300 lb
E3F or E3R	Full Channel Extruded, Folding Nose, 30"	300 lb
E5F or E5R	Tubular Folding Nose, 36"	110 lb
E6F or E6R	Tubular Folding Nose, 30"	110 lb

Order "F" for use with front mount nose plates  
Order "R" for use with recessed heel or rear mount nose plates



E32



E32J

Part #	Wings
E32	Frame Wings, Senior Only, 44.25" x 2.5", 17" Overall Width
E32J	Frame Wings, Junior Only, 31.75" x 2.5", 16" Overall Width



E87



E23L



E25LP

Part #	Senior Decks
E23L	Solid Deck, 12", Senior, Snap On
E25L	Solid Deck, 12", Senior, Permanent
E50	Solid Deck, 18", Senior, Snap On
E49	Solid Deck, 18", Senior, Permanent
E25LP	Perforated Deck, 12", Senior, Permanent
E49P	Perforated Deck, 18", Senior, Permanent
E87	Senior Convertible Pan Kit

Part #	Junior Decks
E22L	Solid Deck, 12", Junior, Snap On
E24L	Solid Deck, 12", Junior, Permanent
E50J	Solid Deck, 18", Junior, Snap On
E24LP	Perforated Deck, 12", Junior, Permanent



SSR-2



SJR-3

Part #	Standard Capacity Convertible Hand Trucks	Weight	Capacity*
SSR	A1-B80-C17-D5	46 lb	500 lb/1,000 lb
SSR-2	A1-B80-CA2-D5	46 lb	500 lb/1,000 lb
SSR-3	A1-B80-CA2-D6SS	44 lb	500 lb/1,000 lb
SJR	B75-C17-D5	42 lb	500 lb/1,000 lb
SJR-2	B75-CA2-D5	42 lb	500 lb/1,000 lb
SJR-3	B75-CA2-D6SS	42 lb	500 lb/1,000 lb

\* 500 lb Capacity in upright position. 1,000 lb Capacity in down position.



# LIBERATOR SNACK/BAKERY TRUCKS



HTA-16

Part #	Snack Delivery Trucks
HTA-16	Snack Food Delivery Hand Truck as Shown w/ 8" Wheels (D16)
HTA-15	Snack Food Delivery Hand Truck w/ 10" Wheels (D5)

## Specifications

Overall Height	68" - 73"
Width	14"
Folding Nose Length	34" - 36"
Weight	28 - 35 lb
Capacity (Folding Nose)	80 lb
Capacity	600 lb



HTA-14  
Upright position



HTA-14  
Lay down position

Part #	Folding Snack Delivery Trucks
HTA-14	Folding Snack Hand Truck w/ 14" x 10 1/2", Rear Mount, Extruded Aluminum (C31) Nose Plate
HTA-10	Folding Snack Hand Truck w/ 14" x 7 1/2", Recessed Heel, Cast Aluminum (CA1 500 lb Capacity) Nose Plate

## Specifications

Overall Height	68" - 73"
Width	14"
Folding Nose Length	34" - 36"
Folding Snack HT Bed Length	66"
Folding Snack HT Handle Height	46"
Folding Snack HT Nose Height	46"
Weight	28 - 35 lb
Capacity (Folding Nose)	80 lb
Capacity (2 Wheel)	600 lb
Capacity (4 Wheel)	1200 lb



Part #	Sliding Extension Hand Truck
HTA-27	Liberator Hand Truck, Sliding Extension 7' To 10' (500 lb Capacity)

- Telescopes from 91"-118" (3 adjustable heights secured by lock pins)
- Heat treated, light weight aluminum extension with nylon sliding handle guides
- Standard loop handle, square top w/ comfort sleeve (A37)
- Extruded aluminum 16" x 12" nose plate (C8)
- No flat wheels (D6SS)
- Aluminum skids w/ nylon wear strips allow truck to easily slide out from the delivery vehicle



HTA-24

Optional extended length single pin handle

Part #	Extension Hand Truck
HTA-24	Bakery Hand Truck w/ Handle Options

Specifications	
Weight	34 lb (w/ 2 handles)
Overall Height	84"
Capacity	600 lb
Width	18" (at wheel)
Noseplate	18 1/4" x 12"

- Shipped knock down or boxed, unassembled

Available Options	
A7-Extended Length Single Pin Handle	
2nd B80 Handle	

Part #	Ice Cream Cart
IC-1	Ice Cream Truck w/ D16 Wheels, 18" Slotted Nose



Shown w/ optional stair climbers



Nose plate shown in upright position

- Riveted construction for durability
- Aircraft grade cables support nose. Vinyl coated to resist corrosion.
- Engineered housing supports axle and allows for use of stairclimbers

Specifications	
Overall Height	46"
Overall Width (Pneumatic)	24"
Usable Depth (Bottom)	18"
Overall Depth (Open)	26"
Overall Depth (Closed)	10"

Available Nose Plate Options	
18" - Slatted Nose (Standard)	24S - 24" Solid Nose
18S - 18" Solid Nose	24SL - 24" Slatted Nose

Available Wheel Options	
D16 - 8" Balloon Cushion (Std)	D9 - 8" Pneumatic
D1 - 8" tpr, Dark Gray Non-Marking	D12 - 8" Mold-On Rubber, Aluminum Core

Additional Option	
E1L - Stair Climbers	

# LIBERATOR SPECIALTY TRUCKS



Part #	Liberator 700 The Beast
HTA-700	Disc Brake Hand Truck w/ Stair Climbers (E1EB), Pull Bar (E29), Severe Duty Wings(E30SD), and Kick Back Bar(E46E), <b>700 lb</b> Capacity



**WITH THE DNA OF THE LIBERATOR, BUT THE STRENGTH OF A BEAST!**

Available Options	
E8L - 12" Long Heavy Duty Wheel Guards	8218-001 - Accessory Bag (12"W x 18"H x 2"D)
E73 - Ratchet Strap Attachment	8218-002 - Accessory Bag (12"W x 18"H x 3"D)



Part #	Keg Trucks
B5K	Sliding Keg Hook Frame, Non-Adjustable
B5MK	Sliding Keg Hook Frame. Adjustable

- Any of our Liberator hand trucks can become a keg truck. Look to our "Build A Liberator Hand Truck" section for other options.
- Using the B5MK frame, securely stack 2 or 3 kegs
- B5K frame hook adjusts to different size kegs
- B5MK frame has adjustable tines on the hook to accept a wide variety of craft kegs (hauls up to 3 kegs)
- Steel nose plates slide well under alum. kegs. 18" widths allow two 1/6 barrel kegs to fit side by side. A variety of other sizes are available.
- Also available in tubular

Available Options	
E1E - Ergo Stair Climbers	E1L - Standard Stair Climbers
NA - 14" Narrow Aisle Design	2002-E44 - Narrow Aisle Stair Climber



Part #	Studio Carts
B89-C2FT-D5-E3RFT	Senior Convertible Studio Cart w/ 30" Folding Nose
B77-C2FT-D5-E3RFT	Junior Convertible Studio Cart w/ 30" Folding Nose

- Available w/ D5, D6, D6SS or D15 wheels
- Standard cart is a Sr. or Jr. convertible w/ swing arm, casters and 30" folding nose
- 18" x 7-1/2" extruded aluminum C2 nose plate
- Optional shelves, can mix and match
- Shelf capacity 200 lb
- Optional heavy duty 8" wheel kit instead of standard 5" casters

Available Options	
E24T - 24" Carpeted Top Shelf	E22L - JR. Snap on Deck
E24B - 24" Carpeted Bottom Shelf	E24L - JR. Permanent Deck
E18T - 18" Carpeted Top Shelf	E23L - SR. Snap-On Deck
E18B - 18" Carpeted Bottom Shelf	E25L - SR. Permanent Deck
EWK - 8" Wheel Kit w/ Handle	





Part #	Three Way Hand Truck
B60-CA2-D5	Three Way Liberator Hand Truck

Specifications	
Height in 2 Wheel Position	52"
Height in 4 Wheel Position	42"
Deck Size	51" x 12"
Deck Height	11"
Capacity in 2 Wheel Position	600 lb
Capacity in 4 Wheel Position	900 lb
Weight	48 lb

- Upright, 45 and laydown positions (nose tucks in when folded up)



Part #	Convertible Ice Truck
LCHT-ICE	Senior Convertible w/ Drip Free Tray

Specifications	
Total Weight	57 lb
Holds Up To	(100) 7 lb bags
Holds Up To	(40) 20 lb bags
Capacity in 2 Wheel Position	500 lb
Capacity in 4 Wheel Position	1,000 lb

- All of the Liberator Convertible features, customized for ice delivery
- Welded corner seams are smooth to help prevent tearing of bags
- Aluminum 18" x 49" pan holds up to 2 gallons of water, helping protect customers floors
- Kit available to add ice pan to most existing convertible trucks
- Folds up for storage/ transportation

Available Option	
2002-364 - Cam Buckle Strap to Help Secure Loads During Transport	

Developed with a national retailer to safely move appliances from the warehouse to showroom and to customers vehicle for loading.



Part #	APPL Series Appliance Trucks
APPL-1	Appliance Truck w/ Double A1 Handles, 4th Wheel Attachment, Kick Bar & D16 Wheels

Additional APPL Appliance Truck Models	
APPL-2 - w/ D15 Wheels	APPL-5 - w/ Side Loops, Skids & D6 Wheels
APPL-3 - w/ Side Loops, Skids & D6SS Wheels	APPL-6 - w/ Side Loops, Skids & D15 Wheels
APPL-4 - w/ Side Loops, Skids & D5 Wheels	

- APPL-1 has 4th wheel to take the load off the operator and ratchet strap to secure loads
  - Wings w/ protective rubber strips to help reduce damage to appliances
- APPL-2 features 30" skids w/ 10" wheels for outdoor/ stair/ curb applications

Part #	HTA Series Appliance Trucks
HTA-6	4th Wheel Attachment, Wings & D16 wheels
HTA-8	4th Wheel Attachment, 16" Wide Solid Deck w/ Rubber Strips For Protection & D16 Wheels

# BUILD A CRUSADER HAND TRUCK

## T HANDLE & FRAME



Part #	Straight Back
T01*	Straight Back w/ Double Loop Handle
T02*	Straight Back w/ Double Handle Flared Grips
T03*	Straight Back w/ Single Pin Handle

\* Stair climber available as an option



Part #	Straight Back with Extensions and Stair Climber Brackets
T89	Straight Back, FWD Strap, No Stair Climber Brackets
T95	Straight Back, Back Strap, Stair Climber Brackets
T98	Straight Back, Back Strap, Stair Climber Brackets, Narrow Aisle

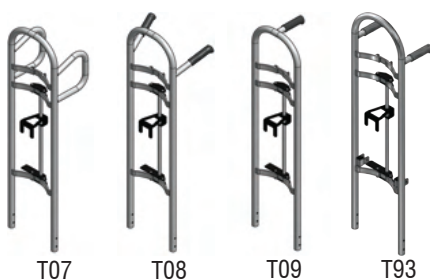


Part #	Straight Back with Stair Climber Brackets and Wings
T90	Straight Back, FWD Strap, Short Wings, Stair Climber Brackets
T92	Straight Back, FWD Strap, Wings, Stair Climber Brackets
T96	Straight Back, Back Strap, Wings, Stair Climber Brackets



Part #	Curved Back
T04*	Curved Back w/ Double Loop Handle
T05*	Curved Back w/ Double Handle
T06*	Curved Back w/ Single Pin Handle
T97	Curved Back, FWD Strap, Stair Climber Brackets, Narrow Aisle

\* Stair climber available as an option



Part #	Sliding Keg Hook
T07*	Sliding Keg Hook/Curved Back w/ Double Loop Handle
T08*	Sliding Keg Hook/Curved Back w/ Double Handle
T09*	Sliding Keg Hook/Curved Back w/ Single Pin Handle
T93	Sliding Keg Hook/Curved Back, Stair Climber Brackets, Narrow Aisle

\* Stair climber available as an option

# NOSE PLATE



C1



C20

Part #	Extruded Recessed Heel	Width x Depth
C1	Recessed Heel w/ Cutouts, Extruded Aluminum	14" x 7.5"
C19	Recessed Heel, Extruded Aluminum	14" x 7.5"
C7	Recessed Heel w/ Cutouts, Extruded Aluminum	14" x 10.5"
C2	Recessed Heel w/ Cutouts, Extruded Aluminum	18" x 7.5"
C20	Recessed Heel, Extruded Aluminum	18" x 7.5"
C15	Recessed Heel w/ Cutouts, Extruded Aluminum	18" x 10.5"



CA1



CA3

Part #	Cast Recessed Heel	Width x Depth
CA1*	Recessed Heel w/ Cutouts, Cast	14" x 7.5"
CA2*	Recessed Heel w/ Cutouts, Cast	18" x 7.5"
CA3*	Recessed Heel w/ Cutouts, Cast	14" x 12"

\* All cast aluminum nose plates have a **500 lb** capacity and **1 year** warranty



C16

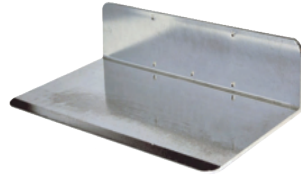


C13

Part #	Extruded Front Mount	Width x Depth
C16	Front Mount, Extruded Aluminum	14" x 7.5"
C12	Front Mount w/ Cutouts, Extruded Aluminum	14" x 7.5"
C4	Front Mount, Extruded Aluminum	14" x 9"
C8	Front Mount, Extruded Aluminum	16" x 12"
C17	Front Mount, Extruded Aluminum	18" x 7.5"
C13	Front Mount w/ Cutouts, Extruded Aluminum	18" x 7.5"
C6	Front Mount, Extruded Aluminum	18" x 9"
C26	Front Mount w/ Cutouts, Extruded Aluminum	18" x 9"
C14	Front Mount, Extruded Aluminum	18" x 12"
C10	Front Mount, Extruded Aluminum	20" x 9"
C9	Front Mount, Extruded Aluminum	20" x 12"



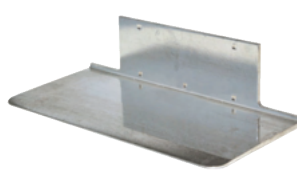
C26



C9



C3

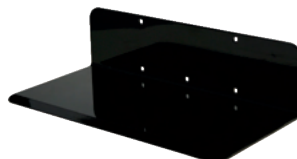


C5

Part #	Extruded Rear Mount	Width x Depth
C3	Rear Mount, Extruded Aluminum	14" x 7.5"
C5	Rear Mount, Extruded Aluminum	18" x 7.5"



C29

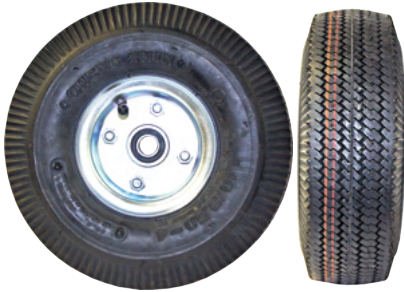


C22

Part #	Steel Recessed or Front Mount	Width x Depth
C29	Recessed Mount, Steel	14" x 7.5"
C28	Recessed Mount, Steel	18" x 7.5"
C21	Front Mount, Steel	14" x 9"
C22	Front Mount, Steel	18" x 9"



# D WHEELS



Part #	Pneumatic Wheel	Diameter x Width	Weight
D5	4 Ply Pneumatic, 3 pc. Steel Hub, Precision Bearings	10" x 3.5"	4.4 lb
D5F	D5 Foam Filled - Can't Go Flat	10" x 3.5"	7.0 lb
D5S	D5 w/ Slime Sealant	10" x 3.5"	5.0 lb

**Capacity:** 350 lb per wheel

**Recommended uses:**

- Outdoor surfaces such as gravel, grass & sand
- Inclement conditions such as snow, slush or mud
- Rough or uneven surfaces
- Applications requiring superior shock absorption

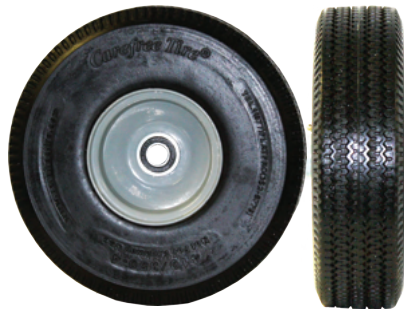


Part #	Pneumatic Wheel	Diameter x Width	Weight
D5G	D5 in Gray Color, <b>Non-Marking</b>	10" x 3.5"	4.4 lb

**Capacity:** 350 lb per wheel

**Recommended uses:**

- Outdoor surfaces such as gravel, grass & sand
- Inclement conditions such as snow, slush or mud
- Rough or uneven surfaces
- Applications requiring superior shock absorption



Part #	Carefree® Wheel	Diameter x Width	Weight
D6	No Flat Solid Foam, <b>Non-Marking</b>	10" x 3"	4.2 lb

**Capacity:** 350 lb per wheel

**Recommended uses:**

- Outdoor surfaces such as gravel, grass & sand
- Inclement conditions such as snow, slush or mud
- Rough or uneven surfaces



Part #	Pneumatic Wheel	Diameter x Width	Weight
D9	Pneumatic, 2 pc. Steel Hub	8" x 2.5"	2.9 lb

**Capacity:** 297 lb per wheel

**Recommended uses:**

- Smooth/semi smooth, hard surfaces
- General purpose

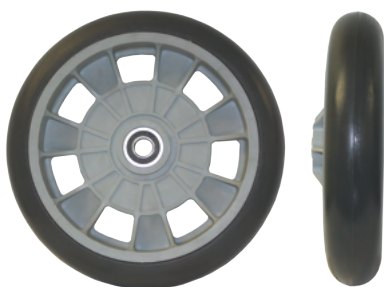


Part #	Carefree® Wheel	Diameter x Width	Weight
D6SS	Poly Hub, Non-Marking	10" x 3"	3.1 lb

Capacity: 350 lb per wheel

**Recommended uses:**

- Outdoor surfaces such as gravel, grass & sand
- Inclement conditions such as snow, slush or mud
- Rough or uneven surfaces



Part #	Balloon Cushion Wheel	Diameter x Width	Weight
D15	Poly Hub, Precision Bearings, Dark Gray	10" x 2.125"	2.3 lb
D16	Poly Hub, Precision Bearings, Dark Gray	8" x 2.125"	1.6 lb

Capacity: 350 lb per wheel

**Recommended uses:**

- Smooth/semi smooth, hard surfaces
- General purpose
- City deliveries - side walk & concrete
- Delicate floor, tile & carpet



Part #	Performance TPR Wheel	Diameter x Width	Weight
D1	High Performance, in Gray Color, Non-Marking	8" x 2"	2 lb

Capacity: 500 lb per wheel

**Recommended uses:**

- Smooth/semi smooth, hard surfaces
- General purpose



Part #	Rubber Wheel	Diameter x Width	Weight
D12	Rubber on Aluminum, Offset Hub	8" x 1.625"	2.1 lb

Capacity: 500 lb per wheel

**Recommended uses:**

- Smooth/semi smooth, hard surfaces
- General purpose

**Safety Note: Never exceed rated hand truck capacity (600 lb, unless otherwise noted).**

## E ACCESSORIES



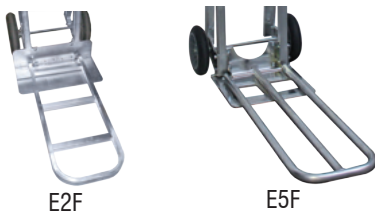
Part #	Extruded Stair Climbers
E1E	Extruded Aluminum Ergo Stair Climbers
E1L	Extruded Aluminum Stair Climbers



Part #	Wheel Guards	Length x Width
E8	Wheel Guards	7.38" x 2.5"
E8L	Wheel Guards	12" x 4"



Part #	Pull Back Bar
E47	Pull Back Bar for E1L Stair Climbers
E47E	Pull Back Bar for E1E "Ergo" Stair Climbers



Part #	Folding Noses	Capacity
E2F or E2R	Full Channel Extruded Folding Nose, 20"	300 lb
E3F or E3R	Full Channel Extruded, Folding Nose, 30"	300 lb
E4F or E4R	Tubular Folding Nose, 44"	110 lb
E5F or E5R	Tubular Folding Nose, 36"	110 lb
E6F or E6R	Tubular Folding Nose, 30"	110 lb

Order "F" for use with front mount nose plates  
 Order "R" for use with recessed heel or rear mount nose plates

## FAQ FOR CRUSADER HAND TRUCKS

**(Q) WHAT MAKES B&P CRUSADER HAND TRUCKS DIFFERENT FROM OTHER TUBULAR HAND TRUCKS?**

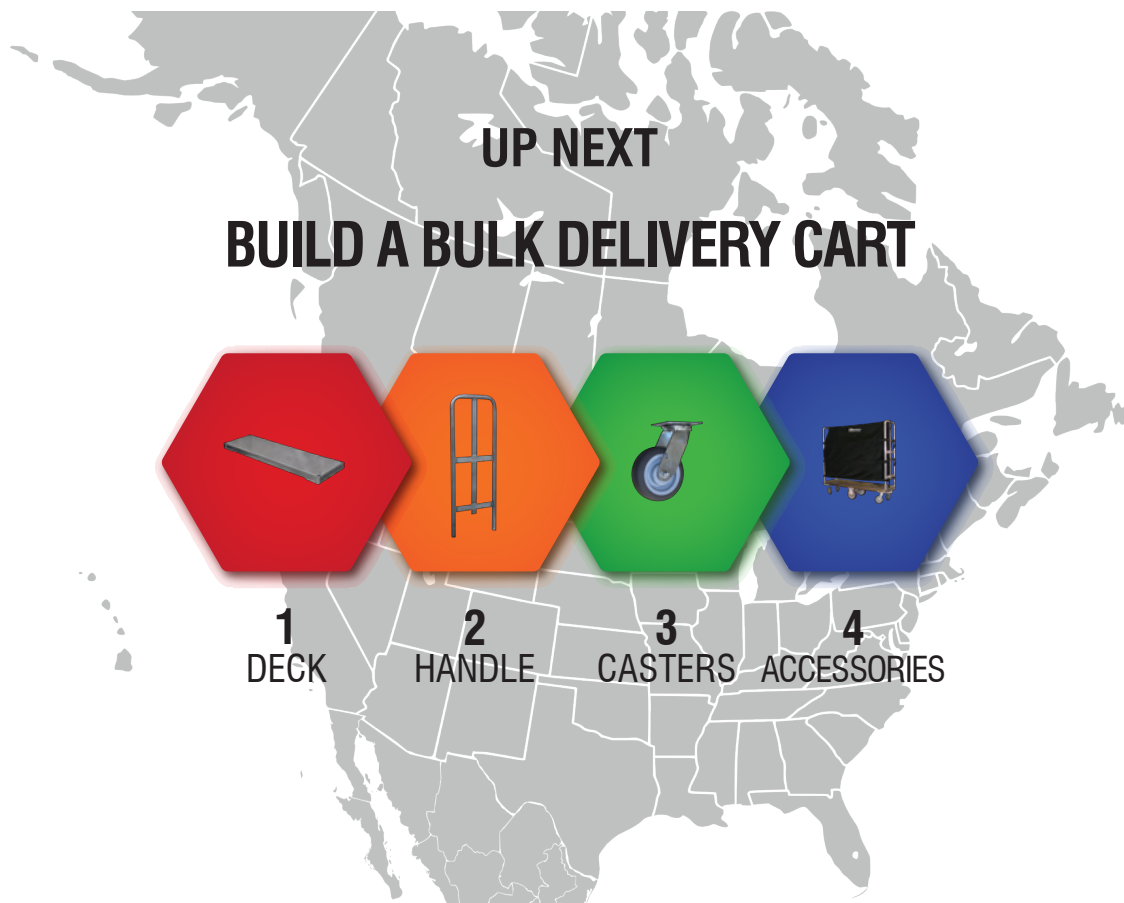
**(A)** THERE ARE MANY GREAT FEATURES THAT SETS OUR CRUSADER HAND TRUCKS APART FROM OTHERS ON THE MARKET, BUT THE MOST NOTABLE DIFFERENCE IS THAT OUR NOSE PLATES ARE REPLACEABLE. NO LONGER DO YOU HAVE TO THROW OUT A \$200+ HAND TRUCK FOR A DINGED UP NOSE PLATE.

**(Q) I USUALLY BUILD LIBERATOR HAND TRUCKS. IF I WANT TO BUILD A CONFIGURATION AS A CRUSADER HAND TRUCK EQUIVALENT, WHICH NOSE MOUNTING KIT DO I USE?**

**(A)** MOUNTING KITS ARE DEPENDANT ON THE NOSE PLATE TYPE AND WHEEL CHOICE. IF YOU ARE BUILDING A LIBERATOR CONFIGURATION AS A CRUSADER, THE NOSE PLATE WOULD REQUIRE THE SAME MOUNTING KIT.

**(Q) DO THE CRUSADERS USE THE SAME PARTS AS THE LIBERATOR HAND TRUCKS?**

**(A)** ALMOST ALL OF THE NOSE PLATES AND WHEELS ARE INTERCHANGEABLE ALONG WITH A FEW OF THE ACCESSORIES. WE HAVE A DEDICATED CRUSADER MINI CATALOG THAT SHOWS ALL YOUR AVAILABLE OPTIONS.





# BUILD A ROUTE DELIVERY CART

## 1 DECK



Part #	Deck Size	Width x Length
FHE-1854	Heavy Duty Bulk Delivery Cart Deck	18" x 54"
FHE-1857	Heavy Duty Bulk Delivery Cart Deck	18" x 57"
FHE-1860	Heavy Duty Bulk Delivery Cart Deck	18" x 60"
FHE-1861	Heavy Duty Bulk Delivery Cart Deck	18" x 61"

## 2 HANDLE



203  
204

206  
207

Option #	Handle
203	18" x 50" Round Handle
204	18" x 50" Round Handle w/ Curtain Buttons
206	18" x 50" Square Handle
207	18" x 50" Square Handle w/ Curtain Buttons
NH	No Handle(s)

## 3 CASTERS



HD10

Option #	Caster Configurations	
	Center Wheels	Casters
HD1*	8" TPR, Round Tread, Poly Core	8" Round Tread Swivel Casters
HD4	8" TPR, Square Tread, Poly Core Center	6" Square Tread Swivel Casters
HD8	8" TPR, Square Tread, Poly Core	6" Square Tread Swivel Casters
HD9	8" TPR, Round Tread, Poly Core	6" Square Tread Swivel Casters
HD10**	8" Urethane Square Tread	6" Square Tread Swivel Casters
SD7*	6" x 2" Square Tread	6" x 2" Square Tread Swivel Casters

\* Not Available w/ Brakes

\*\* Standard Wheel Configuration

## ACCESSORIES **4**



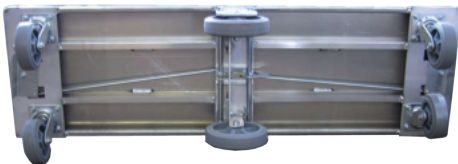
Part #	Accessories
<b>2025-302</b>	Carrier Plate

- Bolt on plate allows transporting bulk deliver cart (handles removed) in most standard hand truck carriers



Part #	Accessories
<b>2025-503</b>	Containment Curtain - Requires Handle Buttons

- Helps protect product while delivering in inclement weather
- Eliminates need for expensive and messy stretch wrap
- Opens from either side
- Clips allow for fast adjustment to different load sizes
- Metal ends attach the curtain quickly and outlasts plastic



Part #	Brakes
<b>CB</b>	Center Brake System

\* Add -CB to the end of your part number.

- Foot actuated brake. Levers located on both ends and both sides lock the center wheels for safer loading/unloading
- Exclusive design places brake rods under the deck allowing carts to be forklifted from the sides



Part #	Add-On
<b>2025-163*</b>	18" Shelf - 200 lb Capacity - Requires 60" Cart

\* Add -SH to the end of your part number.

- Quick release pins keep shelf safely on the cart. Attached to shelf so they do not get lost

FHE-1860-204-HD10-SH-CB

# PRECONFIGURED ROUTE DELIVERY CARTS



Part #	Deck Size	Handle	Caster Configuration	
FHE-16	16" x 60"	(1) 2025-174	(2) 8057-047, 6" X 2", Rigid, Polyurethane Caster	(4) 8057-046, 5" X 2", Swivel, Gray Performa

**Capacity:** 1,200 lb

**Weight:** 64 lb

- Slightly narrower, 16" width for tight delivery situations
- Same heavy duty construction
- Comes standard w/ one handle
- Optional 2nd handle and carrier plate

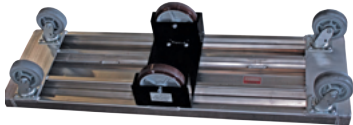


Part #	Deck Size	Handle	Caster Configuration	
FHE-1	18" x 60"	(2) 2025-103	(2) 8057-114, 8" x 2" Urethane, Square Tread	(4) 8057-038, 6" x 2" TPR, Square Tread

**Capacity:** 1,200 lb

**Weight:** 95 lb

- One piece deck eliminates peeling and warping
- Full width caster plates won't break off
- Full perimeter welded handle pockets stay secure
- Several caster/ wheel combinations to suit any delivery situation
- Comes standard w/ two handles



Part #	Deck Size	Handle	Caster Configuration	
FHE-6	18" x 60"	(2) 2025-103	(2) 8057-114, 8" x 2" Urethane, Square Tread	(4) 8057-038, 6" x 2" TPR, Square Tread
Same as FHE-1 w/ wide track configuration for Walkie Rider applications				

**Capacity:** 1,200 lb

**Weight:** 110 lb

- Durable steel housings secure the center wheels. Powder coated for excellent resistance to corrosion



Part #	Deck Size	Handle	Caster Configuration	
FHE-8	24" x 60"	(2) 2025-154	(2) 8057-114, 8" x 2" Urethane, Square Tread	(4) 8057-038, 6" x 2" TPR, Square Tread

**Capacity:** 1,200 lb

**Weight:** 93 lb

- Warehouse cart
- Optional 18" and 24" shelves
- Center brake is also available



Part #	Deck Size	Handle	Caster Configuration
FHE-19	18" X 60" w/ 4 Degree Angle	(1) 2025-197 (1) 2025-198 (1) 2025-199	(2) 8057-114, 8" x 2" Urethane, Square Tread 8057-038, 6" x 2" TPR, Square Tread

**Capacity:** 1,200 lb  
**Weight:** 110 lb

- Angled deck helps keep product on the cart
- Removable back and handles for transportation/ storage
- Clipboard holder on one end with spring clip for loose papers



Part #	Commercial Ice Cart
5012-002	Ice Cart w/ Foot Brake System
5012-003	Ice Cart w/ Dead Man Brake
5012-006	XL Ice Cart w/ Dead Man Brake

**Available Options:**

- 5012-502— Ice Cart Liner for 002 & 003
- 5012-505— XL Ice Cart Liner for 006
- Maneuvers easily w/ swivel casters in front
- Flat free tires
- 5012-002 and 5012-003 can hold up to (22) 20 lb bags of ice
- 5012-006 can hold up to (25) 20 lb bags or (70) 7 lb bags of ice
- Tray keeps water off customers floors
- Optional liner helps keep condensation in the cart. Can be silk screened with customer logo



Part #	Sprinter Van Carts
5018-004	FWD Cart, 144SP w/ Collapsible Shelving
5018-005	AFT Cart, 144SP w/ Collapsible Shelving

**Make it a System:**

- 5018-006— FWD Left Cart Brace
- 5018-007— FWD Right Cart Brace
- 5018-009— AFT Left Cart Brace
- 5018-008— AFT Right Cart Brace
- 5018-010— MID Left Cart Brace
- 5018-011— MID Right Cart Brace



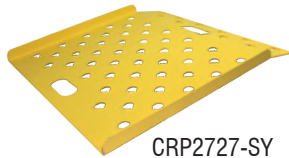
Part #	Milk Cart
5027-001	Milk Cart

- Made from durable, non-rusting aluminum
- 4 swivel casters allow easy maneuvering
- Holds 20 standard milk crates



# CURB AND DEFENDER WALK RAMPS

## Punched Curb Ramps



CRP2727-SY  
Shown with  
optional safety yellow  
powder coat.

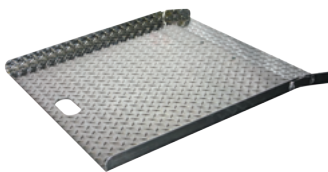
Part #	Width x Length	Capacity	Weight
CRP2224	22" x 24"	500 lb	6 lb
CRP2618	26" x 18"	750 lb	8 lb
CRP2727	27" x 27"	750 lb	13 lb
CRP2736	27" x 36"	750 lb	17.5 lb
CRP3030	30" x 30"	750 lb	15 lb
CRP2745	27" x 45"	750 lb	22 lb

## Punched Wedge Curb Ramps



Part #	Width x Length	Capacity	Weight
CRW2224	22" x 24"	600 lb	6 lb
CRW2618	26" x 18"	750 lb	12 lb

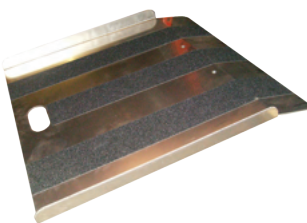
## Diamond Plate Curb Ramps



Part #	Width x Length	Capacity	Weight	Stop
CR2618	16" x 18"	750 lb	10 lb	Legs
CR2727	27" x 27"	750 lb	17 lb	Legs
CR3030	30" x 30"	750 lb	20 lb	Legs
CRU2618	26" x 18"	750 lb	9 lb	Handle
CRU2727	27" x 27"	750 lb	16 lb	Handle
CRU3030	30" x 30"	750 lb	19 lb	Handle
LCRU2618	26" x 18"	500 lb	6 lb	Handle
LCRU2727	27" x 27"	500 lb	11 lb	Handle

All of the curb ramps above can be powder coated safety yellow. Just Add -SY to the part number when ordering.

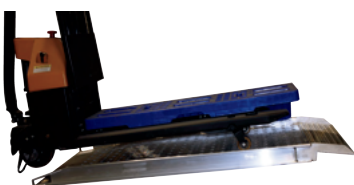
## Smooth Non-Skid Curb Ramps



Part #	Width x Length	Capacity	Weight	Stop
NCRU2727	27" x 27"	750 lb	15 lb	Handle
NCR2727	27" x 27"	750 lb	15 lb	Leg
NCR2736	27" x 36"	750 lb	20 lb	Leg
NCR2745	27" x 45"	1,400 lb	34 lb	Leg
NCR3030	30" x 30"	750 lb	19 lb	Leg
NCR3436	34" x 36"	1,400 lb	33 lb	Leg

-Safety yellow not available on smooth non-skid curb ramps

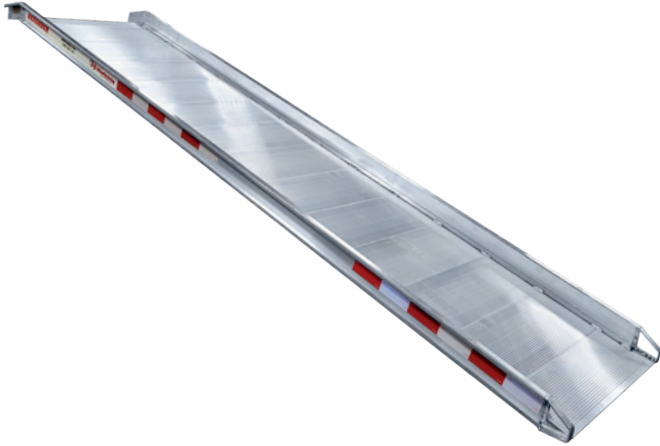
## Pallet Jack Curb Ramps



Part #	Width x Length	Capacity	Weight
PRP-3606-SP1	36" x 72"	2,000 lb	56 lb

# DEFENDER

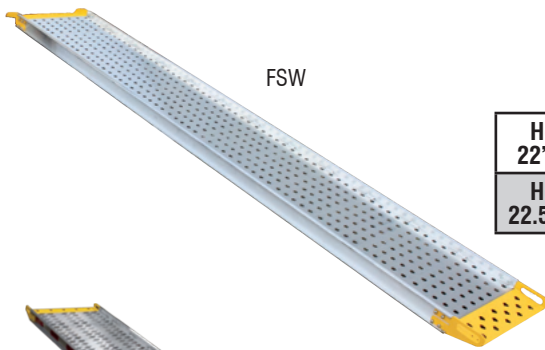
## High Capacity DEFENDER Walk Ramps



Part #	Dimensions	Capacity
HCR-3006	30" x 6'	4,000 lb
HCR-3012	30" x 12'	
HCR-3014	30" x 14'	
HCR-3016	30" x 16'	
HCR-3506	35" x 6'	
HCR-3512	35" x 12'	
HCR-3514	35" x 14'	
HCR-3516	35" x 16'	
HCR-3906	39" x 6'	
HCR-3908	39" x 8'	
HCR-3912	39" x 12'	
HCR-3914	39" x 14'	
HCR-3916	39" x 16'	

## Food Service Walk Ramps (FSW)

	Part #	12' Length	Part #	14' Length	Part #	16' Length
Apron w/ 2 Hooks	FSW-2612-AH	Capacity: 1,000 lb Weight: 103 lb	FSW-2614-AH	Capacity: 1,000 lb Weight: 110 lb	FSW-2616-AH	Capacity: 900 lb Weight: 117 lb
Apron w/ 2 Pins	FSW-2612-AP		FSW-2614-AP		FSW-2616-AP	
Apron w/ Single Pin	FSW-2612-ACP		FSW-2614-ACP		FSW-2616-ACP	



## Food Service Walk Ramps (FSW220/225)

	Part #	14' Length	Part #	16' Length
Hooks on 22" Centers	FSW-2614-220	Capacity: 1,300 lb Weight: 106 lb	FSW-2616-220	Capacity: 1,000 lb Weight: 117 lb
Hooks on 22.5" Centers	FSW-2614-225		FSW-2616-225	

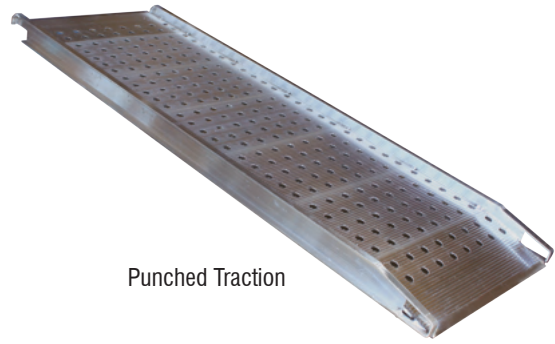


## Walk Ramp Carriers

Part #		Weight
C26140-STD	Carrier, Open, 26" Wide For 14' Ramp	142 lb
C26160-STD	Carrier, Open, 26" Wide For 16' Ramp	158 lb



Twin Tooth Traction



Punched Traction

### Twin Tooth Traction Walk Ramps

Type	Min	Max	Length	Capacity	26" Width		28" Width		38" Width	
					Part #	Weight	Part #	Weight	Part #	Weight
A	6"	21"	6'	2,000 lb	X		PR-2806-A	48 lb	PR-3806-A	61 lb
	6"	25"	7'	1,800 lb			PR-2807-A	56 lb	PR-3807-A	70 lb
	6"	29"	8'	1,700 lb			PR-2808-A	63 lb	PR-3808-A	79 lb
	6"	33"	9'	1,650 lb			PR-2809-A	70 lb	PR-3809-A	88 lb
	6"	38"	10'	1,500 lb			PR-2810-A	77 lb	PR-3810-A	97 lb
	6"	46"	12'	1,400 lb			PR-2812-A	92 lb	PR-3812-A	115 lb
	6"	54"	14'	1,200 lb			PR-2814-A	107 lb	PR-3814-A	133 lb
	6"	62"	16'	1,000 lb			PR-2816-A	121 lb	PR-3816-A	151 lb
F	6"	23"	6'	2,000 lb	PR-2606-F	47 lb	PR-2806-F	49 lb	PR-3806-F	62 lb
	6"	27"	7'	1,800 lb	PR-2607-F	54 lb	PR-2807-F	57 lb	PR-3807-F	71 lb
	6"	31"	8'	1,700 lb	PR-2608-F	61 lb	PR-2808-F	64 lb	PR-3808-F	80 lb
	6"	35"	9'	1,650 lb	PR-2609-F	68 lb	PR-2809-F	71 lb	PR-3809-F	89 lb
	6"	40"	10'	1,500 lb	PR-2610-F	75 lb	PR-2810-F	79 lb	PR-3810-F	98 lb
	6"	48"	12'	1,400 lb	PR-2612-F	89 lb	PR-2812-F	93 lb	PR-3812-F	116 lb
	6"	56"	14'	1,200 lb	PR-2614-F	103 lb	PR-2814-F	108 lb	PR-3814-F	134 lb
	6"	64"	16'	1,000 lb	PR-2616-F	117 lb	PR-2816-F	122 lb	PR-3816-F	152 lb

### Punched Traction Walk Ramps

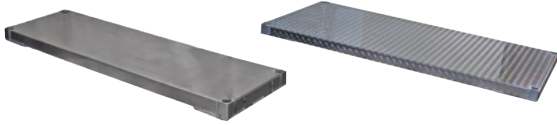
Type	Min	Max	Length	Capacity	26" Width		28" Width		38" Width	
					Part #	Weight	Part #	Weight	Part #	Weight
A	6"	21"	6'	2,000 lb	PRP-2606-A	43 lb	PRP-2806-A	44 lb	PRP-3806-A	57 lb
	6"	25"	7'	1,800 lb	PRP-2607-A	50 lb	PRP-2807-A	52 lb	PRP-3807-A	66 lb
	6"	29"	8'	1,700 lb	PRP-2608-A	56 lb	PRP-2808-A	59 lb	PRP-3808-A	74 lb
	6"	33"	9'	1,650 lb	PRP-2609-A	63 lb	PRP-2809-A	66 lb	PRP-3809-A	82 lb
	6"	38"	10'	1,500 lb	PRP-2610-A	69 lb	PRP-2810-A	73 lb	PRP-3810-A	91 lb
	6"	46"	12'	1,400 lb	PRP-2612-A	83 lb	PRP-2812-A	87 lb	PRP-3812-A	107 lb
	6"	54"	14'	1,200 lb	PRP-2614-A	96 lb	PRP-2814-A	100 lb	PRP-3814-A	124 lb
	6"	62"	16'	1,000 lb	PRP-2616-A	110 lb	PRP-2816-A	114 lb	PRP-3816-A	141 lb
F	6"	23"	6'	2,000 lb	PRP-2606-F	44 lb	PRP-2806-F	45 lb	PRP-3806-F	58 lb
	6"	27"	7'	1,800 lb	PRP-2607-F	51 lb	PRP-2807-F	53 lb	PRP-3807-F	67 lb
	6"	31"	8'	1,700 lb	PRP-2608-F	57 lb	PRP-2808-F	60 lb	PRP-3808-F	75 lb
	6"	35"	9'	1,650 lb	PRP-2609-F	64 lb	PRP-2809-F	67 lb	PRP-3809-F	83 lb
	6"	40"	10'	1,500 lb	PRP-2610-F	70 lb	PRP-2810-F	74 lb	PRP-3810-F	92 lb
	6"	48"	12'	1,400 lb	PRP-2612-F	84 lb	PRP-2812-F	88 lb	PRP-3812-F	108 lb
	6"	56"	14'	1,200 lb	PRP-2614-F	97 lb	PRP-2814-F	101 lb	PRP-3814-F	125 lb
	6"	64"	16'	1,000 lb	PRP-2616-F	111 lb	PRP-2816-F	115 lb	PRP-3816-F	142 lb

Type A = Apron End  
Type F = Hook End

# DOCK & WAREHOUSE

## BUILD A PLATFORM TRUCK

### DECK 1

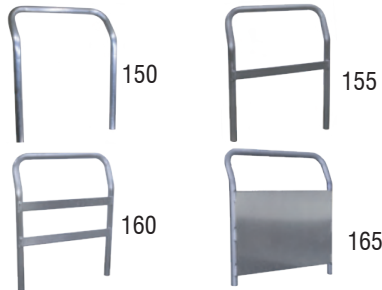


Add "S" at the end of part number to indicate Smooth Plate.  
Add "T" at the end of part number to indicate Diamond Plate.

#### Platform Trucks

Part # Formed Deck	Part # Welded Deck	Width x Length
PTF-2436-150	PT-2436-150	24" x 36"
PTF-2448-150	PT-2448-150	24" x 48"
	PT-2460-150	24" x 60"
PTF-3048-150	PT-3048-150	30" x 48"
PTF-3060-150	PT-3060-150	30" x 60"
PTF-3072-150	PT-3072-150	30" x 72"
PTF-3648-150	PT-3648-150	36" x 48"
	PT-3660-150	36" x 60"
	PT-3672-150	36" x 72"

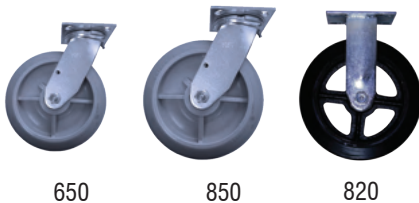
-Includes Deck and (1) #150 Handle



### HANDLE 2

Option #	Handle
150	Handle, No Strap
155	Handle, 1 Strap
160	Handle, 2 Straps
165	Handle, w/ 18" Panel

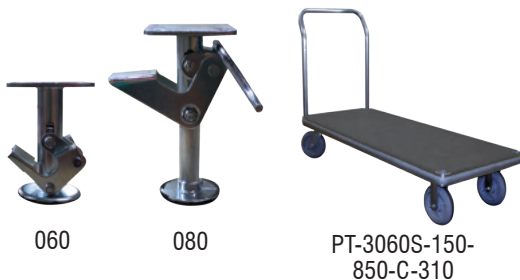
### CASTERS 3



Option #	Casters	Size	Capacity
650	Caster, Poly Core, Round TPR Tread	6" x 2"	1,500 lb
850	Caster, Poly Core, Round TPR Tread	8" x 2"	2,000 lb
820	Caster, Rubber on Iron Core	8" x 2"	2,000 lb
NC	No Casters		

Each truck comes with 2 rigid casters and 2 swivel casters.

### ACCESSORIES 4



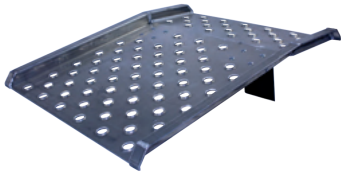
Option #	Accessories
310*	Rubber Bumper, Gray
C**	Carpeted Deck, Gray
060	Floor Lock for 6" Casters
080	Floor Lock for 8" Casters

\*Welded deck is required for full perimeter rubber bumper and carpet options.

\*\*Full perimeter rubber bumper is required with carpeted deck.

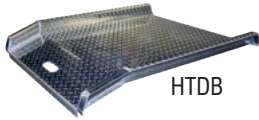


### Apron Hand Truck Dock Boards

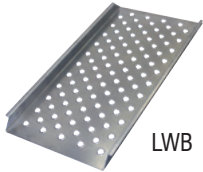


Part #	Width x Length	Capacity	Leg Length/ Max. Height Difference	Weight
AHTD-3036	30" x 36"	800 lb	7"/ 5"	27 lb
AHTD-3048	30" x 48"		9"/ 7"	35 lb

### Aluminum Dock Boards



HTDB

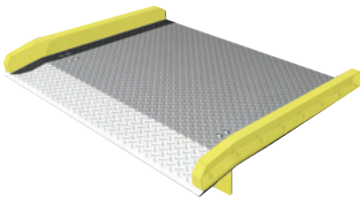


LWB

Part #	Width x Length	Capacity	Weight
HTDB-2860	28" x 60"	700 lb	35 lb
HTDB-3048	30" x 48"	800 lb	30 lb
HTDB-3260	32" x 60"	700 lb	40 lb
LWB-2448	24" x 48"	750 lb	39 lb

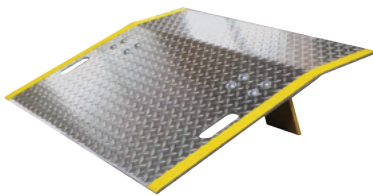
We have resources and instructions that can help you determine which size dock board or plate will suit your needs safely. Both boards and plates can also be applied to Refrigerated Trucks. Please call Customer Service at 800-334-7141.

### Steel Curb Dock Boards



Part #	Width x Length	Capacity	Leg Length/ Max. Height Difference	Weight
ADS10-4860	48" X 60"	10,000 lb	12"/ 10"	189 lb
ADS10-6036	60" X 36"		7"/ 5"	126 lb
ADS10-6048	60" X 48"		9"/ 7"	169 lb
ADS10-6060	60" X 60"		12"/ 10"	211 lb
ADS10-6072	60" X 72"		18"/ 12"	261 lb
ADS10-7260	72" X 60"		12"/ 10"	237 lb

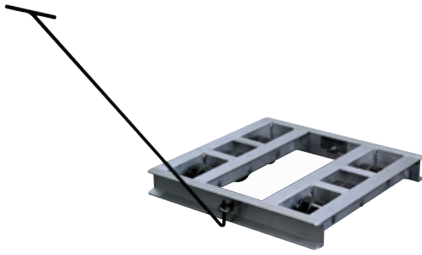
### Aluminum Dock Plates



Part #	Width x Length	Capacity	Leg Length/ Max. Height Difference	Weight
E-3024	30" X 24"	5,200 lb	7"/ 3"	55 lb
E-3036	30" X 36"	1,800 lb	7"/ 5"	60 lb
E-3048	30" X 48"	1,400 lb	9"/ 7"	76 lb
E-3624	36" X 24"	3,600 lb	7"/ 3"	51 lb
E-3630	36" X 30"	3,000 lb	7"/ 5"	58 lb
E-3636	36" X 36"	2,500 lb	7"/ 5"	68 lb
E-3660	36" X 60"	1,300 lb	12"/ 10"	107 lb
E-4830	48" X 30"	1,000 lb	7"/ 4"	72 lb
E-4836	48" X 36"	3,500 lb	7"/ 5"	83 lb
E-4860	48" X 60"	1,800 lb	12"/ 10"	132 lb
E-6024	60" X 24"	5,700 lb	7"/ 3"	71 lb
E-6036	60" X 36"	4,100 lb	7"/ 5"	98 lb
E-6048	60" X 48"	2,900 lb	9"/ 7"	129 lb
E-6060	60" X 60"	2,000 lb	12"/ 10"	160 lb
E-7230	72" X 30"	5,400 lb	7"/ 4"	98 lb
E-7260	72" X 60"	3,000 lb	12"/ 10"	182 lb

## Pallet Dollies

4,000 lb Capacity 6 Roller		6,000 lb Capacity 8 Roller		8,000 lb Capacity 10 Roller		Length
Model #	Weight	Model #	Weight	Model #	Weight	
2424-6T	34 lb					24" x 24"
3636-6T	32 lb	3636-8T	37 lb	3636-10T	40 lb	36" x 36"
3642-6T	34 lb	3642-8T	40 lb	3642-10T	43 lb	36" x 42"
3648-6T	36 lb	3648-8T	41 lb	3648-10T	44 lb	36" x 48"
4048-6T	36 lb	4048-8T	42 lb	4048-10T	45 lb	40" x 48"
4242-6T	37 lb	4242-8T	43 lb	4242-10T	46 lb	42" x 42"
4248-6T	37 lb	4248-8T	43 lb	4248-10T	46 lb	42" x 48"
4848-6T	38 lb	4848-8T	44 lb	4848-10T	47 lb	48" x 48"*



3636-6T-H  
Shown with  
optonal handle

### Available Options:

H — Two Handle Loops and Handle  
CB— Center Support Crossbar

### Note:

Tilt option is standard. If non-tilt is desired, delete "T" and replace with "NT" when ordering.

## THE INDUSTRY'S BEST WARRANTY!

B&P Manufacturing warrants to the original purchaser that the items covered by this agreement shall be free from defects in material and workmanship under normal use and service for a period of two (2) years from the date of shipment to the purchaser. If within such a period any product is proved to be defective, the product shall be repaired or replaced at the manufacturer's discretion. B&P Manufacturing's obligation is limited to repair and replacement and is conditioned upon receiving a written notice of the alleged defects within the two (2) year warranty period and no more than ten (10) days after its discovery. After written approval by B&P Manufacturing, the product or defective part must be returned to B&P Manufacturing, FOB, its factory. The term "original purchaser" as used in this warranty

shall mean the person or entity to which product was shipped by B&P Manufacturing, its distributor or agent. If purchaser has enrolled in the 2 + 1 warranty program, then all of the above applies except the written notice needs to be within the three (3) year period and no more than ten (10) days after discovery. The product in question must be enrolled in the 2 + 1 program to qualify for the 1-year extension. This warranty does not apply to parts subject to wear, parts not manufactured by B&P Manufacturing, or to products or parts repaired or altered by any entity other than B&P Manufacturing. It also does not cover defects or damage due to negligence, accident, abuse, or misuse.

Parts that are not covered under the two (2) year warranty are: tires, inner tubes, wheels (unless expressly specified otherwise in our literature), bearings, casters, phenolic rollers, cast nose plates, cast stair climbers, accessory bags and lift chains. The warranty obligations of B&P Manufacturing shall in all respects conform and be limited to the warranty extended to B&P Manufacturing by the supplier.

**BACKED BY THE INDUSTRY'S ONLY  
2+1 FACTORY EXTENDED WARRANTY**



For 2+1 factory extended warranty qualifications,  
visit <https://www.bpmfg.com/what-is-the-warranty-on-your-products/>



### California Proposition 65 Warning

Some products may contain chemicals known to the State of California to cause cancer, birth defects or other reproductive harm.

Please visit [www.P65Warnings.ca.gov](http://www.P65Warnings.ca.gov) for additional information



Jewelry Cart

B&P Manufacturing prides itself in creating custom material handling solutions specific to our customers needs.

Have a material handling problem?

We can help!



Order Picking Cart



(800) 334-7141  
(231) 775-2229  
(231) 775-0013 Fax

[www.bpmfg.com](http://www.bpmfg.com)

[bpsales@bpmfg.com](mailto:bpsales@bpmfg.com)

8051 E. 34 Road  
Cadillac, MI 49601  
USA