



Facility Maintenance Product Catalog 2018

b&p ***Manufacturing***
Engineered Delivery Products

ISO 9001 Certified



Hand Truck Features

B&P *Liberator* hand trucks are the strongest, safest and longest lasting hand trucks ever made - backed by an industry exclusive 2 year warranty!

Extensions:

- Choose from traditional channel style or B&P exclusive heat treated tubular extensions.
- Channel available in 52", 55", 60" and 68"
- Tubular available in 62" and 68"

Channel



Handles:

- Large selection of handles.
- Red or blue comfort sleeves on some handle options.
- Exclusive heat treated welded style handles for greater strength.

Stair Climbers:

- Extruded much more durable than cast.
- Extra thick reversible bolt on wear strips outlast all others many times over.
- New E1E Ergo Stair Climber to maneuver stairs with less effort.

Frames:

- 600 lb. vs competitors 500 lb. capacity hand trucks.
- 4 sided ribbed cross members and top logo channel for rigidity & strength.
- Logo channel also allows room for custom company decal.
- Assembled with exclusive military grade rivets used on aircraft won't loosen up.

Powder Coating:

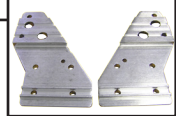
- Exclusive frame and/or stair climber powder coating available in red, blue, green & black.

Side Channel Reinforcements:

- Bolted at top and bottom which spreads out stress to resist cracking or bending of frames. Competitors only bolt them at the bottom.

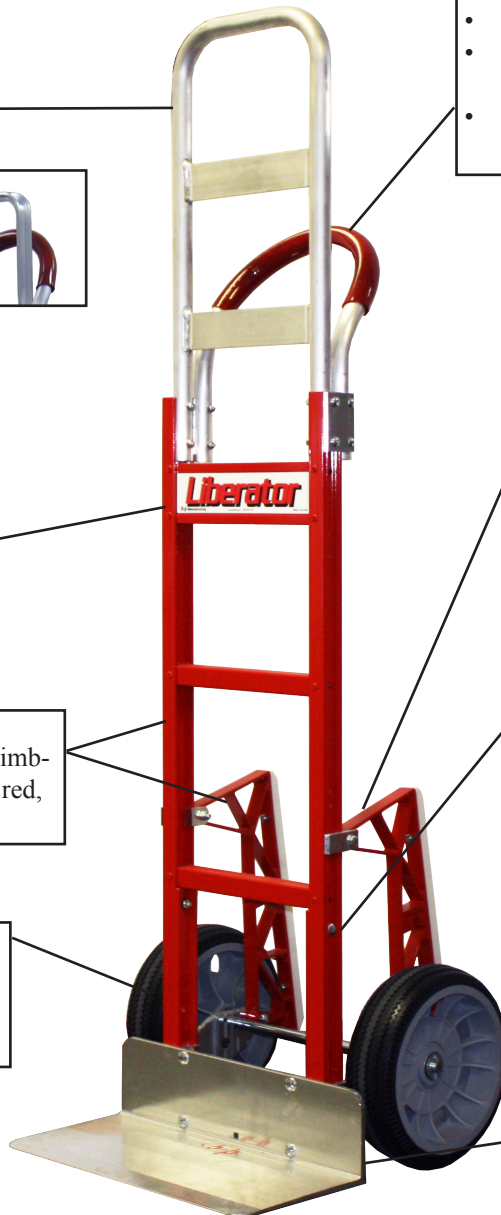
Wheel Brackets:

- B&P Exclusive extruded brackets are guaranteed for life never to crack or break.



Nose Plate Brackets:

- Extra thick & solid brackets won't crack or break.
- Beveled to inside of frame to eliminate gaps which allow for play and loosening up over time.



B&P components are interchangeable with other manufacturers to make existing hand trucks last longer!

Hand Trucks



A11

Double Grip
48" Overall



A1

Single Loop
50" Overall



A5

Single Pin Grip
62" Overall



A7

Vertical Grip
52" Overall



A42

Flared Double Grip
62" Overall



B10

Straight Back
500 lb. Capacity
39" Overall



B1

Logo Channel
600 lb. Capacity
39" Overall



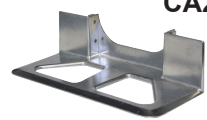
B2

Logo Channel
One Strap
600 lb. Capacity
39" Overall



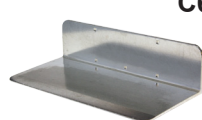
B17

Logo Channel
600 lb. Capacity
45" Overall



CA2

Cast Aluminum
18" x 7½"



C6

Extruded Aluminum
18" x 9"



C4

Extruded Aluminum
14" x 9"



C17

Extruded Aluminum
18" x 7½"



D5G

10" 4 Ply Pneumatic
2 pc. steel hub
Precision bearings



D6

10" x 3" Pro Flex
No flat - Carefree®
2 year warranty!



D6SS

10" Carefree
Solid foam
2 year warranty!



D15

D16

10" & 8" Available
Lightweight
"Pro Flex" wheel
2 year warranty!



E1L

Extruded Aluminum
2 Year Warranty



NEW

E1E

Extruded Aluminum
"Ergo" Design
2 Year Warranty



E1C

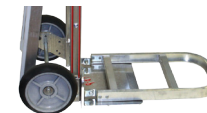
Cast Aluminum
1 Year Warranty

4th Wheel Attachment



Folding Nose

30" Tubular
36" Tubular
44" Tubular



20" Extruded
30" Extruded

Bulk Delivery - System



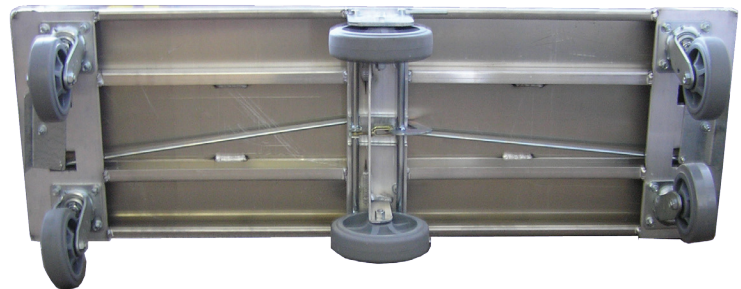
- Pre-load each cart by account at warehouse. Carry only what you need, reducing fuel costs and weight. Stretch wrap in warehouse or use our containment curtain.
- Load straight truck by route delivery locations and unload accordingly.
- Use the cart to bring the product straight from the truck to the final location.
- Eliminate on street picking from costly bay trucks, keeps products out of the elements and reduces the amount of employee lifting and bending.
- Average 40-50 cases of product per cart instead of 10 per hand truck -- Reducing the number of trips by 400%.
- Use straight trucks instead of more expensive bay trucks. Have a lower initial cost and lower maintenance costs.
- Faster check-in time, reduces account service time by up to 50% and increases customer satisfaction.

Bulk Delivery - System



Minimize Risk of Accidents...

- Optional brake system locks both center wheels to prevent movement while loading/unloading. Carts stay in place while being transported or unattended. Brakes can be set from both sides and both ends for convenience.
- Ergonomic round handle is easier on driver's hands.
- Heavy duty understructure reduces risk of injuries and spills due to caster failure.
- Widest wheelbase in the industry. Makes the cart more stable.
- One piece formed deck eliminates "peeling" that can cause product damage and driver injury.
- Exclusive cover system contains product even with one side open. Helps protect product from shifting during transportation.



Maximize Return on your Investment...

- Handles are reinforced and heat treated reducing the risk of bending. Welded design won't loosen over time like riveted designs.
- One piece deck eliminates peeling of the top skin, broken welds and prevents waving and warping inherent in welded deck designs.
- Caster plates are full width and full perimeter welded reducing damage caused to carts by twisting during use.
- Heavy duty support structure for center wheels reduces risk of failure compared to caster designs.
- Full length stringers are integrated into deck providing additional strength and support.
- Corner pockets are fully welded preventing them from breaking out.
- Industry exclusive 3 Year Warranty

Sprinter Delivery System

Carts



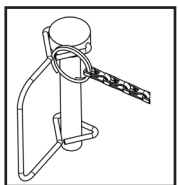
Fwd Cart | Part#: 5018-004



Aft Cart | Part#: 5018-005

Parts

Fwd Cart Brace



Left Part#5018-006
Right Part#5018-007

Mid Cart Brace



Left Part#5018-010
Right Part#5018-011

Aft Cart Brace



Left Part#5018-009
Right Part#5018-008

Tropicana Sprinter Delivery System

You've Seen the Parts – Here's How it Works!



Our cart system goes into a custom Mercedes Sprinter van.

The cargo area of the van is upfitted to use a fiberglass liner kit and refrigeration unit.

Tropicana/Pepsico is purchasing 171 of these vans this year – all will use our system.



Our brace system goes in next, these attach to the floor, ceiling and sidewall of the van.



There is a forward, mid and aft brace – left side and right side.



Our carts are custom fit to match the contour of the van.

Each van has 4 carts, 2 forward and 2 aft – sized to fit over the wheel well.

The shelves are spaced to fit the different sizes of juice they deliver.

The aft brace shelf folds down and pivots to be used as a staging area for picking orders.

The middle shelf on each cart hinges up out of the way when empty to improve interior space.

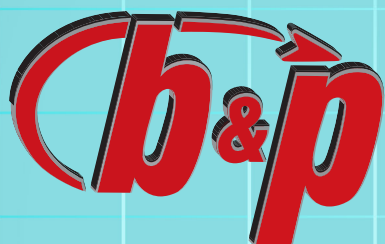
Each cart is hitch pinned to the braces – this is the only form of securement, no tie down straps are needed.

The carts are loaded in the warehouse and rolled into the van each day for delivery.

We manufacture the highest quality delivery products, guaranteed! We're so confident, we offer a no obligation demo program. Order our products and try them risk free, for 30 days. If you don't agree that they are simply the best products available, we will take them back!

Contact us today for more details.

**For Your Nearest Distributor:
Call 1-800-334-7141 or www.bpmfg.com/storelocator**



Manufacturing

Engineered Delivery Products



**(800)-334-7141
(231)-775-2229
(231)-775-0013 (fax)**



www.bpmfg.com



bpsales@bpmfg.com



**8051 E. Boon Road
Cadillac, MI 49601
U.S.A.**



Liberator