



2018 Product Catalog



- **B&P Manufacturing has been engineering and building the highest quality material handling products since 1943 where we began as Brooks and Perkins. Since then our products and processes have seen dramatic changes in order to keep in step with rapid advances in the industries our products serve.**
- **In 1996, the entire product line was re-engineered to replace old designs with newer, lighter weight and more durable designs. We continue to make major investments in new equipment, software and engineering personnel with one goal in mind; to offer our customer the best built, best backed products in the industry. As a result, we offer an industry exclusive two year warranty against manufacturers defects.**
- **In recent years we have focused on our company as a whole beyond the products we sell. We have received ISO 9001 Certification, WBE Certification, AWS Certification and are HUB Zone Certified, helping you achieve your supplier diversity goals with the best quality standards.**
- **B&P Manufacturing believes that good corporate citizenship is essential for the success of the company. We regularly make donations to our local charities as well as on a national level. We have donated hundreds of pink hand trucks to breast cancer awareness events, we are proud to support this and many other worthwhile causes.**
- **By continuing to work with drivers all over the country, we are able to engineer our products to be more ergonomically correct, reducing driver fatigue and risk of injury. Our products allow drivers to deliver more product, with increased efficiency.**
- **Our streamlined process and inventory levels of both raw materials and completed goods are expertly maintained. Whether you need one handle or 5,000 hand trucks, we respond quickly to your needs.**
- **Quite simply, our goal is to solve our customers toughest delivery challenges with the highest quality products made by our dedicated team of men and women here in Northern Michigan.**





A2-B1#01-C6-D6SS-E1L#01-E60

Build A Liberator Hand Truck.....	2-15
Handles.....	2-5
Frames.....	6
Nose Plates.....	7
Wheels.....	8-9
Accessories.....	9-12
Build A Crusader Hand Truck.....	13-18
Liberator Brake Hand Truck.....	19-21
Build A Liberator Convertible Hand Truck.....	22-23
S-Series.....	24
Standard Capacity Hand Trucks.....	24
Standard Capacity Convertible Hand Trucks.....	24
Specialty Hand Trucks.....	25-26
Luggage Handler Hand Truck.....	25
Narrow Aisle Hand Truck.....	25
Three Way Hand Truck.....	25
Snack Food Delivery Hand Truck.....	26
Folding Snack Hand Truck.....	26
Telescoping Bin Delivery Hand Truck.....	26
Specialty Carts.....	27
Studio Cart.....	27
Commercial Ice Cart.....	27
Bulk Delivery Carts.....	28-31
Jr. Bulk Delivery Cart.....	28
Universal Bulk Delivery Cart.....	28
Heavy Duty Bulk Delivery Carts.....	29-30
Walkie Rider Bulk Delivery Cart.....	31
Warehouse Bulk Delivery Cart.....	31
Aluminum Platform Trucks.....	32-33
Aluminum Hand Truck Curb Ramps.....	34
Aluminum Hand Truck Boards.....	35
Smooth Non-Skid Curb Ramp.....	35
Pallet Jack Curb Ramp.....	36
Aluminum Wheel Ramps.....	36
Food Service Walk Ramps.....	37
Walk Ramps.....	38-39
Twin Tooth Traction Walk Ramps.....	38
Punched Traction Walk Ramps.....	39
Steel Curb Dock Boards.....	40-41
Aluminum Dock Plates.....	42-43
Aluminum Pallet Dollies.....	44

Two Year Limited Warranty

B&P Manufacturing warrants to the original purchaser that the items covered by this agreement shall be free from defects in material and workmanship under normal use and service for a period of two (2) years from the date of shipment to the purchaser. If within such a period any product is proved to be defective, the product shall be repaired or replaced at the manufacturer's discretion. B&P Manufacturing's obligation is limited to repair and replacement and is conditioned upon receiving a written notice of the alleged defects within the two (2) year warranty period and no more than ten (10) days after its discovery. After written approval by B&P Manufacturing, the product or defective part must be returned to B&P Manufacturing, FOB, its factory. The term "original purchaser" as used in this warranty shall mean the person or entity to which product was shipped by B&P Manufacturing, its distributor or agent.

This warranty does not apply to parts subject to wear, parts not manufactured by B&P Manufacturing, or to products or parts repaired or altered by any entity other than B&P Manufacturing. It also does not cover defects or damage due to negligence, accident, abuse, or misuse.

Parts that are not covered under the two (2) year warranty are: tires, inner tubes, wheels (unless expressly specified otherwise in our literature), bearings, casters, phenolic rollers, cast nose plates, cast axle brackets, cast stair climbers, accessory bags and lift chains. The warranty obligations of B&P Manufacturing shall in all respects conform and be limited to the warranty actually extended to B&P Manufacturing by the supplier.

BUILD A LIBERATOR HAND TRUCK



A2-B4-C1-D15-E1L-E60

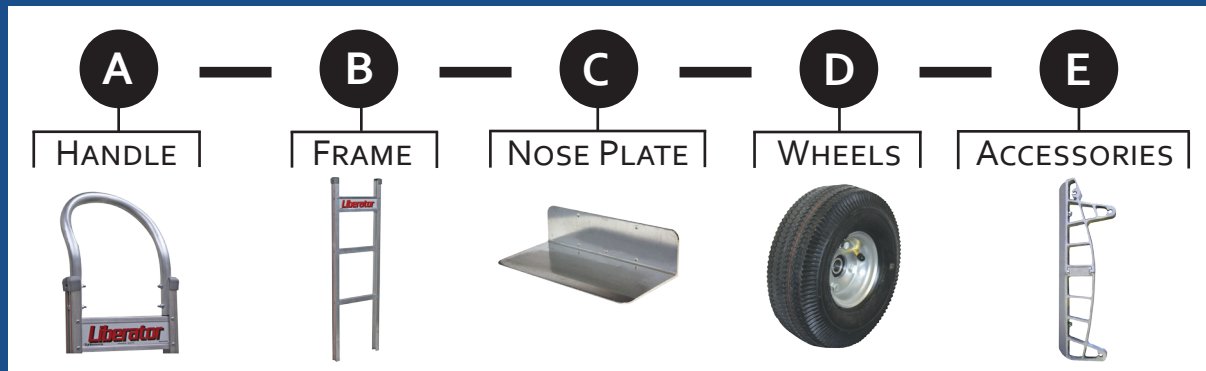
A11-B1-C6-D5-E1E-E55

- Wheels - Highest quality with up to a 2 year warranty
- Extruded Axle Brackets - Lifetime warranty
- Axle - 91,000 PSI tensile steel
- Nose Plate - Extruded aluminum for longer life
- Frame - 600 lbs capacity and available with industry exclusive powder coat option
- Cross Members - Four sided ribbed construction
- Rivets - 700 lbs aircraft grade
- Handles – Ergonomically designed in several styles, some of which are welded and heat treated for extra strength
- Logo Channel - For company personalization
- Parts are interchangeable with most competitors' models

BUILD A CUSTOM LIBERATOR HAND TRUCK

Designing your custom Liberator hand truck is easy. Select one component from each section to create a hand truck specific for your needs. Build your custom part number as shown below.

Example: A1-B1-C6-D5-E1L



Flared Double Pin Grip Handles



P/N	Description	Overall Height
A11	Standard Double Grip with U-Brace	48"
A40	Sq. Loop w/Flared Double Grips & Cross Member -HT	52"
A41	Sq. Loop w/Flared Double Grips & Cross Member -HT	55"
A19	Sq. Loop w/Flared Double Grips -HT	62"
A42	Sq. Loop w/Flared Double Grips & 2 Cross Member	62"

HT = Heat Treated for Superior Strength

Vertical Grip Handles

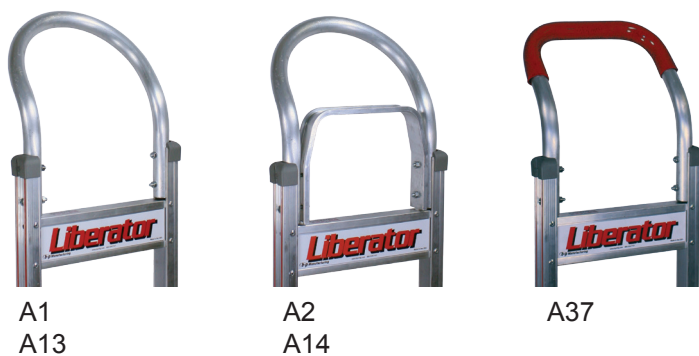


Add "S" to the end of the P/N to add the Comfort Sleeve to Vertical Grip Handles

P/N	Description	Overall Height
A7	Straight Loop, Vertical Grip	52"
A10	Straight Loop, Vertical Grip for Curved Frame	52"
A8	Straight Loop, Vertical Grip at 52"	60"
A25	Straight Loop, Vertical Grip at 52", Curved Frame	60"
A51	Straight Loop, Vertical Grip & 2 Curved Cross Members*	60"
A9	Straight Loop, Vertical Grip at 52"	68"

*= Not available with brakes

Loop Handles



P/N	Description	Overall Height
A1	Standard Loop	50"
A13	Standard Loop with Comfort Sleeve	50"
A2	Standard Loop with U-Brace	50"
A14	Standard Loop w/U-Brace and Comfort Sleeve	50"
A37	Standard Loop, Square Top w/Comfort Sleeve	50"

A HANDLE

Single Pin Grip Handles



A12



A3



A4



A5



A6

P/N	Description	Overall Height
A12	Square Loop, Single Pin Grip -HT	52"
A3	Square Loop, Single Pin Grip at 46" -HT	52"
A4	Square Loop, Single Pin Grip at 46" -HT	55"
A49	Sq. Loop, w/Curved Cross Member, Single Pin Grip at 46" -HT*	55"
A5	Square Loop, Single Pin Grip at 46"	62"
A65	Sq. Loop w/Loop Cross Member, Single Pin Grip at 46" -HT*	62"
A64	Sq. Loop w/Straight & Loop Cross Member , Single Pin Grip at 46" -HT*	62"
A6	Square Loop, Single Pin Grip at 46" -HT	68"

HT = Heat Treated for Superior Strength

*= Not available with brakes



A49



A65
A64

Horizontal Grip Handles



A52



A67



A67M

P/N	Description	Overall Height
A52	Sq. Loop w/Horizontal Grip, Brace & 2 Cross Members -HT	62"
A67	Sq. Loop w/Horizontal Grip, Brace, 2 Cross Members & Pull Back Loop -HT	62"
A67M	Sq. Loop w/Horizontal Grip, Brace, 2 Cross Members and 2 Pull Back Loops -HT	62"

HT = Heat Treated for Superior Strength

Double Vertical Grip Handles



A47



A31S



A56S



A57S



A69S



A57SM



A66



A70S

P/N	Description	Overall Height
A47	Sq. Loop w/Double Vertical Grips & Cross Member -HT	55"
A31S	Sq. Loop w/Double Vertical Grips -HT	55"
A56S	Sq. Loop w/Double Vertical Grips -HT	62"
A57S	Sq. Loop w/Double Vertical Grips & 2 Cross Members -HT	62"
A57SM	Sq. Loop w/Double Vertical Grips, 2 Cross Members & Top Pin- HT (Height is without pin)	62"
A69S	Sq. Loop w/Double Vertical Grips, 2 Cross Members & Pull Back Loop -HT	62"
A66	Sq. Loop w/Double Vertical Grips, Cross Member w/Pin -HT	62"
A70S	Sq. Loop w/Double Vertical Grips, 3 Cross Members & Pull Back Loop -HT	68"

HT = Heat Treated for Superior Strength

Double Flared Loop Grip Handles



A15
A16

P/N	Description	Overall Height
A15	Straight Loop w/Flared Double Vertical Loop Grips*	55"
A16	Straight Loop w/Flared Double Vertical Loop Grips*	60"

*= Not available with brakes

BUILD A LIBERATOR HAND TRUCK

B FRAME

Straight Back



To order a colored/powder coated frame add to your part number:

Blue
#01

Red
#02

Green
#06

Minimum quantities may apply

P/N	Description
B1	Standard Straight Back, No Strap
B2	Straight Back with 1 Vertical Strap
B3	Straight Back with 2 Vertical Straps
B10*	Straight Back, No Logo Channel, No Red Striping

*B10 frame has a 500 lbs capacity

Curved Back



P/N	Description
B4	Curved Back, with 1 Strap
B5	Curved Back, No Strap

P/N	Description
B5K	Curved Back with Sliding Keg Hook
B5MK	Curved Back w/ Adjustable Sliding Keg Hook

Straight-Curved Combo



P/N	Description
B6	Combination Back, 2 Straight, 1 Curved
B7	Combination Back, 1 Straight, 2 Curved

Severe Duty

- Extruded "I-beam" style cross members
- Cross members are bolted through the outside of the rails for increased strength



P/N	Description
B1SD	Severe Duty Straight Back, No Strap
B2SD	Severe Duty Straight Back, with 1 Vertical Strap
B17SD	Severe Duty, Straight Back Ergo*
B18SD	Severe Duty, Straight Back Ergo with 1 Vertical Strap*

* Ergo Frames add 6-5/16" to overall hand truck height

Ergo

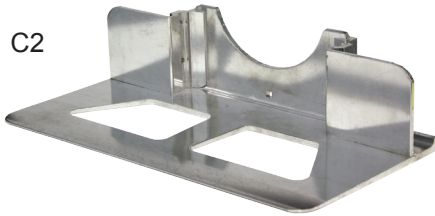
- Extra tall frames



P/N	Description
B17	Straight Back, Ergo*
B18	Straight Back, Ergo with 1 Vertical Strap*

* Ergo Frames add 6-5/16" to overall hand truck height

Extruded Aluminum Recessed Heel



P/N	Description	Width x Depth
C1	Recessed Heel w/cutouts, Extruded Aluminum	14" x 7- 1/2"
C19	Recessed Heel, Extruded Aluminum	14" x 7- 1/2"
C7	Recessed Heel w/ Cutouts, Extruded Aluminum	14" x 10- 1/2"
C2	Recessed Heel w/ Cutouts, Extruded Aluminum	18" x 7- 1/2"
C20	Recessed Heel , Extruded Aluminum	18" x 7- 1/2"
C15	Recessed Heel w/ Cutouts, Extruded Aluminum	18" x 10- 1/2"

Extruded Aluminum Front Mount



P/N	Description	Width x Depth
C16	Front Mount, Extruded Aluminum	14" x 7- 1/2"
C12	Front Mount w/Cutouts, Extruded Aluminum	14" x 7- 1/2"
C4	Front Mount, Extruded Aluminum	14" x 9"
C8	Front Mount, Extruded Aluminum	16" x 12"
C17	Front Mount, Extruded Aluminum	18" x 7- 1/2"
C13	Front Mount w/Cutouts, Extruded Aluminum	18" x 7- 1/2"
C6	Front Mount, Extruded Aluminum	18" x 9"
C26	Front Mount, w/ Cutouts, Extruded Aluminum	18' x 9"
C14	Front Mount, Extruded Aluminum	18" x 12"
C10	Front Mount, Extruded Aluminum	20" x 9"
C9	Front Mount, Extruded Aluminum	20" x 12"

Cast Aluminum Recessed Heel



P/N	Description	Width x Depth
CA1*	Recessed Heel w/ Cutouts, Cast	14" x 7- 1/2"
CA2*	Recessed Heel w/ Cutouts, Cast	18" x 7- 1/2"
CA3*	Recessed Heel w/ Cutouts, Cast	14" x 12"

* All cast aluminum nose plates have a 500 lbs capacity and 1 year warranty

Extruded Aluminum Rear Mount



P/N	Description	Width x Depth
C3	Rear Mount, Extruded Aluminum	14" x 7- 1/2"
C5	Rear Mount, Extruded Aluminum	18" x 9"

Steel Recessed -or- Front Mount



P/N	Description	Width x Depth
C29	Recessed Mount, Steel	14" x 7- 1/2"
C28	Recessed Mount, Steel	18" x 7- 1/2"
C21	Front Mount, Steel	14" x 9"
C22	Front Mount, Steel	18" x 9"

BUILD A LIBERATOR HAND TRUCK

D WHEELS

Pneumatic



- Heavy duty steel hub
- Four ply construction
- Precision sealed bearings
- **Recommended uses:**
 - Outdoor surfaces such as gravel, grass, & sand
 - Inclement conditions such as snow, slush or mud
 - Applications requiring superior shock absorption
 - Rough or uneven surfaces

P/N	Description	Diameter x Width	Capacity* (per wheel)	Weight
D5	4 Ply Pneumatic, 2 Pc. Steel Hub, Precision Bearings	10" x 3- 1/2"	350 lbs	4.4 lbs
D5F	D5 Foam Filled- Can't Go Flat	10" x 3- 1/2"	350 lbs	7.0 lbs
D5G	D5 in Gray Color, Non-marking	10" x 3- 1/2"	350 lbs	4.4 lbs
D5S	D5 with Slime Sealant	10" x 3- 1/2"	350 lbs	5.0 lbs

Carefree®



- **Non-marking**
- Open/closed cell construction no flat foam
- One piece steel hub
- **Two year warranty**
- Precision sealed bearings
- Great choice if you want to avoid flat tires
- **Recommended uses:**
 - Outdoor surfaces such as gravel, grass, & sand
 - Rough or uneven surfaces
 - Inclement conditions such as snow, slush or mud

P/N	Description	Diameter x Width	Capacity* (per wheel)	Weight
D6	Carefree, No Flat Solid Foam, Non -marking	10" x 3"	350 lbs	4.2 lbs

Performance TPR



- **Non-marking**
- Recessed bearing
- Dark Gray
- Durable poly hub
- Precision sealed bearing for short axle applications
- **Recommended uses:**
 - Smooth/semi smooth, hard surfaces
 - General purpose
 - Delicate floor, tile, carpet

P/N	Description	Diameter x Width	Capacity* (per wheel)	Weight
D1	High Performance, Non-marking, Gray	8" x 2"	500 lbs	2 lbs



- **Non-marking**
- Lightweight poly hub
- Poly tread compound
- Precision sealed bearings
- **Two year warranty**
- **Recommended uses:**
 - Smooth/semi smooth, hard surfaces
 - General purpose
 - City deliveries - side walk & concrete
 - Delicate floor, tile, & carpet

P/N	Description	Diameter x Width	Capacity* (per wheel)	Weight
D15	Balloon Cushion, Poly Hub, Precision Bearings, Dark Gray	10" x 2- 1/8"	350 lbs	2.3 lbs
D16	Balloon Cushion, Poly Hub, Precision Bearings, Dark Gray	8" x 2- 1/8"	350 lbs	1.6 lbs



- **Non-marking**
- Our Exclusive hand truck tire **®**
- **Two year warranty**
- Lightweight poly hub
- Durable and lightweight
- Great choice if you need a wheel that won't go flat but has more shock absorption than a foam filled tire
- **Recommended uses:**
 - Outdoor surfaces such as gravel, grass, & sand
 - Rough or uneven surfaces
 - Inclement conditions such as snow, slush or mud

P/N	Description	Diameter x Width	Capacity* (per wheel)	Weight
D6SS	Carefree, Poly tread, Non-marking	10" x 3"	350 lbs	3.1 lbs



- Molded on rubber
- Light weight
- Short axle applications
- **Recommended uses:**
 - Smooth/semi smooth, hard surfaces
 - General purpose

P/N	Description	Diameter x Width	Capacity* (per wheel)	Weight
D12	Rubber on Aluminum, Offset Hub	8" x 1-5/8"	550 lbs	2.1 lbs

Balloon Cushion

Carefree®

Rubber

WHEELS

D

Semi-Pneumatic



- **Recommended uses:**
 - Smooth/semi smooth, hard surfaces
 - General purpose



- **Recommended uses:**
 - Smooth/semi smooth, hard surfaces
 - General purpose

Pneumatic

P/N	Description	Diameter x Width	Capacity* (per wheel)	Weight
D2	Semi-Pneumatic, 1 Pc. Plastic Hub	10" x 2"	440 lbs	6.4 lbs

P/N	Description	Diameter x Width	Capacity* (per wheel)	Weight
D9	Pneumatic, 2 pc. Steel Hub	8" x 2-1/2"	297 lbs	2.9 lbs

***Note: Wheel Capacity is for reference only, never exceed rated hand truck capacity (600 lbs, unless otherwise noted).**

ACCESSORIES

E

(Shown with A13 Handle)

E62S



E68SL



- More comfortable than channel designs
- Heat treated for twice the strength
- No need for sleeves
- 2" wide straps keep products from falling through
- Fits A1, A2, A11, A13, A14 and A37 handles and competitors hand trucks

P/N	Description
E62S	Tubular Frame Extension, 62" Overall Height, 2 Straps
E62SL	Tubular Frame Extension, 62" Overall Height, 2 Straps, 1 Diagonal Loop
E68S	Tubular Frame Extension, 68" Overall Height, 2 Straps
E68SL	Tubular Frame Extension, 68" Overall Height, 2 Straps, 1 Diagonal Loop



E45



E52



E60

(Shown with A1 Handle)



E11

- Adds height to increase leverage
- Fits A1, A2, A11, A13, A14 and A37 handles and competitors hand trucks

P/N	Description
E45	Frame Extension, 45" Overall Height
E52	Frame Extension, 52" Overall Height
E55	Frame Extension, 55" Overall Height
E60	Frame Extension, 60" Overall Height
E68	Frame Extension, 68" Overall Height
E11	Frame Extension Foam Sleeve

Frame Extensions

BUILD A LIBERATOR HAND TRUCK

E

ACCESSORIES

Stair Climbers



- Ergo stair climbers vertical geometry makes it easier to go up and down stairs
- High strength extruded aluminum with 15" reversible wear strip
- Built in mounting holes for E46E kick bar and E47E pull back bar

P/N	Description
E1E	Extruded Aluminum Ergo Stair Climbers



- Fits B&P trucks as well as most competitors
- Kit includes 2 stair climbers and hardware
- One year warranty

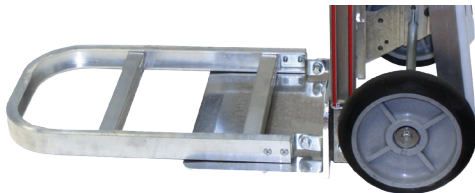
P/N	Description
E1C	Cast Aluminum Stair Climbers



- High Strength extruded aluminum with thick, extra long, reversible wear strip
- Kit includes 2 stair climbers and hardware
- Two year warranty

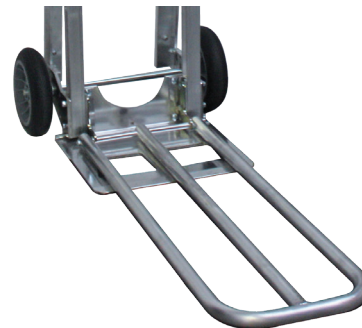
P/N	Description
E1L	Extruded Aluminum Stair Climbers

Folding Noses



P/N	Description	Capacity
E2F or E2R	Full Channel Extruded Folding Nose, 20"	300 lbs
E3F or E3R	Full Channel Extruded, Folding Nose, 30"	300 lbs

Order "F" for use with front mount nose plates
Order "R" for use with recessed heel or rear mount nose plates

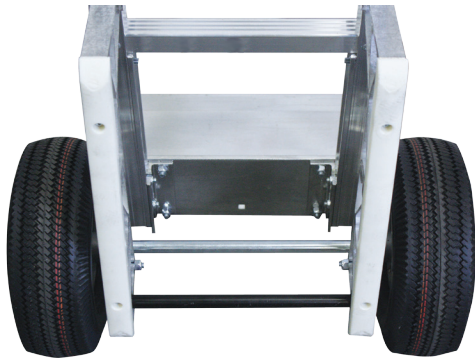


P/N	Description	Capacity
E4F or E4R	Tubular Folding Nose, 44"	110 lbs
E5F or E5R	Tubular Folding Nose, 36"	110 lbs
E6F or E6R	Tubular Folding Nose, 30"	110 lbs

Order "F" for use with front mount nose plates
Order "R" for use with recessed heel or rear mount nose plates



P/N	Description
E13	Alum. Kick Bar for E1L Stair Climbers w/10" Wheels - 1.49" Dia



P/N	Description
E46	Steel Kick Bar for E1L Stair Climbers w/10" Wheels - .63" Dia
E26	Steel Kick Bar for E1L Stair Climbers w/8" Wheels - .63: Dia
E46E	Steel Kick Bar for E1E "Ergo" Stair Climbers

- Pull back bar is spring loaded, retracts back out of the way after pulling the hand truck out from under the load



P/N	Description
E47	Pull Back Bar for E1L Stair Climbers
E47E	Pull Back Bar for E1E "Ergo" Stair Climbers

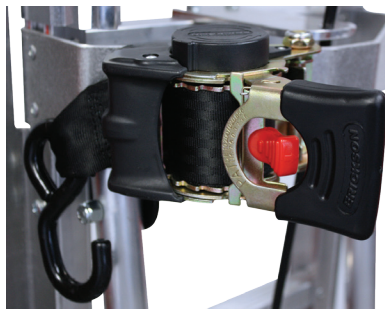


P/N	Description
E29*	Pull Bar for E1L, E1E Stair Climbers - .63 Dia Alum. w/Red Plastic Sleeve

* Not with 8" wheels



P/N	Description
E8	Wheel Guards, 7.38" H x 2-1/2" W
E8L	Wheel Guards, 12" H x 4" W



P/N	Description
E73	Retractable Ratchet Strap



P/N	Description
E9	Keg Hook for Sankey Style 1/2 Barrel

E ACCESSORIES

4th Wheel Attachment

- 4th wheel attachment takes the load off the operator
- Latch keeps the 4th wheel folded up and out of the way when not in use
- 600 lbs capacity
- Uses smooth rolling TPR casters



P/N	Description
E37L	Fourth Wheel Attachment, w/Latch (Not compatible with stair climbers or convertible hand trucks)

Bags



8218-001



8218-002

P/N	Description
8218-001	Hand Truck Accessory Bag 12" W x 18" H x 2" D
8218-002	Hand Truck Accessory Bag 12" W x 18" H x 3" D

Wings

- Wings add 4" to hand truck width
- SD (Severe Duty) wings are made from extruded aluminum for increased strength



E30 on B1 Frame

P/N	Description
E30	Frame Wings, 34" Long
E31	Frame Wings, 45" Long
E30SD	Frame Wings for Severe Duty Frames, 34" Long
E30ESD	Frame Wings for Ergo Severe Duty Frames, 40-1/2" Long



E30SD
on B1SD
Frame

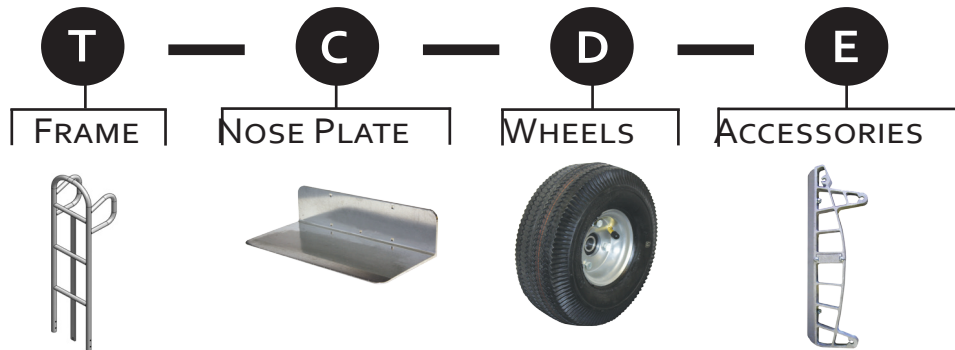


E30ESD
on B18SD
Frame

BUILD A CUSTOM CRUSADER HAND TRUCK

Designing your custom Crusader hand truck is easy. Select one component from each section to create a hand truck specific for your needs. Build your custom part number as shown below.

Cusader Example: T01-C6-D5-E1L



T08-C3-D5-E1E

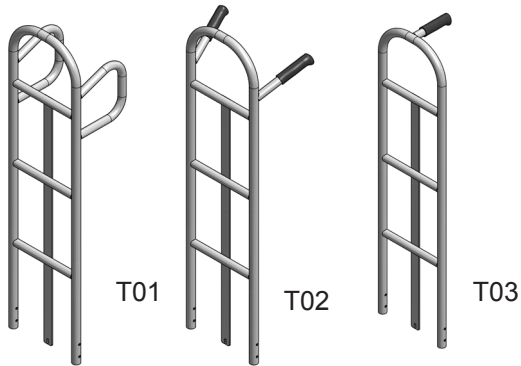


T04-C29-D5-E1E

- Aluminum Frame - Heat treated for superior strength.
- Several Frame Choices - Straight back or curved with several handle choices.
- Perfect fit cross members.
- Stable wheel base.
- Quality Welds - TIG welds for strength and assembled in fixtures for consistency.
- Wheels - Highest quality with up to a 2 year warranty.
- Extruded Axle Brackets - With a lifetime warranty.
- Axle - 91,000 PSI tensile steel.
- Nose Plate - Several choices available.
- 600 lbs. capacity depending on options ordered.

T HANDLE/FRAME

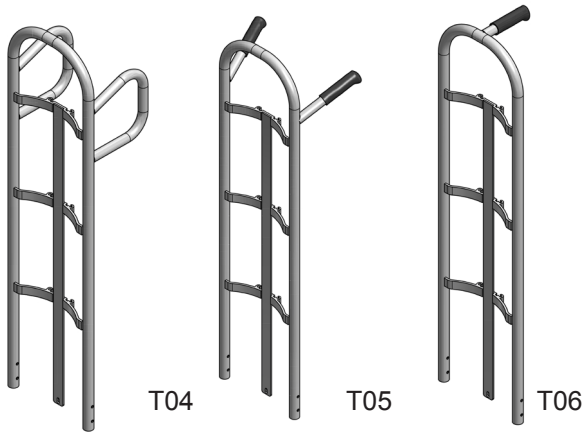
Straight Back



P/N	Description
T01	Straight Back with Double Loop Handle
T02	Straight Back with Double Pin Handle
T03	Straight Back with Single Pin Handle

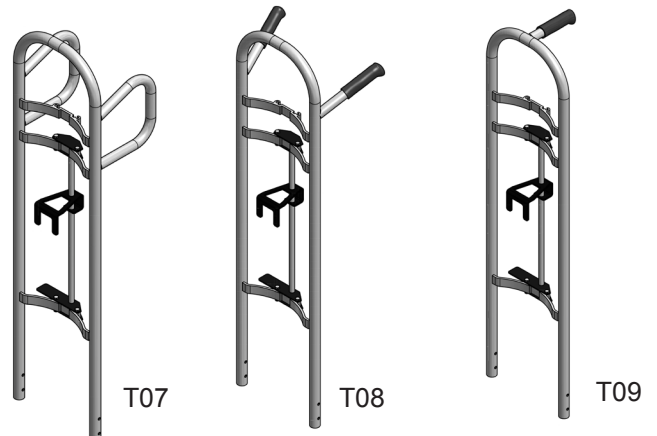


Curved Back



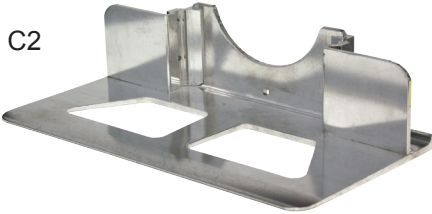
P/N	Description
T04	Curved Back with Double Loop Handle
T05	Curved Back with Double Pin Handle
T06	Curved Back with Single Pin Handle

Sliding Keg Hook



P/N	Description
T07	Sliding Keg Hook/Curved Back with Double Loop Handle
T08	Sliding Keg Hook/Curved Back with Double Pin Handle
T09	Sliding Keg Hook/Curved Back with Single Pin Handle

Extruded Aluminum Recessed Heel



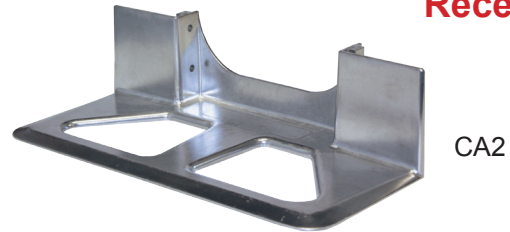
P/N	Description	Width x Depth
C1	Recessed Heel w/cutouts, Extruded Aluminum	14" x 7- 1/2"
C19	Recessed Heel, Extruded Aluminum	14" x 7- 1/2"
C7	Recessed Heel w/ Cutouts, Extruded Aluminum	14" x 10- 1/2"
C2	Recessed Heel w/ Cutouts, Extruded Aluminum	18" x 7- 1/2"
C20	Recessed Heel , Extruded Aluminum	18" x 7- 1/2"
C15	Recessed Heel w/ Cutouts, Extruded Aluminum	18" x 10- 1/2"

Extruded Aluminum Front Mount



P/N	Description	Width x Depth
C16	Front Mount, Extruded Aluminum	14" x 7- 1/2"
C12	Front Mount w/Cutouts, Extruded Aluminum	14" x 7- 1/2"
C4	Front Mount, Extruded Aluminum	14" x 9"
C8	Front Mount, Extruded Aluminum	16" x 12"
C17	Front Mount, Extruded Aluminum	18" x 7- 1/2"
C13	Front Mount w/Cutouts, Extruded Aluminum	18" x 7- 1/2"
C6	Front Mount, Extruded Aluminum	18" x 9"
C26	Front Mount, w/ Cutouts, Extruded Aluminum	18' x 9"
C14	Front Mount, Extruded Aluminum	18" x 12"
C10	Front Mount, Extruded Aluminum	20" x 9"
C9	Front Mount, Extruded Aluminum	20" x 12"

Cast Aluminum Recessed Heel



P/N	Description	Width x Depth
CA1*	Recessed Heel w/ Cutouts, Cast	14" x 7- 1/2"
CA2*	Recessed Heel w/ Cutouts, Cast	18" x 7- 1/2"
CA3*	Recessed Heel w/ Cutouts, Cast	14" x 12"

* All cast aluminum nose plates have a 500 lbs capacity and 1 year warranty

Extruded Aluminum Rear Mount



P/N	Description	Width x Depth
C3	Rear Mount, Extruded Aluminum	14" x 7- 1/2"
C5	Rear Mount, Extruded Aluminum	18" x 9"

Steel Recessed -or- Front Mount



P/N	Description	Width x Depth
C29	Recessed Mount, Steel	14" x 7- 1/2"
C28	Recessed Mount, Steel	18" x 7- 1/2"
C21	Front Mount, Steel	14" x 9"
C22	Front Mount, Steel	18" x 9"

BUILD A CRUSADER HAND TRUCK

D WHEELS

Pneumatic



- Heavy duty steel hub
- Four ply construction
- Precision sealed bearings
- **Recommended uses:**
 - Outdoor surfaces such as gravel, grass, & sand
 - Inclement conditions such as snow, slush or mud
 - Applications requiring superior shock absorption
 - Rough or uneven surfaces

P/N	Description	Diameter x Width	Capacity* (per wheel)	Weight
D5	4 Ply Pneumatic, 2 Pc. Steel Hub, Precision Bearings	10" x 3- 1/2"	350 lbs	4.4 lbs
D5F	D5 Foam Filled- Can't Go Flat	10" x 3- 1/2"	350 lbs	7.0 lbs
D5G	D5 in Gray Color, Non-marking	10" x 3- 1/2"	350 lbs	4.4 lbs
D5S	D5 with Slime Sealant	10" x 3- 1/2"	350 lbs	5.0 lbs

Carefree®



- **Non-marking**
- Open/closed cell construction no flat foam
- One piece steel hub
- **Two year warranty**
- Precision sealed bearings
- Great choice if you want to avoid flat tires
- **Recommended uses:**
 - Outdoor surfaces such as gravel, grass, & sand
 - Rough or uneven surfaces
 - Inclement conditions such as snow, slush or mud

P/N	Description	Diameter x Width	Capacity* (per wheel)	Weight
D6	Carefree, No Flat Solid Foam, Non -marking	10" x 3"	350 lbs	4.2 lbs

Performance TPR



- **Non-marking**
- Recessed bearing
- Dark Gray
- Durable poly hub
- Precision sealed bearing for short axle applications
- **Recommended uses:**
 - Smooth/semi smooth, hard surfaces
 - General purpose
 - Delicate floor, tile, carpet

P/N	Description	Diameter x Width	Capacity* (per wheel)	Weight
D1	High Performance, Non-marking, Gray	8" x 2"	500 lbs	2 lbs



- **Non-marking**
- Lightweight poly hub
- Poly tread compound
- Precision sealed bearings
- **Two year warranty**
- **Recommended uses:**
 - Smooth/semi smooth, hard surfaces
 - General purpose
 - City deliveries - side walk & concrete
 - Delicate floor, tile, & carpet

P/N	Description	Diameter x Width	Capacity* (per wheel)	Weight
D15	Balloon Cushion, Poly Hub, Precision Bearings, Dark Gray	10" x 2- 1/8"	350 lbs	2.3 lbs
D16	Balloon Cushion, Poly Hub, Precision Bearings, Dark Gray	8" x 2- 1/8"	350 lbs	1.6 lbs

Balloon Cushion



- **Non-marking**
- Our Exclusive hand truck tire [®]
- **Two year warranty**
- Lightweight poly hub
- Durable and lightweight
- Great choice if you need a wheel that won't go flat but has more shock absorption than a foam filled tire
- **Recommended uses:**
 - Outdoor surfaces such as gravel, grass, & sand
 - Rough or uneven surfaces
 - Inclement conditions such as snow, slush or mud

P/N	Description	Diameter x Width	Capacity* (per wheel)	Weight
D6SS	Carefree, Poly tread, Non-marking	10" x 3"	350 lbs	3.1 lbs

Rubber



- Molded on rubber
- Light weight
- Short axle applications
- **Recommended uses:**
 - Smooth/semi smooth, hard surfaces
 - General purpose

P/N	Description	Diameter x Width	Capacity* (per wheel)	Weight
D12	Rubber on Aluminum, Offset Hub	8" x 1-5/8"	550 lbs	2.1 lbs

WHEELS D

Semi-Pneumatic



- **Recommended uses:**
- Smooth/semi smooth, hard surfaces
- General purpose

P/N	Description	Diameter x Width	Capacity* (per wheel)	Weight
D2	Semi-Pneumatic, 1 Pc. Plastic Hub	10" x 2"	440 lbs	6.4 lbs



- **Recommended uses:**
- Smooth/semi smooth, hard surfaces
- General purpose

P/N	Description	Diameter x Width	Capacity* (per wheel)	Weight
D9	Pneumatic, 2 pc. Steel Hub	8" x 2-1/2"	297 lbs	2.9 lbs

Pneumatic

***Note: Wheel Capacity is for reference only, never exceed rated hand truck capacity (600 lbs, unless otherwise noted).**

ACCESSORIES E

Stair Climbers

- Ergo stair climbers vertical geometry makes it easier to go up and down stairs
- High strength extruded aluminum with 15" reversible wear strip
- Built in mounting holes for E46E kick bar and E47E pull back bar



P/N	Description
E1E	Extruded Aluminum Ergo Stair Climbers

- High Strength extruded aluminum with thick, extra long, reversible wear strip
- Kit includes 2 stair climbers and hardware
- Two year warranty



P/N	Description
E1L	Extruded Aluminum Stair Climbers

E ACCESSORIES



P/N	Description
E8	Wheel Guards, 7.38" H x 2-1/2" W
E8L	Wheel Guards, 12" H x 4" W

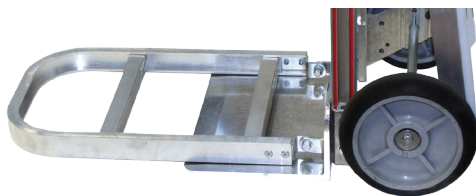
- Pull back bar is spring loaded, retracts back out of the way after pulling the hand truck out from under the load



Stair Climber Accessories

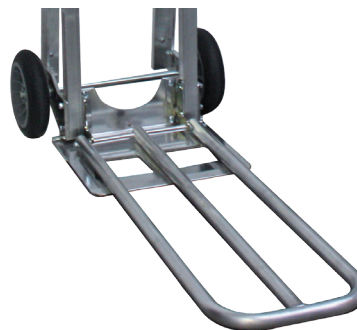
P/N	Description
E47	Pull Back Bar for E1L Stair Climbers
E47E	Pull Back Bar for E1E "Ergo" Stair Climbers

Folding Noses



P/N	Description	Capacity
E2F or E2R	Full Channel Extruded Folding Nose, 20"	300 lbs
E3F or E3R	Full Channel Extruded, Folding Nose, 30"	300 lbs

Order "F" for use with front mount nose plates
Order "R" for use with recessed heel or rear mount nose plates



P/N	Description	Capacity
E4F or E4R	Tubular Folding Nose, 44"	110 lbs
E5F or E5R	Tubular Folding Nose, 36"	110 lbs
E6F or E6R	Tubular Folding Nose, 30"	110 lbs

When you want total safe stopping power choose:

Disc Brake System

- High strength solid $\frac{3}{4}$ " axle standard
- Precision bearings for smooth rolling and long life
- Simplified design makes for easy maintenance when required
- Disc guards prevent damage to rotors
- Conversion kit available to retro fit competitor's models over to the B&P disc brake system
- "C" Bracket allows for fast removal of calipers
- Wheel, extruded hub and brake rotor are bolted together as a single piece
- Available Wheel Types: D5, D5G, D5F, D6, D6SS

When you need light weight load control choose:

Tread Brake System

- Designed to give you equal braking power even if tire pressure is low on one side
- Brake shoe design provides more leverage for better braking and won't lock up
- Brake shoes are powder coated for durability and corrosion resistance
- Can be retro fitted directly onto competitors models
- Will work with all wheel types

General Brake Information:

- Braking action is not affected by rain, snow or slush
- Available in a cable or T-rod design
- Pull bar design eliminates cotter pins
- Brake handle designs allow more adjustability to suit individual drivers hands
- 2 Year Warranty



A11-B1#01-C6-D5-E1EB-E46E-E60-BDT

A6-B2#02-C6-D5-E1EB#02-E47E-BDC

LIBERATOR BRAKE HAND TRUCK



DISC BRAKES

P/N	Description
BDC	Brakes, Double Disc with Cable Lever
BDT	Brakes, Double Disc with T-rod Lever

Add -P/N from the table above to the end of your custom Liberator part number to add disc brakes to your hand truck.

Double Disc Brake Features:

- Wheel, extruded hub and brake rotor are bolted together as a single piece
- “C” bracket allows for fast removal of calipers
- Wheel changes don’t require total hand truck disassembly
- Applies equal pressure to both calipers for even braking action
- Available with D5, D5F, D5S, D5G, D6 and D6SS style wheels



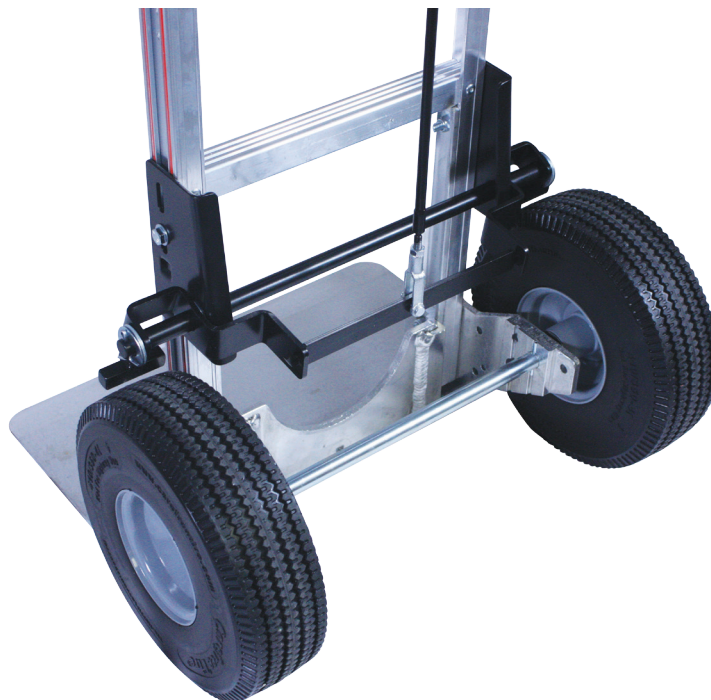
TREAD BRAKES

P/N	Description
BTC	Brakes, Tread with Cable Lever
BTT	Brakes, Tread with T-rod Lever

Add -P/N from the table above to the end of your custom Liberator part number to add tread brakes to your hand truck.

Tread Brake Features:

- Brake shoes provide more mechanical advantage for better braking
- Powder coated for durability and corrosion resistance
- Compatible with all wheels



CABLE BRAKE LEVERS

Cable Brake Lever Features:

- Better ergonomics for increased operator safety and efficiency
- Provides more leverage for better braking action
- Steel stops keep the brake lever from sagging over time
- Cable lever system is vinyl coated and threaded on the bottom to provide ease of adjustment

Loop



Flared Double
Pin Grip



Vertical Grip



Single Pin Grip



Double Vertical
Grip



Horizontal Grip

T-ROD BRAKE LEVERS

T-Rod Brake Lever Features:

- T-rod lever is powder coated for corrosion resistance
- T-rod lever system can be a more economic choice to the cable/lever design

Loop



Flared Double
Pin Grip



Vertical Grip



Single Pin Grip



Double Vertical
Grip



Horizontal Grip

BUILD A LIBERATOR CONVERTIBLE HAND TRUCK

Designing your custom Liberator convertible hand truck is easy. Select one component from each section to create a hand truck specific for your needs. Visit us online for more selections. Build your custom part number as shown below.
Example: A1-B81-C6-D6SS



SENIOR



JUNIOR



A-B HANDLE/FRAME

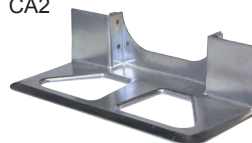
P/N	Handle	Frame	Capacity
A1-B80	Loop Handle	Senior Convertible Frame with 3 Cross Members	500 lbs
A13-B80	Loop Handle with Comfort Sleeve	Senior Convertible Frame with 3 Cross Members	500 lbs
A1-B81	Loop Handle	Senior Convertible Frame with 5 Cross Members	600 lbs
A13-B81	Loop Handle with Comfort Sleeve	Senior Convertible Frame with 5 Cross Members	600 lbs
A1-B88F	Loop Handle	Senior Convertible Frame with 5 Cross Members and center strap	600 lbs
A13-B88F	Loop Handle with Comfort Sleeve	Senior Convertible Frame with 5 Cross Members and center strap	600 lbs
B70	Double Ergo Grip Handle	Junior Convertible Frame with 4 Cross Members	600 lbs
B75	Double Ergo Grip Handle	Junior Convertible Frame with 2 Cross Members	500 lbs



C NOSE PLATE

P/N	Description	Width x Depth
C2	Recessed Heel w/ Cutouts, Extruded Aluminum	18" x 7- 1/2"
CA1*	Recessed Heel w/ Cutouts, Cast	14" x 7- 1/2"
CA2*	Recessed Heel w/ Cutouts, Cast	18" x 7- 1/2"
C6	Front Mount, Extruded Aluminum	18" x 9"

CA1
CA2



C2



C6



* 500 lbs Capacity

BUILD A LIBERATOR CONVERTIBLE HAND TRUCK

SPECIFICATIONS

	Senior	Junior
Overall Width	20"	20"
Frame Width	12"	12"
Overall Length (Platform Mode)	56"	47"
Height as a Hand Truck	61- 1/2"	52"
Height as a Platform Truck	46"	41"
Platform Bed Length	51- 1/2"	38- 1/4"

SPECIFICATIONS

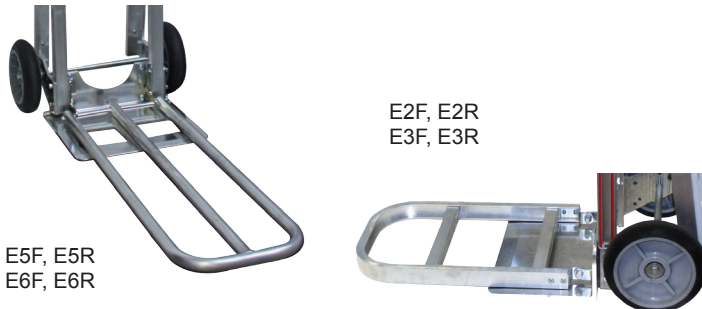
	Senior	Junior
Platform Height from the Floor	11"	11"
Weight w/CA1 and D15	47 lbs	45 lbs
Casters	5" Balloon Swivel Casters	5" Balloon Swivel Casters
Capacity - as Hand Truck	600 lbs	600 lbs
Capacity - as Platform Truck	1,200 lbs	1,200 lbs

WHEELS D



P/N	Description	Diameter x Width	Capacity	Weight
D5	4 Ply Pneumatic, 2 Pc. Steel Hub, Precision Sealed Bearings	10" x 3- 1/2"	600 lbs	4.6 lbs
D6SS	Super Carefree, No Flat Solid Foam, Non-marking	10" x 3"	600 lbs	3.2 lbs
D6	Carefree, No Flat Solid Foam, Non-marking	10" x 3"	600 lbs	4.5 lbs
D15	Balloon Cushion, Poly Hub, Precision Sealed Bearings	10" x 2- 1/8"	600 lbs	2.2 lbs

ACCESSORIES E



P/N	Description	Capacity
E5F or E5R	Tubular Folding Nose, 36"	110 lbs
E6F or E6R	Tubular Folding Nose, 30"	110 lbs
E2F or E2R	Full Channel Extruded Folding Nose, 20"	300 lbs
E3F or E3R	Full Channel Extruded, Folding Nose, 30"	300 lbs

Order "F" for use with front mount nose plates
Order "R" for use with recessed heel nose plates



P/N	Description
E32	Frame Wings, Senior, 2.5" Wide, Overall Width 17"
E32J	Frame Wings, Junior, 2" Wide, Overall Width 16"

P/N	Description
E23L	Solid Deck, 12", Senior, Snap On
E25L	Solid Deck, 12", Senior, Permanent
E50	Solid Deck, 18", Senior, Snap On
E49	Solid Deck, 18", Senior, Permanent
E25LP	Perforated Deck, 12", Senior, Permanent
E49P	Perforated Deck, 18", Senior, Permanent

P/N	Description
E22L	Solid Deck, 12", Junior, Snap On
E24L	Solid Deck, 12", Junior, Permanent
E50J	Solid Deck, 18", Junior, Snap On
E24LP	Perforated Deck, 12", Junior, Permanent



STANDARD CAPACITY HAND TRUCKS

S-500



S-502



S-503



P/N	Handle	Frame	Nose Plate	Wheels	Weight	Capacity
S-500	Loop Handle - A1	Straight Frame- B10	14" x 7-1/2", Front Mount w/Cutouts, Extruded Aluminum - C12	8" Pro-Flex Balloon Cushion - D16	17 lbs	500 lbs
S-502	Loop Handle - A1	Straight Frame - B10	14" x 7-1/2", Front Mount w/Cutouts, Extruded Aluminum - C12	10" Pro-Flex Balloon Cushion - D15	19 lbs	500 lbs
S-503	Double Ergo Grip w/U-brace Handle - A11	Straight Frame - B10	18" x 71/2", Front Mount w/Cutouts, Extruded Aluminum - C13	10" Pneumatic with Precision Sealed Bearings - D5	25 lbs	500 lbs

STANDARD CAPACITY CONVERTIBLE HAND TRUCKS

SENIOR



SSR



JUNIOR



SJR



P/N	Handle	Frame	Nose Plate	Wheels	Weight	Hand Truck Capacity	Platform Truck Capacity
SSR	Loop Handle	Senior Lightweight Convertible Frame w/Logo Channel	18" x 7-1/2", Front Mount, Extruded Aluminum - C17	10" Pneumatic with Precision Sealed Bearings - D5	46 lbs	500 lbs	1,000 lbs
SJR	Double Grip Handle	Junior Lightweight Convertible Frame	18" x 7-1/2", Front Mount, Extruded Aluminum - C17	10" Pneumatic with Precision Sealed Bearings - D5	42 lbs	500 lbs	1,000 lbs
SSR-2	Loop Handle	Senior Lightweight Convertible Frame w/Logo Channel	14" x 7-1/2" Recessed Heel w/ Cutouts, Cast - CA2	10" Pneumatic with Precision Sealed Bearings - D5	46 lbs	500 lbs	1,000 lbs
SJR-2	Double Grip Handle	Junior Lightweight Convertible Frame	18" x 7-1/2" Recessed Heel w/ Cutouts, Cast - CA2	10" Pneumatic with Precision Sealed Bearings - D5	42 lbs	500 lbs	1,000 lbs

LUGGAGE HANDLER HAND TRUCK

NARROW AISLE HAND TRUCK

P/N	Description
A1-B1-CA1-D12-E52-E3RC-CB-E16	Luggage Handler Hand Truck



- Carpeted back panel
- Loop handle with 52" extension
- Garment hanger hook
- Cast 14" x 7-1/2" nose plate
- 8" Wheels (D12)
- 30" Carpeted folding nose, 300 lbs capacity
- Contact factory for available options

P/N	Description
NA	Narrow Aisle Brackets

Build your custom part number and add -NA to the end to add narrow aisle brackets to your hand truck

- Specially designed brackets move each wheel in 1.5", making the truck 14" wide at the wheels
- Fits all Liberator hand trucks
- Fits all 8" and 10" wheels
- Optional extruded aluminum stair climbers

NA



P/N	Description
E44E	Extruded Aluminum Stair Climbers, for Narrow Aisle Hand Truck

THREE WAY HAND TRUCK

1.



2.



3.



P/N	Description
B60-CA2-D5	Three Way Liberator Hand Truck

- Securely locks in any of the three positions
- Cast 18" x 7-1/2" nose plate
- 10" Pneumatic wheels with precision bearings
- Integrated 27" folding nose for large loads stores out of the way
- Contact factory for available options

SPECIFICATIONS	
Height in 2 Wheel Position	52"
Height in 4 Wheel Position	42"
Deck Size	51" x 12"
Deck Height	11"
Capacity in 2 Wheel Position	600 lbs
Capacity in 4 Wheel Position	900 lbs
Weight	48 lbs

SPECIALTY HAND TRUCKS



SNACK FOOD DELIVERY HAND TRUCK

- Lightweight construction
- Extra long skids allow truck to easily slide out of the delivery vehicle
- 34" - 36" Folding nose for bulky packages
- Latch(s) keep handle(s) and folding nose in upright position
- 8" Proflex premium balloon cushion wheels (D16)

P/N	Description
HTA-16	Snack Food Delivery Hand Truck as shown w/8" wheels
HTA-15	Snack Food Delivery Hand Truck w/10" wheels (D5)
HTA-14	Folding Snack Hand Truck w/14" x 10 1/2", Rear Mount, Extruded Aluminum (C31) Nose Plate
HTA-10	Folding Snack Hand Truck w/14" x 7 1/2", Recessed Heel, Cast Aluminum (CA1 500 lbs. capacity) Nose Plate

SPECIFICATIONS

Overall Height	68" - 73"
Width	14"
Folding Nose Length	34" - 36"
Folding Snack HT Bed Length	66"
Folding Snack HT Handle Height	46"
Folding Snack HT Nose Height	46"
Weight	28 lbs - 35 lbs
Capacity (folding nose)	80 lbs
Capacity (2 wheel)	600 lbs
Capacity (4 wheel)	1200 lbs

HTA-16



HTA-14



HTA-14



TELESCOPING BIN DELIVERY HAND TRUCK

- Telescopes from 84" to 114"
- Seat post clamps keep the extension where you want it
- Skids allow truck to easily slide out from the delivery vehicle
- Extruded aluminum 16" x 12" nose plate (C8)
- No flat wheels (D6)
- Aluminum skids with steel wear strips

P/N	Description
HTA-13	Telescoping Bin Delivery Hand Truck



114"



P/N	Description
B89-C2FT-D5-E3RFT	Sr. Convertible Studio Cart w/30" Folding Nose
B77-C2FT-D5-E3RFT	Jr. Convertible Studio Cart w/30" Folding Nose

- Available with D5, D6, D6SS or D15 wheels (see page 8 for more information)
- Standard cart is a Sr. or Jr. convertible with swing arm, casters and 30" folding nose
- 18" x 7-1/2" extruded aluminum C2 nose plate
- Optional shelves, can mix and match
- Shelf capacity 200 lbs.
- Optional heavy duty 8" wheel kit instead of standard 5" casters



B77-C2FT-D6SS-E3RFT-E24T-E24B-EWK



B77-C2FT-D5-E3RFT-E24B

OPTIONS

P/N	Description
E24T	24" Carpeted Top Shelf
E24B	24" Carpeted Bottom Shelf
E18T	18" Carpeted Top Shelf
E18B	18" Carpeted Bottom Shelf
EWK*	8" Wheel Kit with Handle

* Not available with decks

P/N	Description
E22L	Jr. Snap on Deck
E24L	Jr. Permanent Deck
E23L	Sr. Snap on Deck
E25L	Sr. Permanent Deck

COMMERCIAL ICE CART **b.p**



- Heavy duty vinyl liner and built in tray prevent ice spills
- Three sided tilt back design keeps ice securely in place
- Uses 10" D6, no flat wheels
- Foot brake locks both rear wheels
- Front swivel casters provided maneuverability
- Can hold 20 bags of ice (22 lbs each)



P/N	Description
5012-002	Ice Cart w/Liner
5012-502	Liner

SPECIFICATIONS	HTA-8
Overall Height	64"
Overall Width	22"
Overall Depth	30"
Usable Width (Inside)	19"
Usable Depth (Inside)	19"
Weight	62 lbs

BULK DELIVERY CARTS



JR. BULK DELIVERY CART

16"

- Formed and welded construction with one stringer
- Reinforced heat treated handle
- Full length caster plates for added strength
- 3 Year warranty



P/N	Description
2025-174	Additional Handle
2025-302	Optional Carrier Plate



P/N	Description	Center Wheels	Casters	Width x Length	Weight	Capacity
FHE-16	Jr. Bulk Delivery Cart w/1 Round Handle	6" Polyurethane	5" Corner Casters	16" x 60"	64 lbs	1,200 lbs



UNIVERSAL BULK DELIVERY CART

18"

- Standard 8" x 2" urethane center casters with (4) 8" x 2" TPR casters
- Allows 2 carts to sit side by side on walkie riders or forklifts
- Square pocket design allows for interchangeability
- Stronger ergonomic handles



P/N	Description	Center Wheels	Casters	Width x Length	Weight	Capacity
FHM-1	Universal Bulk Delivery Cart	8" Polyurethane	8" Corner Casters	18" x 60"	95 lbs	1,200 lbs

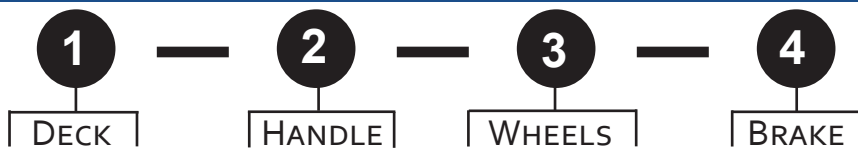


18"

- Heavy duty deck with double stringers
- Fully welded handle pockets
- Optional center brake system locks both center wheels for loading and unloading
- Brake can be actuated from all 4 sides
- Heavy duty heat treated handles

BUILD A CUSTOM BULK DELIVERY CART

Designing your custom bulk delivery cart is easy. Select one component from each section to create a cart specific for your needs. Build your custom part number as shown below. Example: FHE-1860-203-HD10 (This is the most popular model)



DECK **1**

P/N	Description	Width x Length
FHE-1854	Heavy Duty Bulk Delivery Cart	18" x 54"
FHE-1857	Heavy Duty Bulk Delivery Cart	18" x 57"
FHE-1860	Heavy Duty Bulk Delivery Cart	18" x 60"
FHE-1861	Heavy Duty Bulk Delivery Cart	18" x 61"

HANDLE **2**

P/N	Description
203	(2) 18" x 50" Round Handles
204	(2) 18" x 50" Round Handles w/Curtain Buttons
206	(2) 18" x 50" Square Handles
207	(2) 18" x 50" Square Handles w/Curtain Buttons
NH	No Handles

203
204



206
207



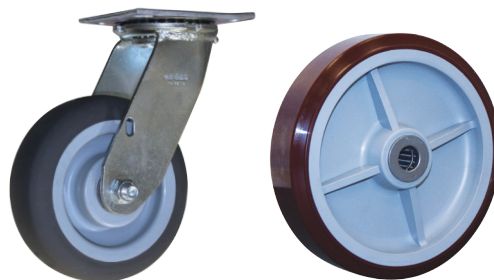
BULK DELIVERY CARTS

3 WHEELS

P/N	Center Wheels	Casters
HD1*	8" TPR, Round Tread, Poly Core	8" Round Tread Swivel Casters
HD2*	8" TPR, Round Tread, Poly Core	8" Pneumatic Swivel Casters
HD3	8" Mold on Rubber, Square Tread, Alum Core	6" Square Tread Swivel Casters
HD4	8" TPR, Square Tread, Poly Core Center	6" Square Tread Swivel Casters
HD5*	8" TPR, Square Tread, Poly Core Center	8" Pneumatic Swivel Casters
HD6*	8" Mold on Rubber, Square Tread, Alum Core	8" Pneumatic Swivel Casters
HD7	6" TPR, Square Tread, Poly Core	6" Square Tread Swivel Casters
HD8	8" TPR, Square Tread, Poly Core	6" Square Tread Swivel Casters
HD9	8" TPR, Round Tread, Poly Core	6" Square Tread Swivel Casters
HD10**	8" Urethane Square Tread	6" Square Tread Swivel Casters

* Not Available w/Brakes

** Standard Wheel Configuration

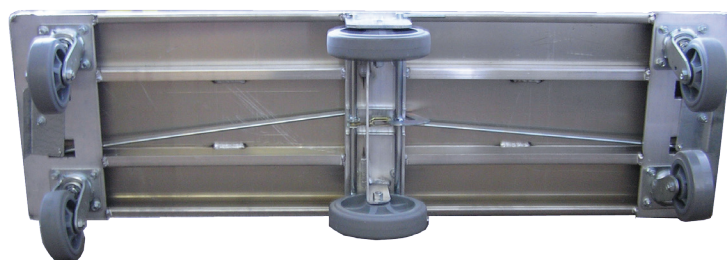


HD10

4 BRAKE

P/N	Description
CB	Center Brake System

- Foot actuated brake located on each end locks center wheels



b+p ACCESSORIES

P/N	Center Wheels
2025-302	Carrier Plate
2025-163	18" Shelf - 200 lbs Capacity (or add -SH to the end of your part number) - Requires 60" Cart
2025-503	Containment Curtain- Requires Handle Buttons



FHE-1860-204-HD10-SH-CB



2025-302

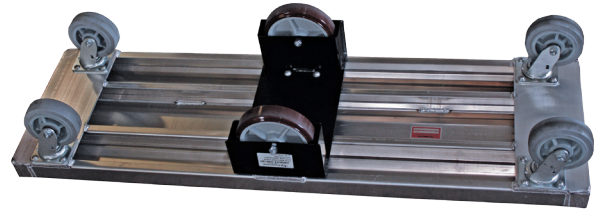


2025-503

WALKIE RIDER BULK DELIVERY CART

18"

- Steel under structure
- Standard 8" x 2" urethane center wheels with (4) 6" x 2" TPR square tread swivel casters
- Allows 2 carts to sit side by side on walkie riders or forklifts
- Requires only 7" between forks
- 1,200 lbs capacity



P/N	Description	Width x Length
FHE-6	Walkie Rider Bulk Delivery Cart w/ Two Handles	18" x 60"

Not available with center brake

WAREHOUSE BULK DELIVERY CART

24"



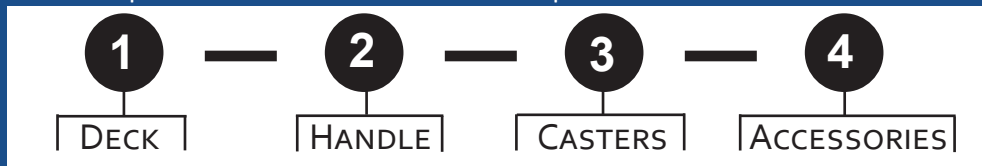
- Two square handles with two crossbars and one vertical strap
- Standard 8" x 2" urethane center wheels with (4) 6" x 2" TPR square tread swivel casters
- Optional removable shelf - 200 lbs capacity
- Optional center brake
- 1,200 lbs capacity

P/N	Description	Width x Length
FHE-2460-217-HD10	Warehouse Cart	24" x 60"
FHE-2460-217-HD10-SH	Warehouse Cart w/Shelf	24" x 60"
FHE-2460-217-HD10-CB	Warehouse Cart w/Center Brake	24" x 60"
FHE-2460-217-HD10-SH-CB	Warehouse Cart w/Shelf and Center Brake	24" x 60"

ALUMINUM PLATFORM TRUCKS

BUILD A CUSTOM PLATFORM TRUCK

Designing your custom platform truck is easy. Select one component from each section to create a truck specific for your needs. Build your custom part number as shown below. Example: PT-3060S-150-850-080



1 DECK

FORMED

- Formed deck design is strong and lightweight
- Extremely durable
- Design eliminates warping and waving
- Tread plate or smooth plate decks available
- Deck capacity 2,000 lbs (unless limited by caster capacity)
- Competitively priced against wood deck design



PTF-2448T-150-850

PTF-2436S-150-850

Formed Deck Platform Truck

Tread Plate Deck P/N	Smooth Plate Deck P/N	Deck Width x Length
PTF-2436T	PTF-2436S	24" x 36"
PTF-2448T	PTF-2448S	24" x 48"
PTF-3048T	PTF-3048S	30" x 48"
PTF-3060T	PTF-3060S	30" x 60"
PTF-3072T	PTF-3072S	30" x 72"
PTF-3648T	PTF-3648S	36" x 48"

WELDED

- Heavy duty welded design uses exclusive side rails that improve resistance to twisting and deck curling
- Extremely durable
- Tread plate or smooth plate decks available
- Optional carpeted deck and full perimeter rubber bumper
- Deck capacity 2,000 lbs (unless limited by caster capacity)



PT-2448T-150-850

PT-2448S-150-850

Welded Deck Platform Truck

Tread Plate Deck P/N	Smooth Plate Deck P/N	Deck Width x Length
PT-2436T	PT-2436S	24" x 36"
PT-2448T	PT-2448S	24" x 48"
PT-2460T	PT-2460S	24" x 60"
PT-3048T	PT-3048S	30" x 48"
PT-3060T	PT-3060S	30" x 60"
PT-3072T	PT-3072S	30" x 72"
PT-3648T	PT-3648S	36" x 48"
PT-3660T	PT-3660S	36" x 60"
PT-3672T	PT-3672S	36" x 72"

HANDLE 2



150



155



160



165

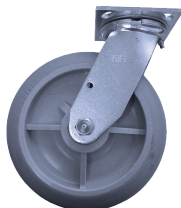
P/N	Description
150	Handle, no Strap
155	Handle, 1 Strap
160	Handle, 2 Straps
165	Handle, w/18" Panel

- 1-1/2" diameter round tubing
- Fits on either end of the deck
- Choose 1 or 2 handles, can mix styles

CASTERS 3



650



850



820

P/N	Description	Size	Capacity
650	Caster, Poly Core, Round TPR Tread	6" x 2"	1,500 lbs
850	Caster, Poly Core, Round TPR Tread	8" x 2"	2,000 lbs
820	Caster, Rubber on Iron Core	8" x 2"	2,000 lbs
NC	No Casters		2,000 lbs

- Each truck comes with 2 rigid casters and 2 swivel casters

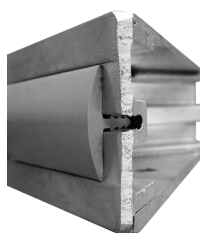
ACCESSORIES 4



060



080



Welded Deck Corner with Bumper

P/N	Description
310	Rubber Bumper, Gray (Welded Platform Only)*
C	Carpeted Deck (Welded Platform Only)**
060	Floor Lock for 6" Casters
080	Floor Lock for 8" Casters

*Welded deck is required for full perimeter rubber bumper

**Full perimeter rubber bumper is required with carpeted deck



PT-3060S-150-850-C-310



PT-3060S-165-165-850-C-310

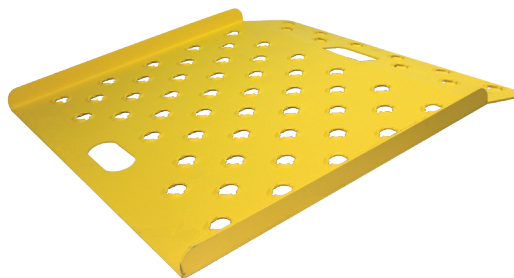
ALUMINUM HAND TRUCK CURB RAMPS

Punched

- Our exclusive process punches holes in the material, then raises the edges of the cutouts for superior traction
- Exceptionally lightweight
- Won't collect ice, mud, snow, or debris
- Hand slot doubles as a stop
- Available in safety yellow powder coat - Increases visibility and traction (-SY)



P/N	Width x Length	Capacity	Weight
CRP2224	22" x 24"	500 lbs	6 lbs
CRP2618	26" x 18"	750 lbs	8 lbs
CRP2727	27" x 27"	750 lbs	13 lbs
CRP2736	27" x 36"	750 lbs	17.5 lbs
CRP3030	30" x 30"	750 lbs	15 lbs
CRP2745	27" x 45"	500 lbs	22 lbs



P/N	Width x Length	Capacity	Weight
CRP2618-SY	26" x 18"	750 lbs	8 lbs
CRP2727-SY	27" x 27"	750 lbs	13 lbs
CRP2736-SY	27" x 36"	750 lbs	17.5 lbs
CRP3030-SY	30" x 30"	750 lbs	15 lbs
CRP2745-SY	27" x 45"	500 lbs	22 lbs

Tread Plate

- Diamond Tread Plate
- Riveted on Handle (underside) doubles as a stop (LCRU and CRU models)
- CR models have welded legs
- Available in safety yellow powder coat - Increases visibility and traction (Add -SY to the part number)



P/N	Width x Length	Thickness	Stop	Capacity	Weight
LCRU2618	26" x 18"	1/8"	Riveted Handle	500 lbs	6 lbs
CRU2618	26" x 18"	3/16"	Riveted Handle	750 lbs	9 lbs
CR2618	26" x 18"	3/16"	Welded Legs	750 lbs	10 lbs
LCRU2727	27" x 27"	1/8"	Riveted Handle	500 lbs	11 lbs
CRU2727	27" x 27"	3/16"	Riveted Handle	750 lbs	16 lbs
CR2727	27" x 27"	3/16"	Welded Legs	750 lbs	17 lbs
CRU3030	30" x 30"	3/16"	Riveted Handle	750 lbs	19 lbs
CR3030	30" x 30"	3/16"	Welded Legs	750 lbs	20 lbs

Punched Wedge

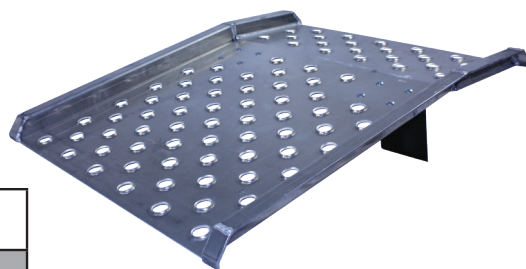


- Wedge design curb ramp features the same punched design for traction
- Sides folded down keep the ramp in place and provides more usable width
- Available in safety yellow powder coat - Increases visibility and traction (Add -SY to the part number)

P/N	Width x Length	Thickness	Capacity	Weight
CRW2224	22" x 24"	1/8"	600 lbs	6 lbs
CRW2724	27" x 24"	3/16"	750 lbs	12 lbs

ALUMINUM HAND TRUCK BOARDS

- A lightweight solution for dock-to-truck/truck-to-truck applications
- Features our exclusive punched design providing excellent traction while preventing buildup of mud, slush, ice or debris
- Curbs provide an increased margin of safety
- Steel bolt-on legs

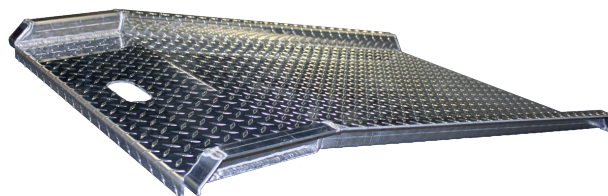


Apron Hand Truck
Dock Board

P/N	Width x Length	Capacity	Leg Length	Max. Height Difference	Weight
AHTD-3036	30" x 36"	800 lbs	7"	5"	27 lbs
AHTD-3048	30" x 48"	800 lbs	9"	7"	35 lbs

P/N	Width x Length	Thickness	Capacity	Weight
HTDB-2860	28" x 60"	3/16"	700 lbs	35 lbs
HTDB-2868	28" x 68"	1/4"	750 lbs	52 lbs
HTDB-3048	30" x 48"	3/16"	800 lbs	30 lbs
HTDB-3068	30" x 68"	1/4"	750 lbs	55 lbs
HTDB-3260	32" x 60"	3/16"	700 lbs	40 lbs

- Special dairy truck design with 1" lip on front made to fit down into drain opening in doorway on back of truck to firmly hold it in place
- High traction tread plate surface
- Integrated hand slot for easy and safe maneuvering



Dairy Hand Truck
Dock Board

- Lightweight, one piece design is resistant to bending and fatigue
- Ideal for spanning between truck and loading dock
- Punched design won't collect ice, mud, snow or debris
- Bolt on hooks secure to truck bed

P/N	Width x Length	Capacity	Weight
LWB-2448	24" x 48"	750 lbs	39 lbs

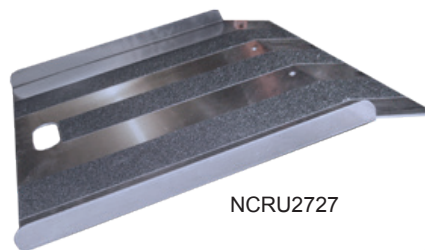


Walk Board

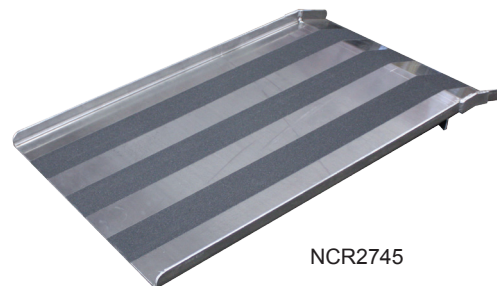
SMOOTH NON-SKID CURB RAMP

- Curb ramp for use with Bulk Delivery Carts
- Smooth plate with non-skid tape
- Punched handle (except NCR2745)

P/N	Width x Length	Thickness	Stop	Capacity	Weight
NCRU2727	27" x 27"	3/16"	Riveted Handle	750 lbs	15 lbs
NCR2727	27" x 27"	3/16"	Welded Legs	750 lbs	15 lbs
NCR2736	27" x 36"	3/16"	Welded Legs	750 lbs	20 lbs
NCR2745	27" x 45"	1/4"	Welded Legs	1,400 lbs	34 lbs
NCR3030	30" x 30"	3/16"	Welded Legs	750 lbs	19 lbs
NCR3436	34" x 36"	1/4"	Welded Legs	1,400 lbs	33 lbs



NCRU2727

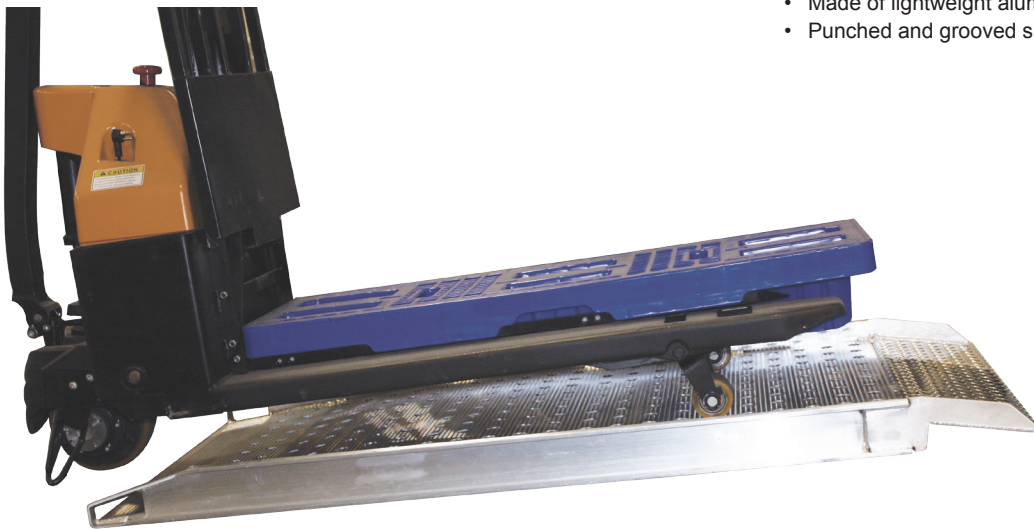


NCR2745

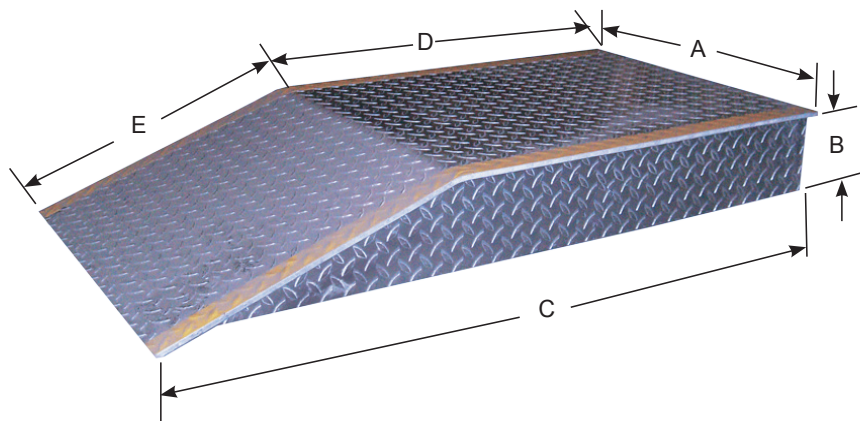
PALLET JACK CURB RAMPS

Part Number	Length	Width	Weight	Capacity
PRP-3606-SP1	6 ft	3 ft	56 lbs	2,000 lbs

- Improves delivery, allowing pallet jacks to travel up over curbs
- Double apron ends to smooth the transition onto the ramp
- Fits most pallet jacks
- Minimum height 4"
- Maximum height 12"
- Made of lightweight aluminum
- Punched and grooved surface improves traction



ALUMINUM WHEEL RAMP



To Select Your Ramp:

Ramp selection is based on the following items:

A. Width - Base on the maximum wheel width of your largest vehicle. For double wheel vehicles, choose the 24" width and use the ramp at the inside wheel location.

B. Height - Determined by the following formula:

Dock Height + 2" = _____

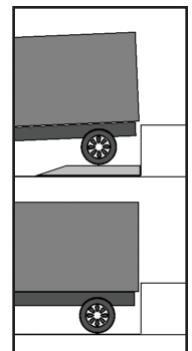
minus (-) Truck Bed Height = _____ ramp height

Choose the next highest standard height in chart.

Height	Length			18" Wide		24" Wide	
	Overall	Level	Incline	P/N	Weight	P/N	Weight
6"	48"	30"	18"	PR-18-6-48	64 lbs	PR-24-6-48	79 lbs
	60"	42"	18"	PR-18-6-60	77 lbs	PR-24-6-60	94 lbs
	102"	84"	18"	PR-18-6-102	126 lbs	PR-24-6-102	145 lbs
8"	54"	30"	24"	PR-18-8-54	78 lbs	PR-24-8-54	94 lbs
	60"	36"	24"	PR-18-8-60	85 lbs	PR-24-8-60	103 lbs
	108"	84"	24"	PR-18-8-108	147 lbs	PR-24-8-108	169 lbs
10"	60"	30"	30"	PR-18-10-60	95 lbs	PR-24-10-60	115 lbs
	66"	36"	30"	PR-18-10-66	102 lbs	PR-24-10-66	124 lbs
	72"	42"	30"	PR-18-10-72	111 lbs	PR-24-10-72	133 lbs
	114"	84"	30"	PR-18-10-114	166 lbs	PR-24-10-114	188 lbs
12"	72"	36"	36"	PR-18-12-72	125 lbs	PR-24-12-72	143 lbs
	78"	42"	36"	PR-18-12-78	137 lbs	PR-24-12-78	153 lbs
	120"	84"	36"	PR-18-12-120	188 lbs	PR-24-12-120	213 lbs

Capacity for all models is

12,000 lbs per ramp



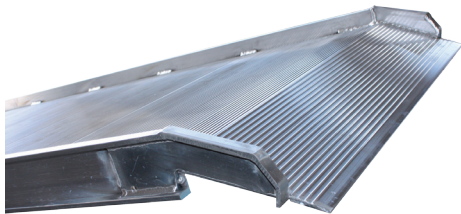


- Made of lightweight aluminum
- Steel ends with built in handles
- Three end types available to lock into most truck beds
- Punched and grooved surface improves traction and will not collect mud, snow or debris
- Will fit in most under truck carriers
- 26" wide deck surface with side rails

<i>Length</i>	<i>Apron End with Two Hooks Part Number</i>	<i>Apron End with Two Pins Part Number</i>	<i>Apron End with Single Pin Part Number</i>	<i>Capacity</i>	<i>Weight</i>
12 ft (11'2" Usable)	FSW-2612-AH	FSW-2612-AP	FSW-2612-ACP	1,000 lbs	103 lbs
14 ft (13'2" Usable)	FSW-2614-AH	FSW-2614-AP	FSW-2614-ACP	1,000 lbs	110 lbs
16 ft (15'2" Usable)	FSW-2616-AH	FSW-2616-AP	FSW-2616-ACP	900 lbs	117 lbs

TWIN TOOTH TRACTION

- Transports easily in your delivery vehicle
- Ideal for city deliveries where space is limited
- Widths and lengths to suit any application
- Built in handles



Type A - Apron End

The level-off apron overlaps the truck bed
Safety chain (18") standard



Type F - Flush Hook End

Steel hooks lock onto the truck bed providing flush-type direct entry

Type	Height Range		Length	Capacity	26" Width		28" Width		38" Width	
	Min	Max			P/N	Weight	P/N	Weight	P/N	Weight
A Apron End	6"	21"	6'	2,000 lbs	-	-	PR-2806-A	48 lbs	PR-3806-A	61 lbs
	6"	25"	7'	1,800 lbs	-	-	PR-2807-A	56 lbs	PR-3807-A	70 lbs
	6"	29"	8'	1,700 lbs	-	-	PR-2808-A	63 lbs	PR-3808-A	79 lbs
	6"	33"	9'	1,650 lbs	-	-	PR-2809-A	70 lbs	PR-3809-A	88 lbs
	6"	38"	10'	1,500 lbs	-	-	PR-2810-A	77 lbs	PR-3810-A	97 lbs
	6"	46"	12'	1,400 lbs	-	-	PR-2812-A	92 lbs	PR-3812-A	115 lbs
	6"	54"	14'	1,200 lbs	-	-	PR-2814-A	107 lbs	PR-3814-A	133 lbs
F Hook End	6"	62"	16'	1,000 lbs	-	-	PR-2816-A	121 lbs	PR-3816-A	151 lbs
	6"	23"	6'	2,000 lbs	PR-2606-F	47 lbs	PR-2806-F	49 lbs	PR-3806-F	62 lbs
	6"	27"	7'	1,800 lbs	PR-2607-F	54 lbs	PR-2807-F	57 lbs	PR-3807-F	71 lbs
	6"	31"	8'	1,700 lbs	PR-2608-F	61 lbs	PR-2808-F	64 lbs	PR-3808-F	80 lbs
	6"	35"	9'	1,650 lbs	PR-2609-F	68 lbs	PR-2809-F	71 lbs	PR-3809-F	89 lbs
	6"	40"	10'	1,500 lbs	PR-2610-F	75 lbs	PR-2810-F	79 lbs	PR-3810-F	98 lbs
	6"	48"	12'	1,400 lbs	PR-2612-F	89 lbs	PR-2812-F	93 lbs	PR-3812-F	116 lbs
	6"	56"	14'	1,200 lbs	PR-2614-F	103 lbs	PR-2814-F	108 lbs	PR-3814-F	134 lbs
	6"	64"	16'	1,000 lbs	PR-2616-F	117 lbs	PR-2816-F	122 lbs	PR-3816-F	152 lbs

PUNCHED TRACTION

- Holes are punched in the material, providing superior traction
- Won't collect ice, mud, snow, or debris
- Punched design reduces the weight without sacrificing strength
- Custom widths available
- Apron end or steel hooks to lock onto truck bed for flush-type direct entry
- Built in handles



PRP-2807-F



Type A - Apron End

The level-off apron overlaps the truck bed
Safety chain (18") standard



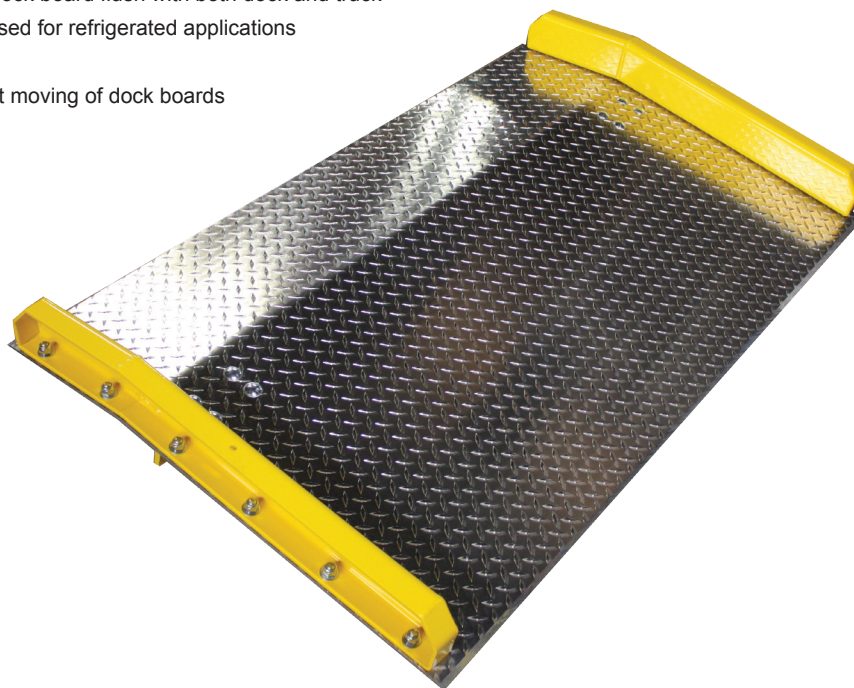
Type F - Flush Hook End

Steel hooks lock onto the truck bed providing flush-type direct entry

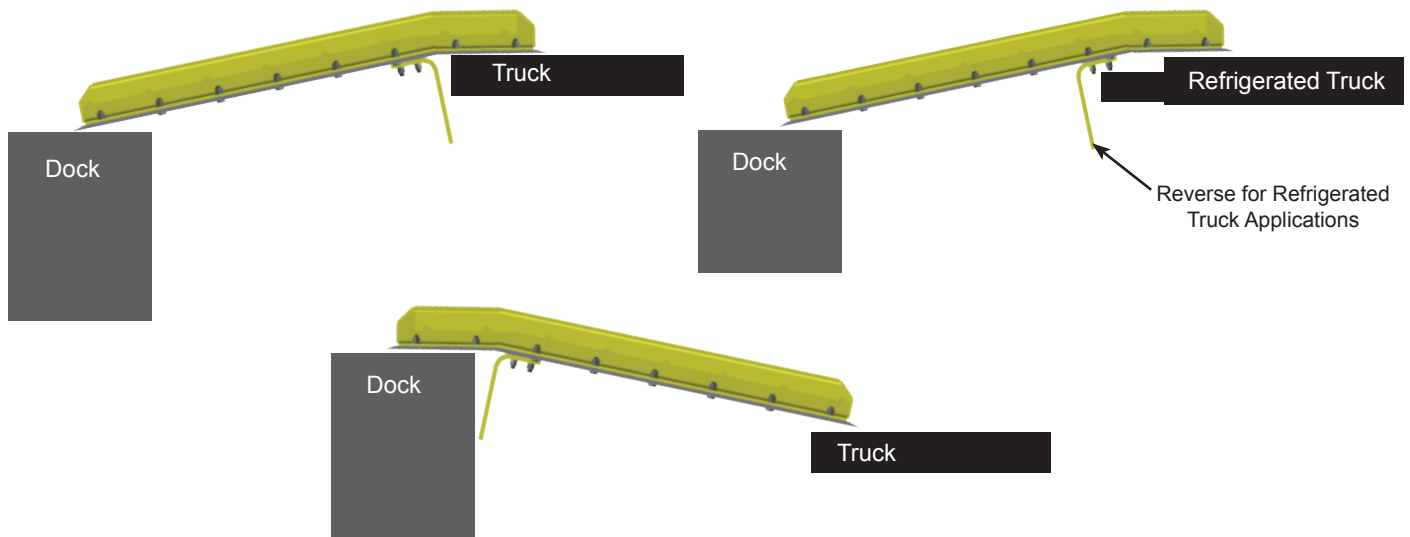
Type	Height Range		Length	Capacity	26" Width		28" Width		38" Width	
	Min	Max			P/N	Weight	P/N	Weight	P/N	Weight
A Apron End	6"	21"	6'	2,000 lbs	PRP-2606-A	43 lbs	PRP-2806-A	44 lbs	PRP-3806-A	57 lbs
	6"	25"	7'	1,800 lbs	PRP-2607-A	50 lbs	PRP-2807-A	52 lbs	PRP-3807-A	66 lbs
	6"	29"	8'	1,700 lbs	PRP-2608-A	56 lbs	PRP-2808-A	59 lbs	PRP-3808-A	74 lbs
	6"	33"	9'	1,650 lbs	PRP-2609-A	63 lbs	PRP-2809-A	66 lbs	PRP-3809-A	82 lbs
	6"	38"	10'	1,500 lbs	PRP-2610-A	69 lbs	PRP-2810-A	73 lbs	PRP-3810-A	91 lbs
	6"	46"	12'	1,400 lbs	PRP-2612-A	83 lbs	PRP-2812-A	87 lbs	PRP-3812-A	107 lbs
	6"	54"	14'	1,200 lbs	PRP-2614-A	96 lbs	PRP-2814-A	100 lbs	PRP-3814-A	124 lbs
	6"	62"	16'	1,000 lbs	PRP-2616-A	110 lbs	PRP-2816-A	114 lbs	PRP-3816-A	141 lbs
F Hook End	6"	23"	6'	2,000 lbs	PRP-2606-F	44 lbs	PRP-2806-F	45 lbs	PRP-3806-F	58 lbs
	6"	27"	7'	1,800 lbs	PRP-2607-F	51 lbs	PRP-2807-F	53 lbs	PRP-3807-F	67 lbs
	6"	31"	8'	1,700 lbs	PRP-2608-F	57 lbs	PRP-2808-F	60 lbs	PRP-3808-F	75 lbs
	6"	35"	9'	1,650 lbs	PRP-2609-F	64 lbs	PRP-2809-F	67 lbs	PRP-3809-F	83 lbs
	6"	40"	10'	1,500 lbs	PRP-2610-F	70 lbs	PRP-2810-F	74 lbs	PRP-3810-F	92 lbs
	6"	48"	12'	1,400 lbs	PRP-2612-F	84 lbs	PRP-2812-F	88 lbs	PRP-3812-F	108 lbs
	6"	56"	14'	1,200 lbs	PRP-2614-F	97 lbs	PRP-2814-F	101 lbs	PRP-3814-F	125 lbs
	6"	64"	16'	1,000 lbs	PRP-2616-F	111 lbs	PRP-2816-F	115 lbs	PRP-3816-F	142 lbs

STEEL CURB DOCK BOARDS

- Lightweight aluminum deck with safety tread plate surface
- Beveled edges provide smooth entry and exit
- Engineered bend keeps the edges of the dock board flush with both dock and truck
- Heavy duty steel bolt-on legs can be reversed for refrigerated applications
- Heavy duty bolt on steel curbs
- Optional heavy duty lifting chains for forklift moving of dock boards



SPECIFICATIONS			10,000 lbs Capacity 3/8" Aluminum, 4" High Steel Curbs			15,000 lbs Capacity 1/2" Aluminum, 4" High Steel Curbs		
Width x Length	Max Height Difference	Leg Length	Capacity	P/N	Weight	Capacity	P/N	Weight
48" x 36"	5"	7"	10,000 lbs	ADS10-4836	115 lbs	15,000 lbs	ADS15-4836	136 lbs
48" x 48"	7"	9"	10,000 lbs	ADS10-4848	151 lbs	15,000 lbs	ADS15-4848	180 lbs
48" x 60"	10"	12"	10,000 lbs	ADS10-4860	189 lbs	15,000 lbs	ADS15-4860	225 lbs
60" x 36"	5"	7"	10,000 lbs	ADS10-6036	126 lbs	15,000 lbs	ADS15-6036	153 lbs
60" x 48"	7"	9"	10,000 lbs	ADS10-6048	169 lbs	15,000 lbs	ADS15-6048	204 lbs
60" x 60"	10"	12"	10,000 lbs	ADS10-6060	211 lbs	15,000 lbs	ADS15-6060	255 lbs
60" x 72"	12"	18"	10,000 lbs	ADS10-6072	261 lbs	15,000 lbs	ADS15-6072	314 lbs
72" x 36"	5"	7"	10,000 lbs	ADS10-7236	174 lbs	15,000 lbs	ADS15-7236	193 lbs
72" x 48"	7"	9"	10,000 lbs	ADS10-7248	190 lbs	15,000 lbs	ADS15-7248	255 lbs
72" x 60"	10"	12"	10,000 lbs	ADS10-7260	237 lbs	15,000 lbs	ADS15-7260	322 lbs
78" x 36"	5"	7"	N/A			15,000 lbs	ADS15-7836	178 lbs
78" x 48"	7"	9"				15,000 lbs	ADS15-7848	238 lbs
78" x 60"	10"	12"				15,000 lbs	ADS15-7860	297 lbs
78" x 72"	12"	18"				15,000 lbs	ADS15-7872	357 lbs



How to choose a Dock Board:

Step 1: Determine Capacity - Add the weight of the forklift and the weight of the maximum load to be carried.

Step 2: Determine Width - The width of the dock board should be at least 18 inches wider than your widest equipment passing over the board. Remember, safety curbs take up 6 inches of usable width.

Example: A 60 inch dock board has 54 inches of usable space.

Step 3: Determine Length - You need to know the maximum difference between the height of the dock and the height of the highest truck bed.

1. MAX. TRUCK HEIGHT		
2. MINUS DOCK HEIGHT	-	
3. EQUALS HEIGHT DIFFERENCE	=	

Using the chart below, determine the length of the board you need. An 11° bend is standard.

Example: If the maximum height difference is 7 inches, a board at least 48 inches long is required.

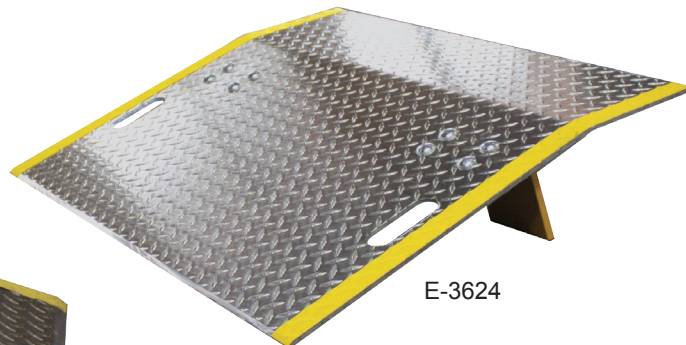
Length Calculation Table																		
Maximum Height Difference	1"	2"	3"	4"	5"	5.5"	6"	7"	8"	8.5"	9"	10"	11"	12"	13"	14"	15"	16"
Minimum Length Required for Standard 11° Slope				30"	36"		42"	48"		54"		60"	66"	72"	78"	84"	90"	96"

ALUMINUM DOCK PLATES

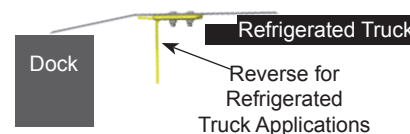
- High traction, safety tread plate surface gives positive traction for equipment and safe footing for personnel.
- Bolt-on legs/handles allow for quick field repair and ease of moving/lifting - Easily reversed for refrigerated trucks.
- Beveled edges provide smooth entry and exit.
- Engineered bend keeps the edges of the dock plate flush with both dock and truck.
- Safety yellow edges for low light visibility
- Standard with 2 hand slots, bolt on handles are available upon request at an extra charge (add -H to the part number)
- Two year warranty



E-3048-H



E-3624



How to choose a Dock Plate:

Non-Motorized Use Only

Step 1: Determine Width - add 12" to the widest load that will go over the plate

Step 2: Determine Capacity - weight of pallet jack + maximum weight of items carried + operator weight
If the maximum load is within 50 lbs of the stated capacity, select the next highest capacity

Step 3: Determine Length - required length is determined by height difference between dock and truck floor, use the table below

Length Calculation Table																		
Maximum Height Difference	1"	2"	3"	4"	5"	5.5"	6"	7"	8"	8.5"	9"	10"	11"	12"	13"	14"	15"	16"
Minimum Length Required for Standard 11° Slope				30"	36"		42"	48"		54"		60"	66"	72"	78"	84"	90"	96"

A Note About Capacities:

All B&P dock plates are rated at actual capacities, per Aluminum Industry Association standards.

Some other companies rate capacities with a formula that considers the fact that only two wheels of the four wheel vehicle will be on the plate at one time. This can artificially overstate the capacities of the plates, creating a potentially dangerous situation. We state our capacities as actual, giving you an extra margin of safety.

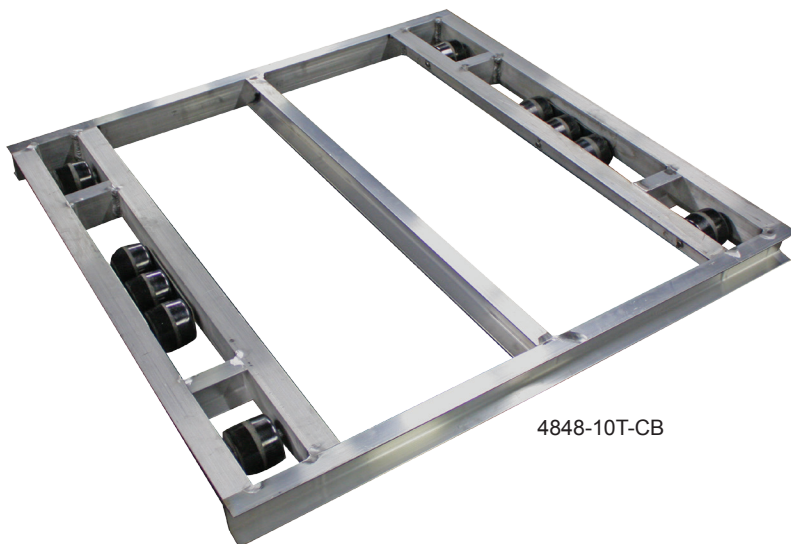
SPECIFICATIONS			E SERIES 3/8" Plate			EH SERIES 1/2" Plate		
Width x Length	Max Height Difference	Leg Length	Capacity	P/N	Weight	Capacity	P/N	Weight
30" x 24"	3"	7"	3,000 lbs	E-3024	46 lbs	5,200 lbs	EH-3024	55 lbs
30" x 30"	4"	7"	2,300 lbs	E-3030	53 lbs	4,100 lbs	EH-3030	64 lbs
30" x 36"	5"	7"	1,800 lbs	E-3036	60 lbs	3,500 lbs	EH-3036	72 lbs
30" x 48"	7"	9"	1,400 lbs	E-3048	76 lbs	2,600 lbs	EH-3048	94 lbs
36" x 24"	3"	7"	3,600 lbs	E-3624	51 lbs	6,200 lbs	EH-3624	62 lbs
36" x 30"	4"	7"	3,000 lbs	E-3630	58 lbs	5,100 lbs	EH-3630	72 lbs
36" x 36"	5"	7"	2,500 lbs	E-3636	68 lbs	4,300 lbs	EH-3636	82 lbs
36" x 48"	7"	9"	1,900 lbs	E-3648	87 lbs	3,000 lbs	EH-3648	108 lbs
42" x 24"	3"	7"	4,300 lbs	E-4224	57 lbs	7,200 lbs	EH-4224	68 lbs
42" x 30"	4"	7"	3,300 lbs	E-4230	64 lbs	5,900 lbs	EH-4230	81 lbs
42" x 48"	7"	9"	2,100 lbs	E-4248	96 lbs	3,500 lbs	EH-4248	123 lbs
48" x 24"	3"	7"	5,200 lbs	E-4824	62 lbs	8,200 lbs	EH-4824	75 lbs
48" x 30"	4"	7"	4,100 lbs	E-4830	72 lbs	6,300 lbs	EH-4830	90 lbs
48" x 36"	5"	7"	3,500 lbs	E-4836	83 lbs	5,300 lbs	EH-4836	104 lbs
48" x 42"	6"	9"	3,000 lbs	E-4842	96 lbs	4,300 lbs	EH-4842	122 lbs
48" x 48"	7"	9"	2,600 lbs	E-4848	107 lbs	3,800 lbs	EH-4848	137 lbs
48" x 60"	10"	12"	1,800 lbs	E-4860	132 lbs	2,900 lbs	EH-4860	168 lbs
60" x 24"	3"	7"	5,700 lbs	E-6024	71 lbs	10,000 lbs	EH-6024	90 lbs
60" x 30"	4"	7"	4,600 lbs	E-6030	85 lbs	7,800 lbs	EH-6030	108 lbs
60" x 36"	5"	7"	4,100 lbs	E-6036	98 lbs	6,600 lbs	EH-6036	125 lbs
60" x 42"	6"	9"	3,500 lbs	E-6042	115 lbs	5,500 lbs	EH-6042	148 lbs
60" x 48"	7"	9"	2,900 lbs	E-6048	129 lbs	4,800 lbs	EH-6048	164 lbs
60" x 60"	10"	12"	2,000 lbs	E-6060	160 lbs	3,700 lbs	EH-6060	203 lbs
72" x 30"	4"	7"	5,400 lbs	E-7230	98 lbs	9,500 lbs	EH-7230	125 lbs
72" x 36"	5"	7"	4,300 lbs	E-7236	118 lbs	7,800 lbs	EH-7236	145 lbs
72" x 48"	7"	9"	3,400 lbs	E-7248	151 lbs	5,900 lbs	EH-7248	191 lbs

*Popular sizes in red bold print

To substitute handles instead of hand slots on your dock plate add "-H" to your part number (there will be an increased cost)

ALUMINUM PALLET DOLLIES

- Lightweight
- Strong extruded aluminum frame and steel axles
- Maneuverable, tilt construction with 360° turning
- Non-tilt also available
- 3-1/2" rollers with sealed bearings



4848-10T-CB

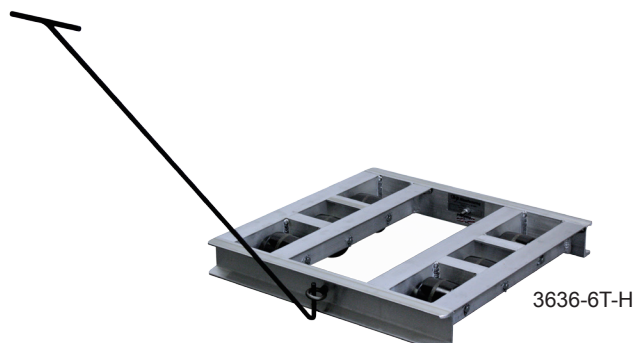
Size Width x Length Length is Travel Direction	4,000 Lbs Capacity 6 Roller		6,000 Lbs Capacity 8 Roller		8,000 Lbs Capacity 10 Roller	
	P/N	Weight	P/N	Weight	P/N	Weight
36" x 36"	3636-6T	32 lbs	3636-8T	37 lbs	3636-10T	40 lbs
36" x 42"	3642-6T	34 lbs	3642-8T	40 lbs	3642-10T	43 lbs
36" x 48"	3648-6T	36 lbs	3648-8T	41 lbs	3648-10T	44 lbs
40" x 48"	4048-6T	36 lbs	4048-8T	42 lbs	4048-10T	45 lbs
42" x 42"	4242-6T	37 lbs	4242-8T	43 lbs	4242-10T	46 lbs
42" x 48"	4248-6T	37 lbs	4248-8T	43 lbs	4248-10T	46 lbs
48" x 48"	4848-6T	38 lbs	4848-8T	44 lbs	4848-10T	47 lbs
24" x 24"	2424-6T	34 lbs				

If a non-tilt type of pallet dolly is desired, delete the "T" in the part number and replace it with a "NT" when ordering, there is no extra charge for non-tilt type pallet dollies

ACCESSORIES

P/N	Description
H	Two Handle Loops and Handle
CB	Center Support Crossbar

Add a "H" or "CB" to the end of your part number to add an accessory



Tilt Type Dollies Roller Configuration



4,000 lbs capacity - 6 Roller



6,000 lbs capacity - 8 Roller



8,000 lbs capacity - 10 roller



We manufacture the highest quality delivery products, guaranteed! We're so confident, we offer a no obligation demo program. Order our products and try them risk free, for 30 days. If you don't agree that they are simply the best products available, we will take them back!

Contact your local distributor to arrange a demo today.



**B&P Manufacturing
prides itself in creating
custom material handling
solutions specific to our
customers needs.**

**Have a material handling
problem?**

We can help.



**(800)-334-7141
(231)-775-2229
(231)-775-0013 (fax)**



www.bpmfg.com



bpsales@bpmfg.com



**8051 E. Boon Road
Cadillac, MI 49601
U.S.A.**

