

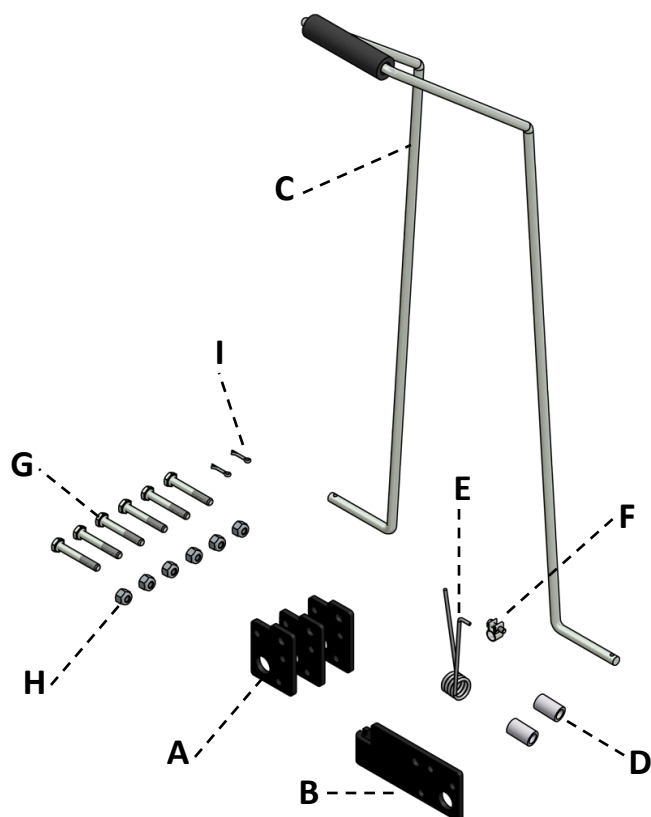
Pull Bar Assembly Instructions

For E1L Stair Climbers

Item	Description	Qty.	Part No.
A	Kick Bar Bracket	3	2001-816
B	Spring Bracket	1	2002-281
C	Pull Bar w/ Grip	1	2002-279
D	Spacer	2	2001-821
E	Spring	1	8018-006
F	Clamp	1	8264-003
G	Bolt, Hex Head 1/4"-20 x 1-3/4"	6	8007-036
H	Lock Nut, 1/4"-20	6	8001-004
I	Cotter Pin	2	8008-003

Tools Required:

- (1) Flat head screwdriver
- (2) 7/16" wrench/socket
- (1) Needle nose pliers



*Handle, frame, nose plate, and wheels will vary based on the options selected at the time of purchase.

www.bpmfg.com

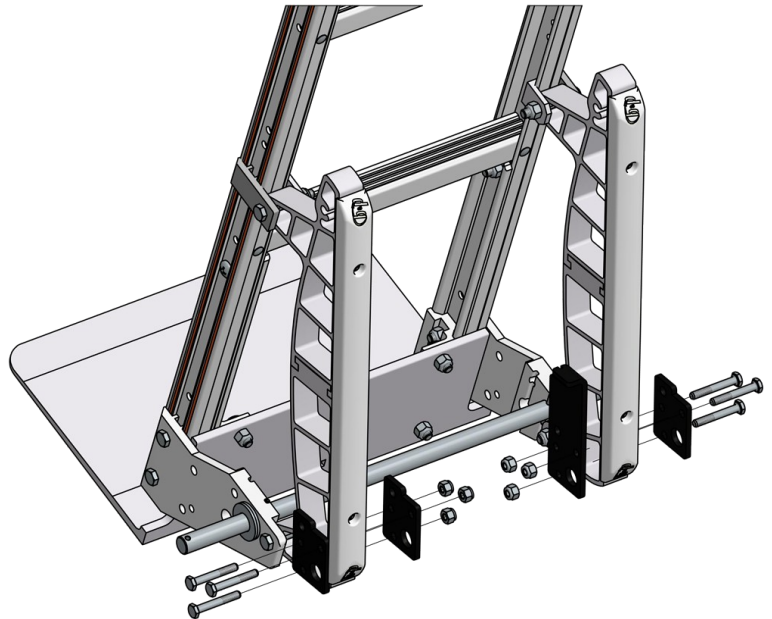
8051 East Boon Road | Cadillac, MI 49601

(800) 334-7141

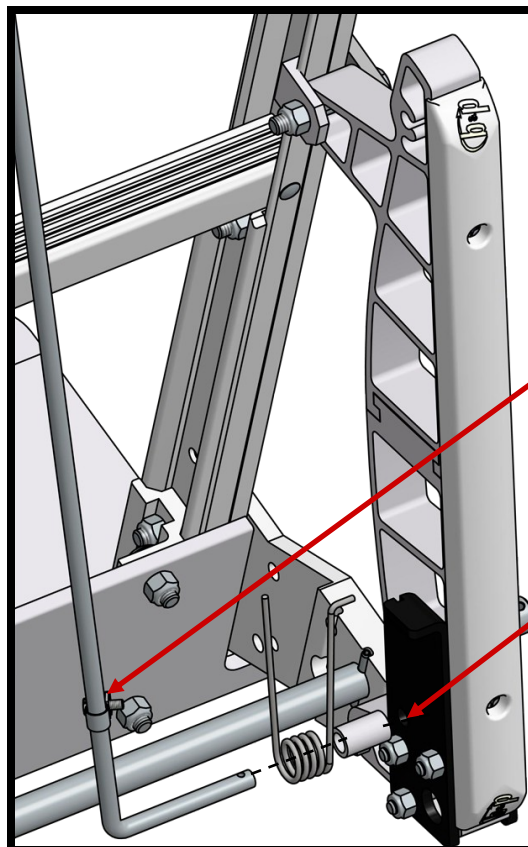
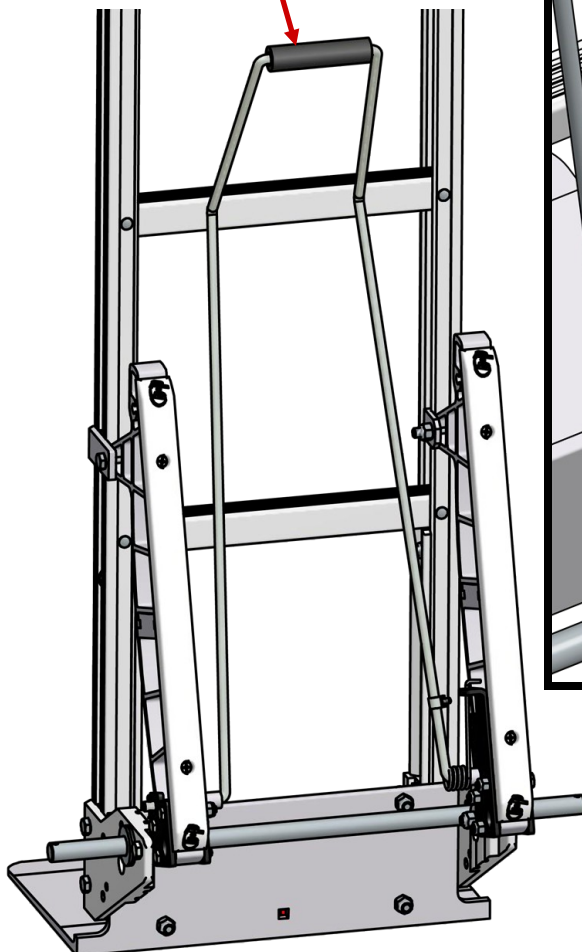
b&p Manufacturing
Engineered Delivery Products

Pull Bar Assembly Instructions

1. To add a pull bar to your hand truck with E1L stair climbers first remove both wheels and set aside.
2. Place one kick bar bracket (A) on each side of the left stair climber, oriented as shown, and secure with bolts (G) and lock nuts (H).
3. Place a kick bar bracket (A) on the outside and the spring bracket (B) on the inside of the right stair climber, oriented as shown, and secure with bolts (G) and lock nuts (H).



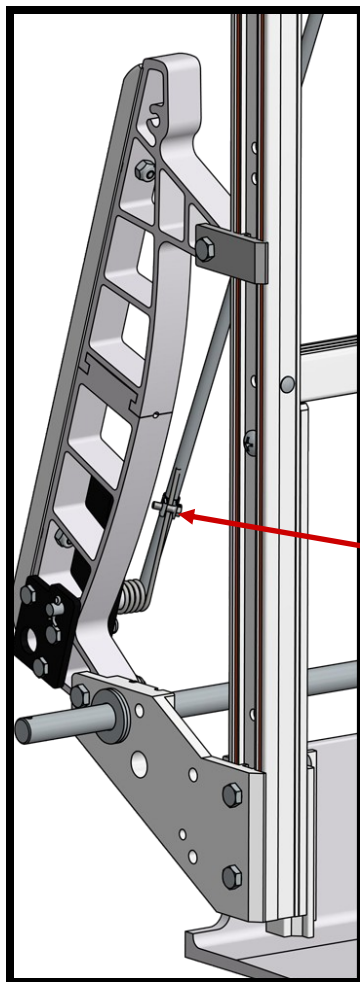
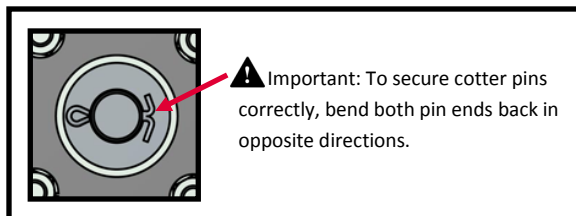
Orient handle as shown, resting against the frame



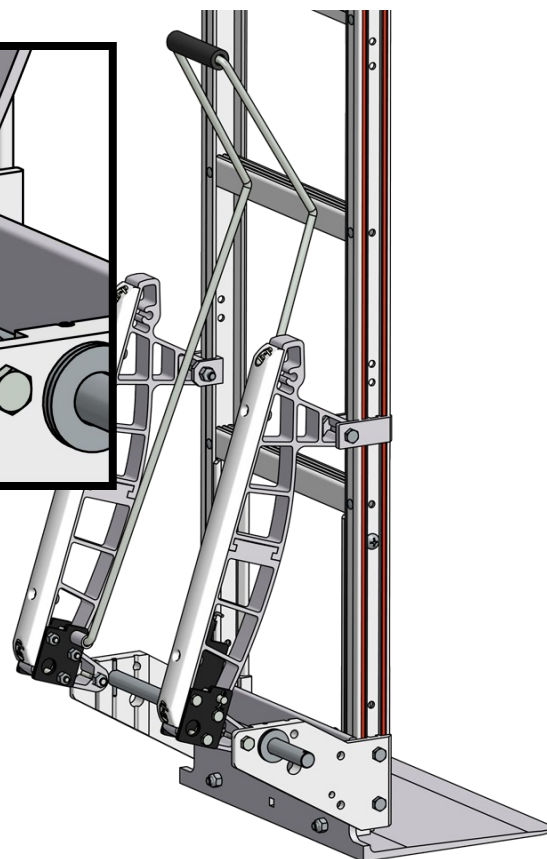
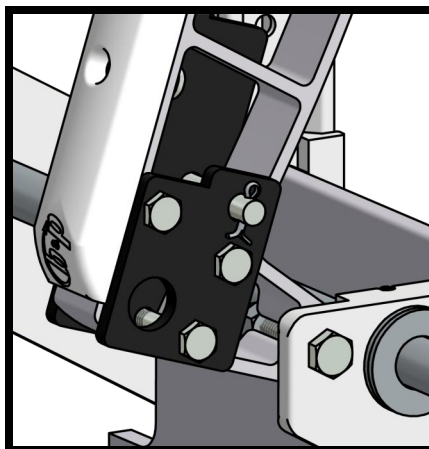
4. Take the pull bar and orient as shown. Slide clamp (F) on to the right side of the pull bar for later use. Then slide one spacer (D) and spring (E) onto the right side of the pull bar and one spacer (D) onto the left side. Compress the pull bar so the ends slide into the holes in each bracket.

Pull Bar Assembly Instructions

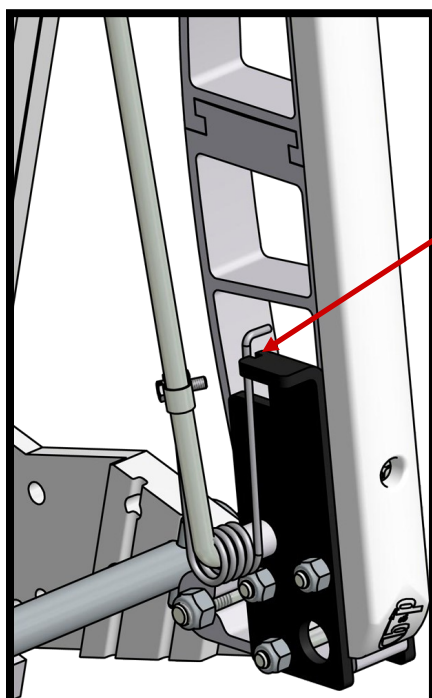
5. Secure both ends of the pull bar with cotter pins (I).
6. Next slide the clamp (F) over the straight spring leg and secure to the pull bar.



Clamp spring to pull bar



Latch spring into bracket cutout



7. Lastly pull the bent spring leg back to latch in the cutout in the spring bracket (B) attached to the stair climber.
8. Reattach wheels.